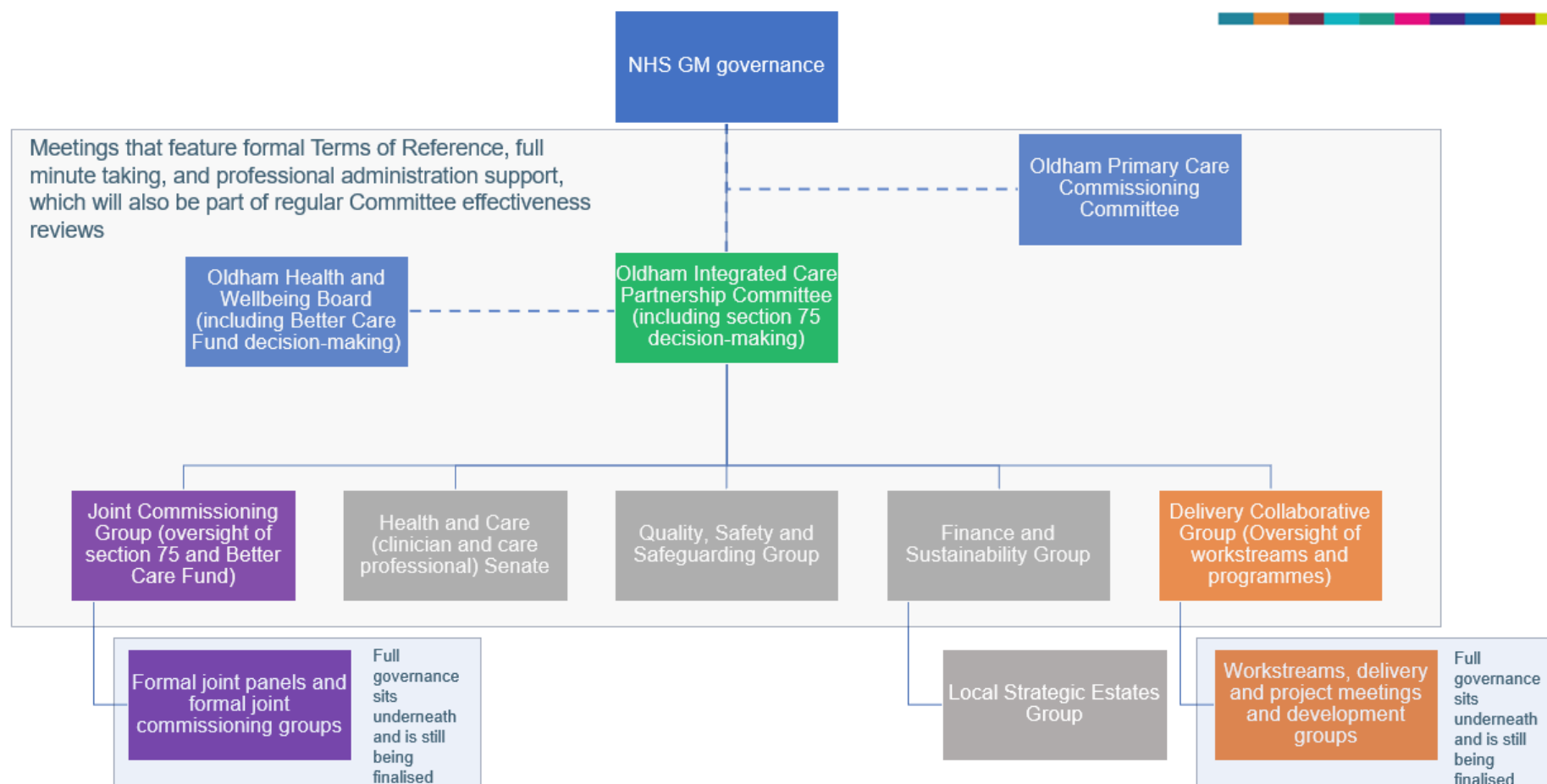


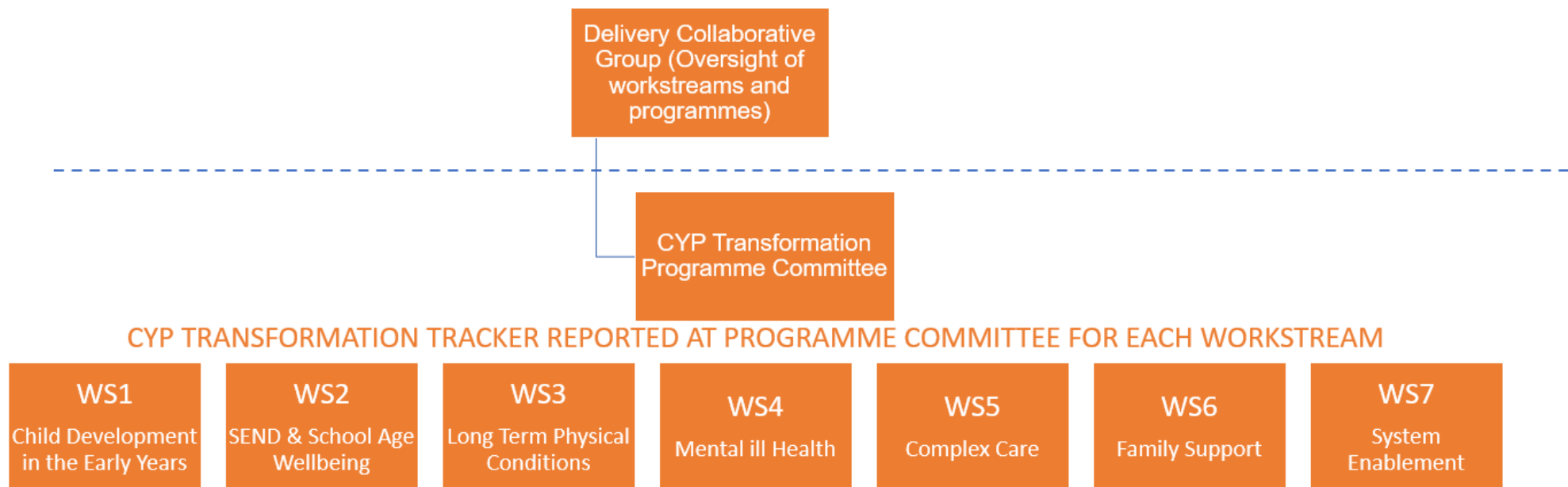
Locality Governance structure and resourcing



The following pages detail the governance arrangements for the Oldham Locality, part of the Greater Manchester Integrated Care Board. The Oldham Integrated Care Partnership brings together partner agencies to agree strategic priorities, commissioning and funding arrangements.

This first page shows the relevant decision making boards within the partnership, and these include the ICP Committee which is the overall decision making body whose responsibilities include oversight of our Section 75 agreements, the Better Care Fund as well as any required commissioning or funding changes or proposals. The governance structure also includes relevant Joint Commissioning Groups as well as Quality Assurance and the Clinical Health and Care Senate. We have made improvements to these structures over the last year, and we now work seamlessly within the wider GM governance system. Where contracts are held at a GM level, the locality has an ability to shape and influence or to challenge performance as a result.

Children and Young People's Governance structure and resourcing (locality)



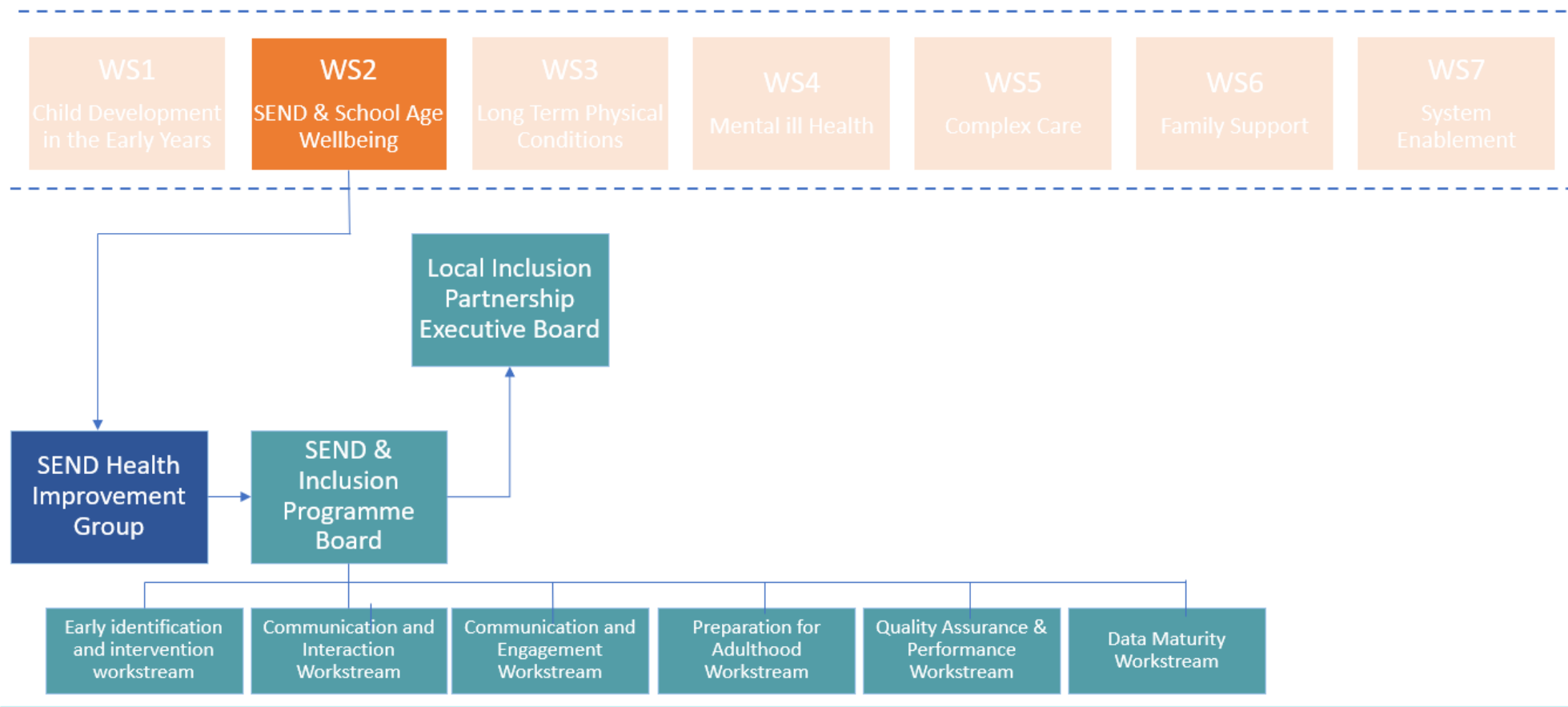
Some of the workstreams will require new formal meetings being established but the vast majority can utilise existing forums and meetings to ensure the identified actions are taken forward in a multi-disciplinary way. Further work is required to develop the overall tracker and actions within it with our provider colleagues who will have their own delivery plans to be incorporated.

The next 2 pages show the relevant decision making boards within the partnership, and these include the ICP Committee which is the overall decision making body whose responsibilities include oversight of our Section 75 agreements, the Better Care Fund as well as any required commissioning or funding changes or proposals. The governance structure also includes relevant Joint Commissioning Groups as well as Quality Assurance and the Clinical Health and Care Senate. We have made improvements to these structures over the last year, and we now work seamlessly within the wider GM governance system. Where contracts are held at a GM level, the locality has an ability to shape and influence or to challenge performance as a result.

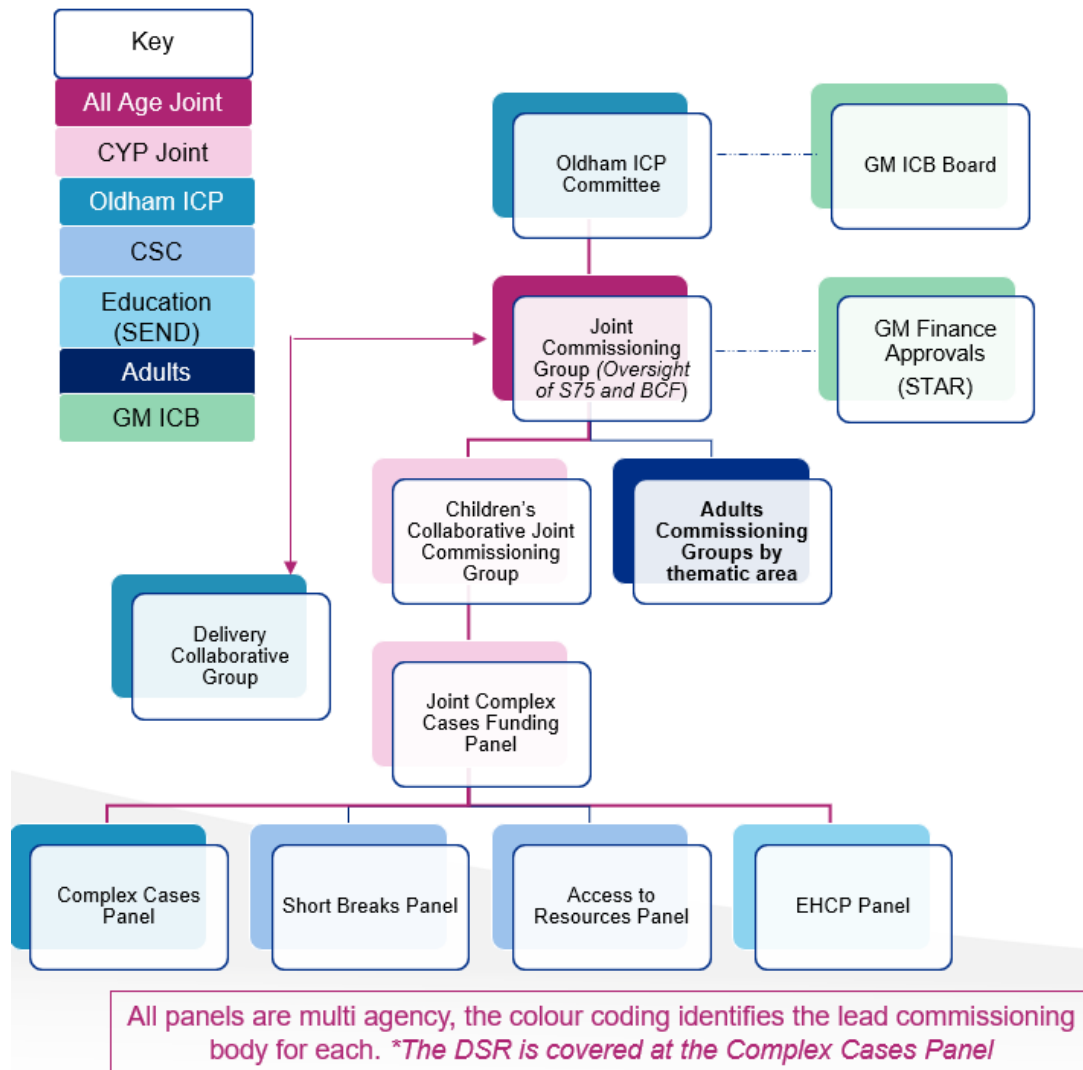
Children and Young People's Governance structure and resourcing (locality)

Oldham

Integrated Care Partnership



Oldham Children's Joint Commissioning Governance



Children's Collaborative Joint Commissioning Group

Focus of Children's Joint Commissioning Group

- Outcomes and Performance Framework
- POINT feedback and consultations
- Oldham Children in Care Council feedback
- Special School Place Sufficiency / Increases
- School Nursing provision
- High Needs Capital Funds and expansion of specialist provision
- Social Care Demand & Placements
- Transitions Placements
- Fostering Demand & Placements
- Early Help and Prevention
- Early Years Sufficiency
- Health provision and services (inc. CAMHS)
- Continuing Health Care
- Joint Funding Packages analysis
- Joint funded contracts and services
- Annual Budget Disclosures and Joint Planning
- CIP Schemes and Savings Programmes
- Section 75 Agreement and CYP services within

GM ICB processes will be followed in line with the scheme of delegation. Where commissioning duties are within locality then the Oldham ICP committee will be the decision making body and NHS GM ICB finance approvals followed before submission at Committee. The GM ICB CYP Commissioning Oversight Group will be consulted, and reports discussed for consistency and alignment purposes only.

Our CYP Joint Commissioning arrangements and governance are detailed on this page. This has been a real success story over the 2024/25 year with key improvements to joint strategic planning for commissioned services, a joint contracts register and a really engaging and robust CYP Joint Commissioning group that has affected meaningful change and an increase to our jointly commissioned contracts and services. We better plan and better understand each others funding and financial positions as a result of the new governance arrangements. All of the joint commissioning activity is underpinned by standard agenda item updates from Children and Young People and the Parent Carer Forum as well as a deep dive into data and intelligence driven by our SEND Joint Strategic Needs Assessment and local and GM SEND Dashboards.



This page illustrates the governance structure and responsibilities within the Oldham SEND Partnership, including top level governance (LIP Exec Board), Mid-level oversight (SEND & Inclusion Programme Board) and the operational workstreams that report to the programme board.