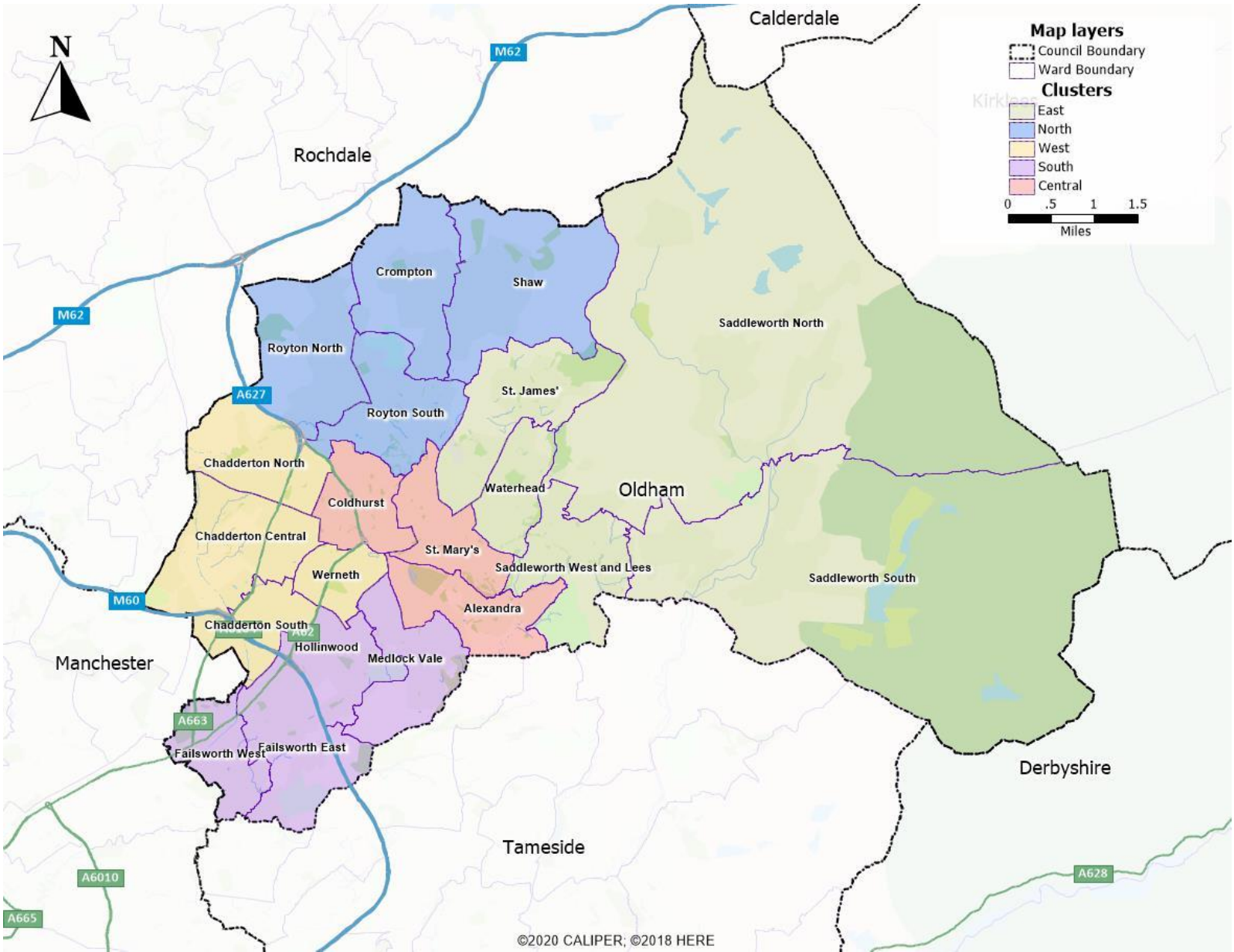
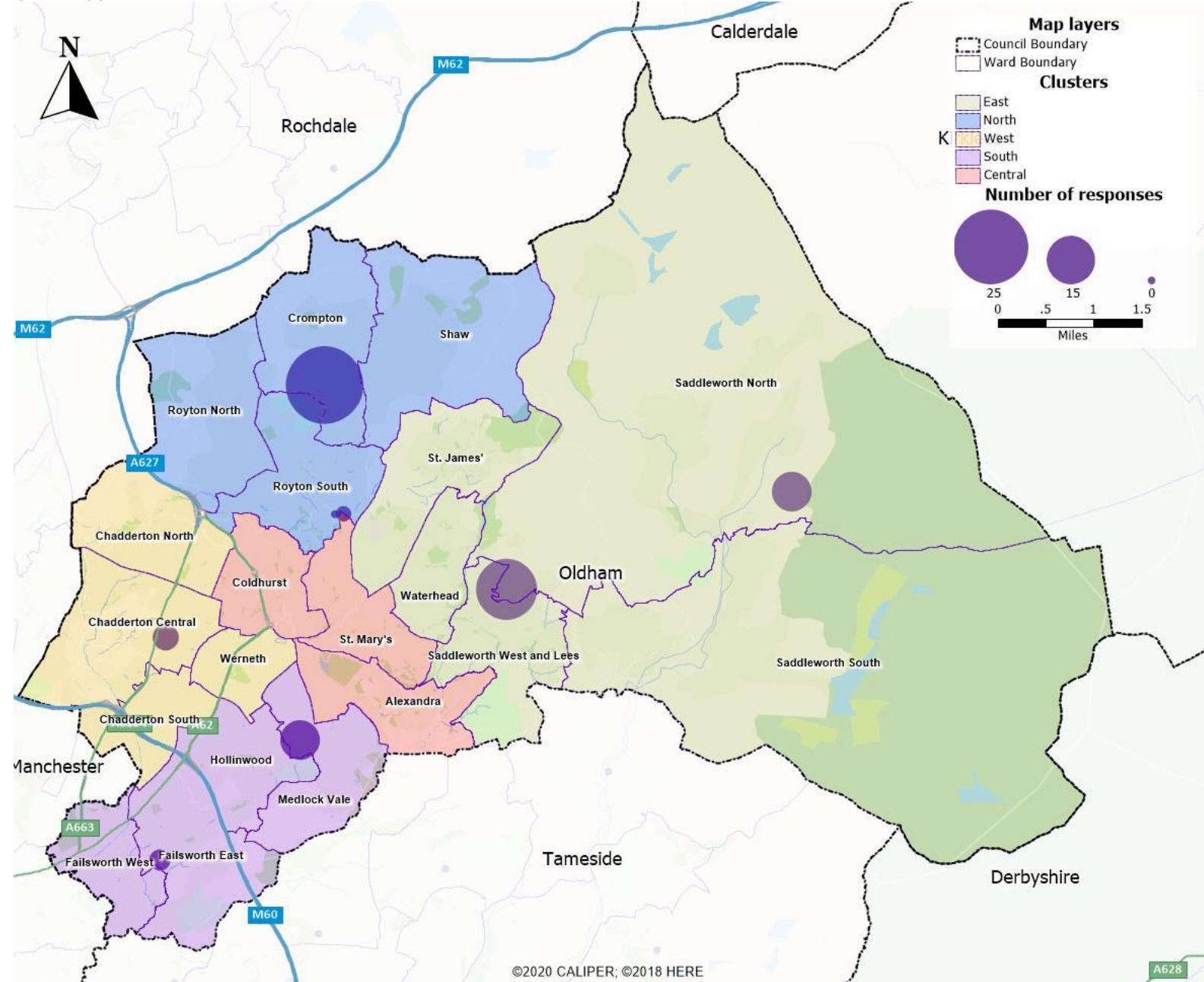


# Appendix Ten – Maps

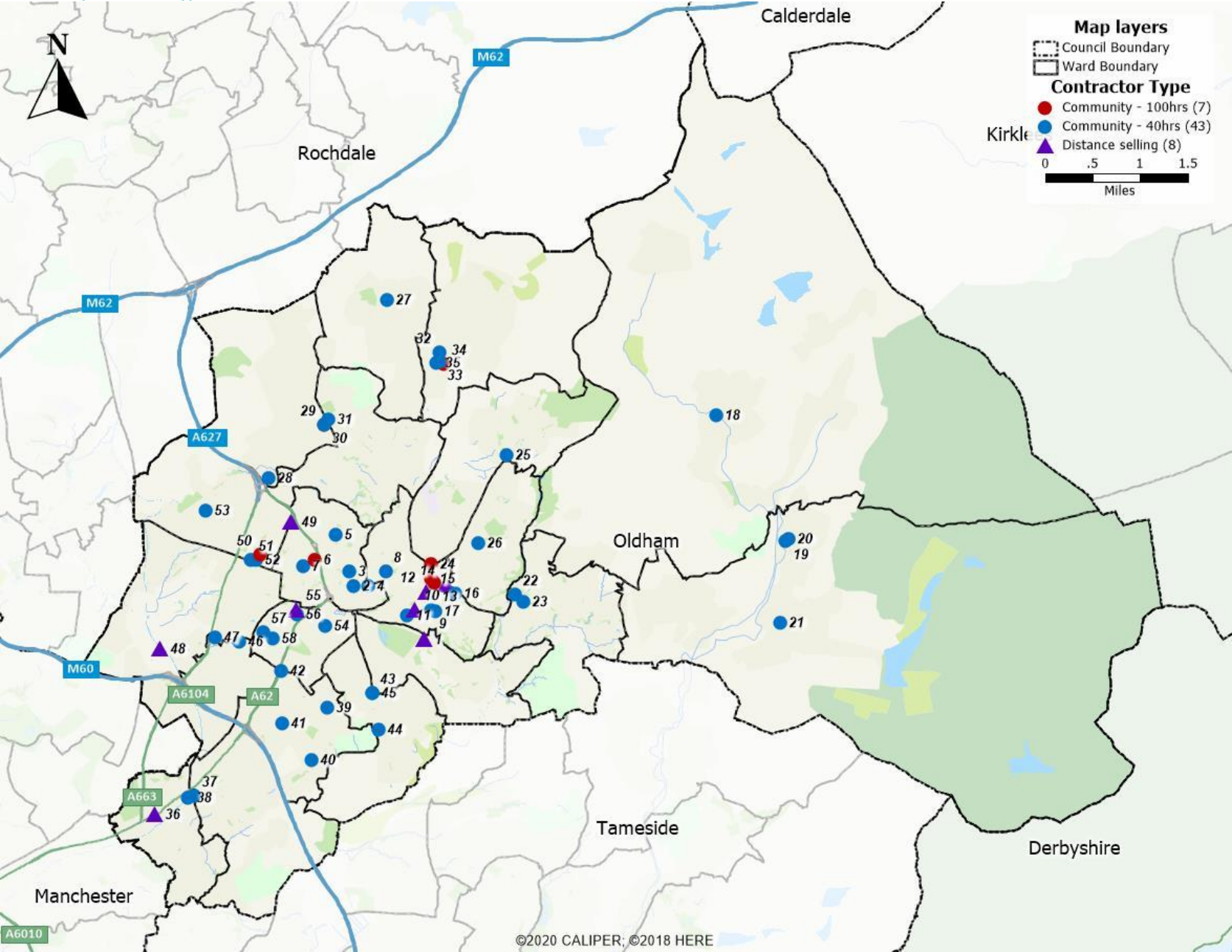
Map 1 - Oldham clusters and wards



Map 2 - Public survey responses by postcode district

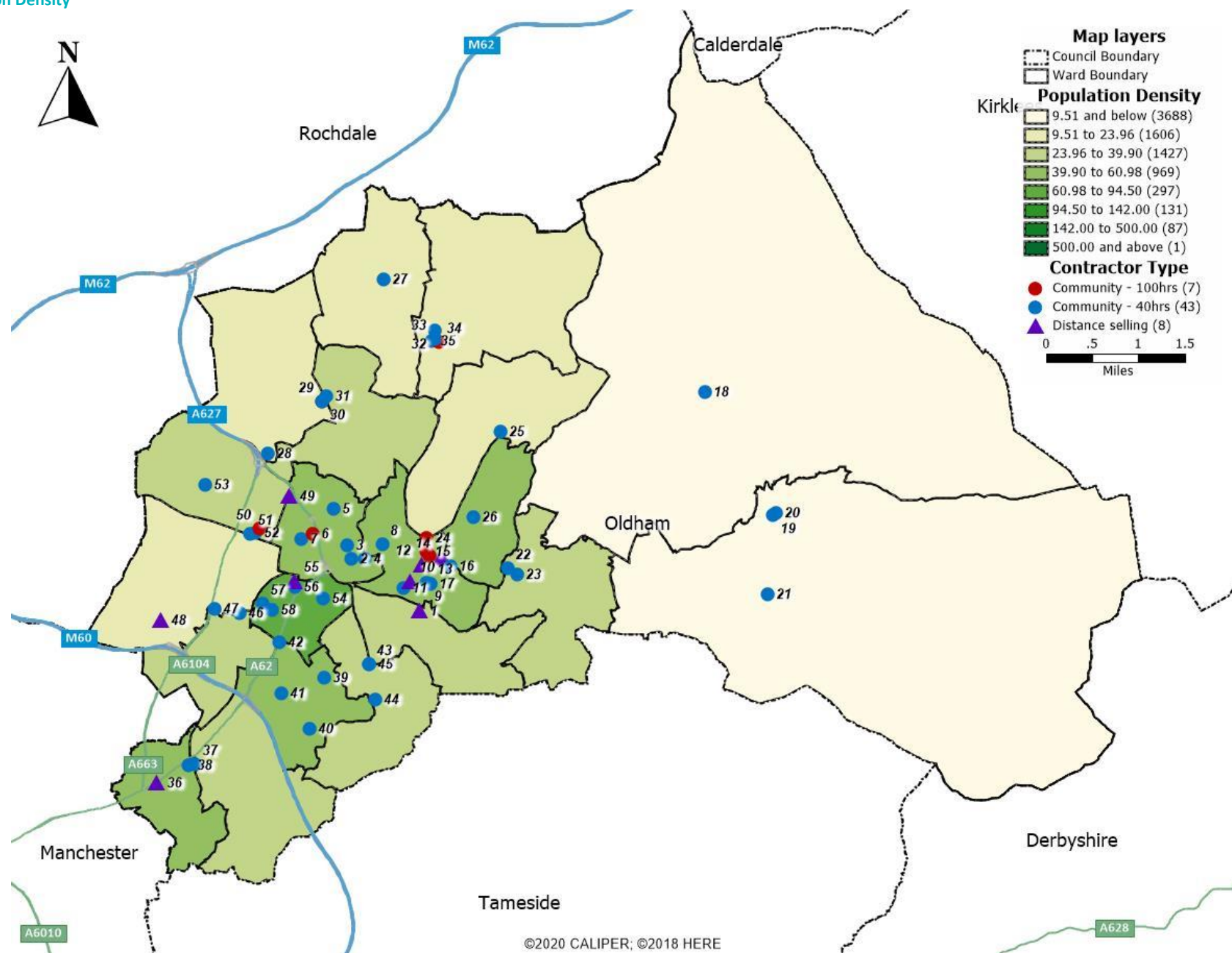


Map 3 - Oldham pharmacies by contractor type

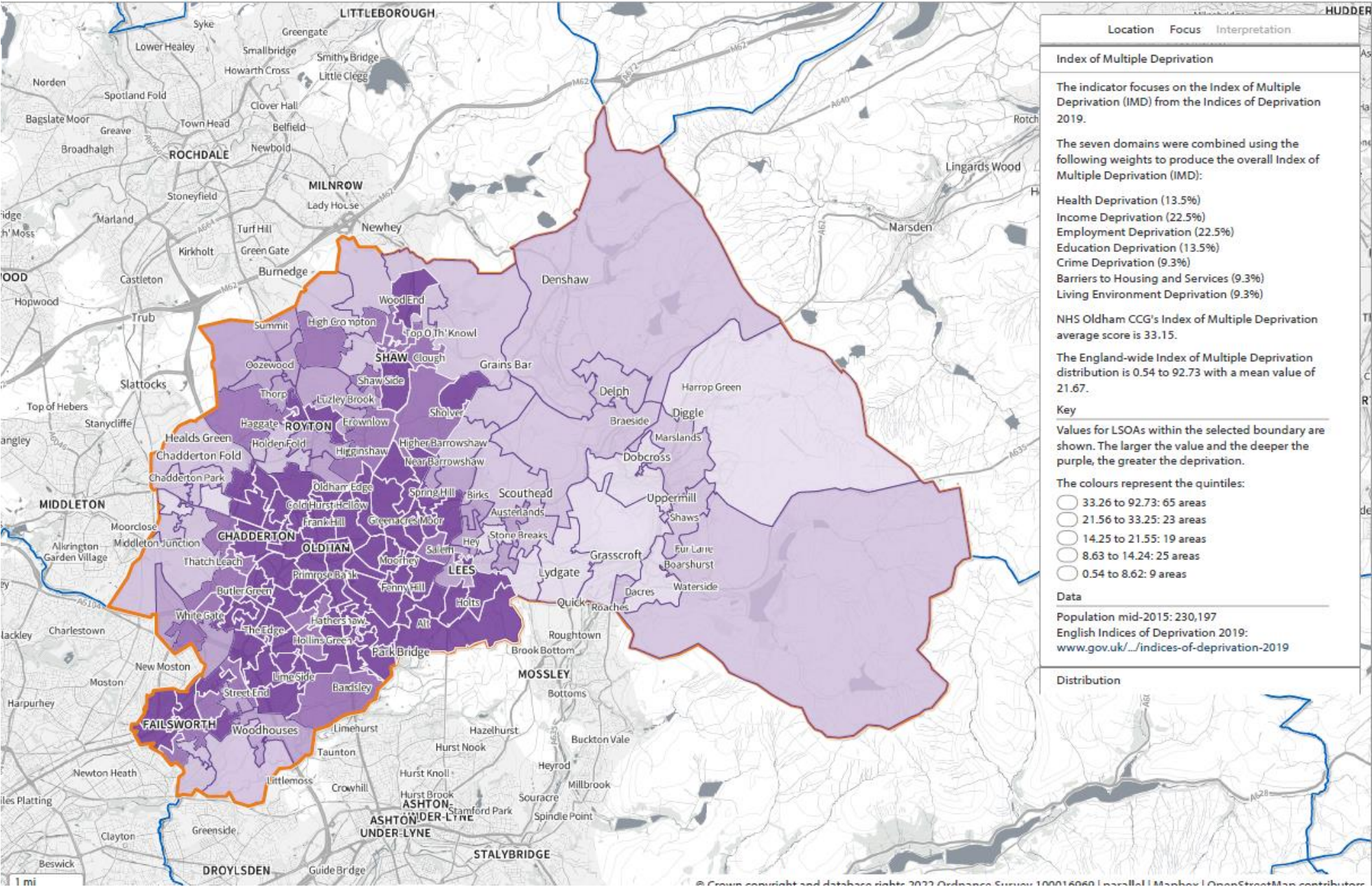




Map 4 - Population Density



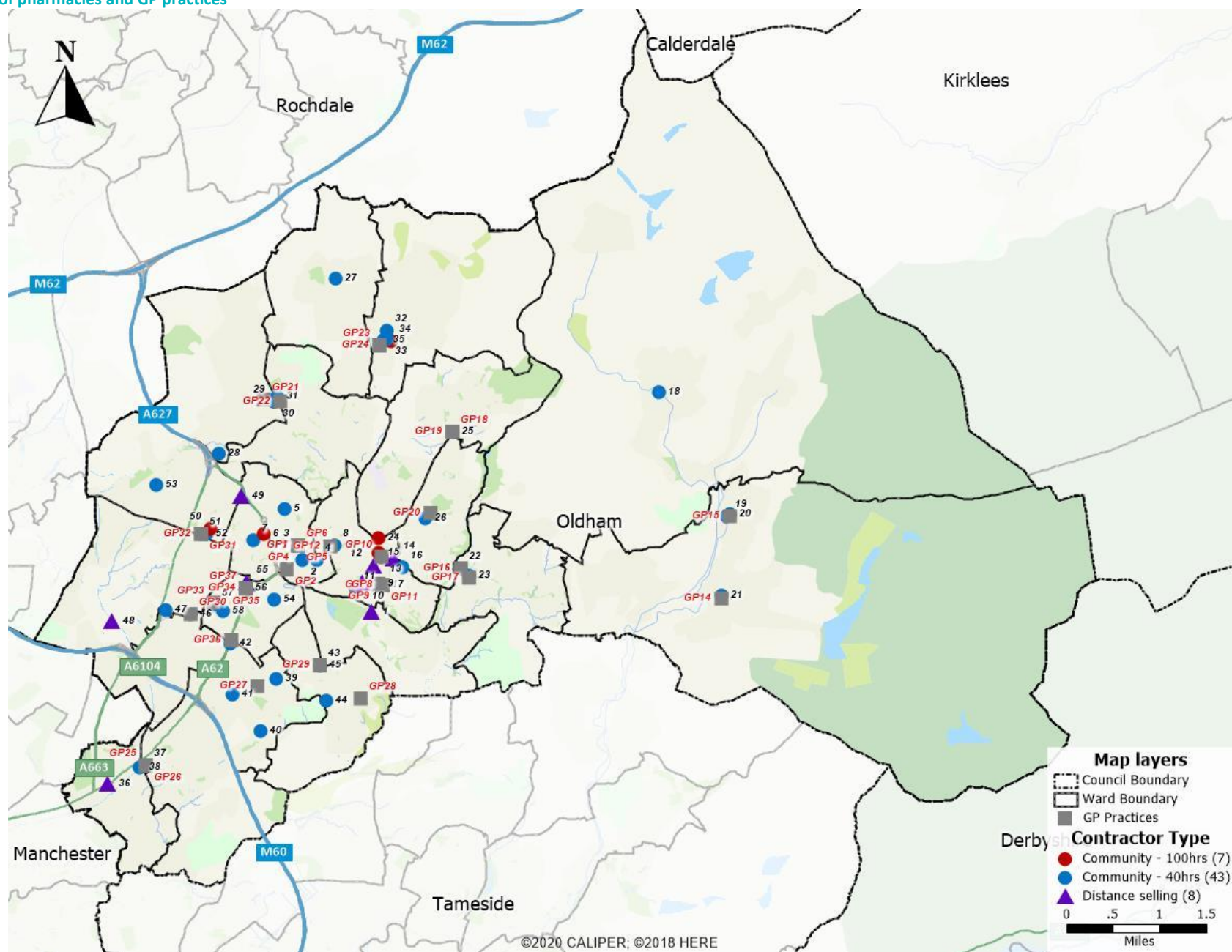
Map 5 - IMD 2019 by LSOA



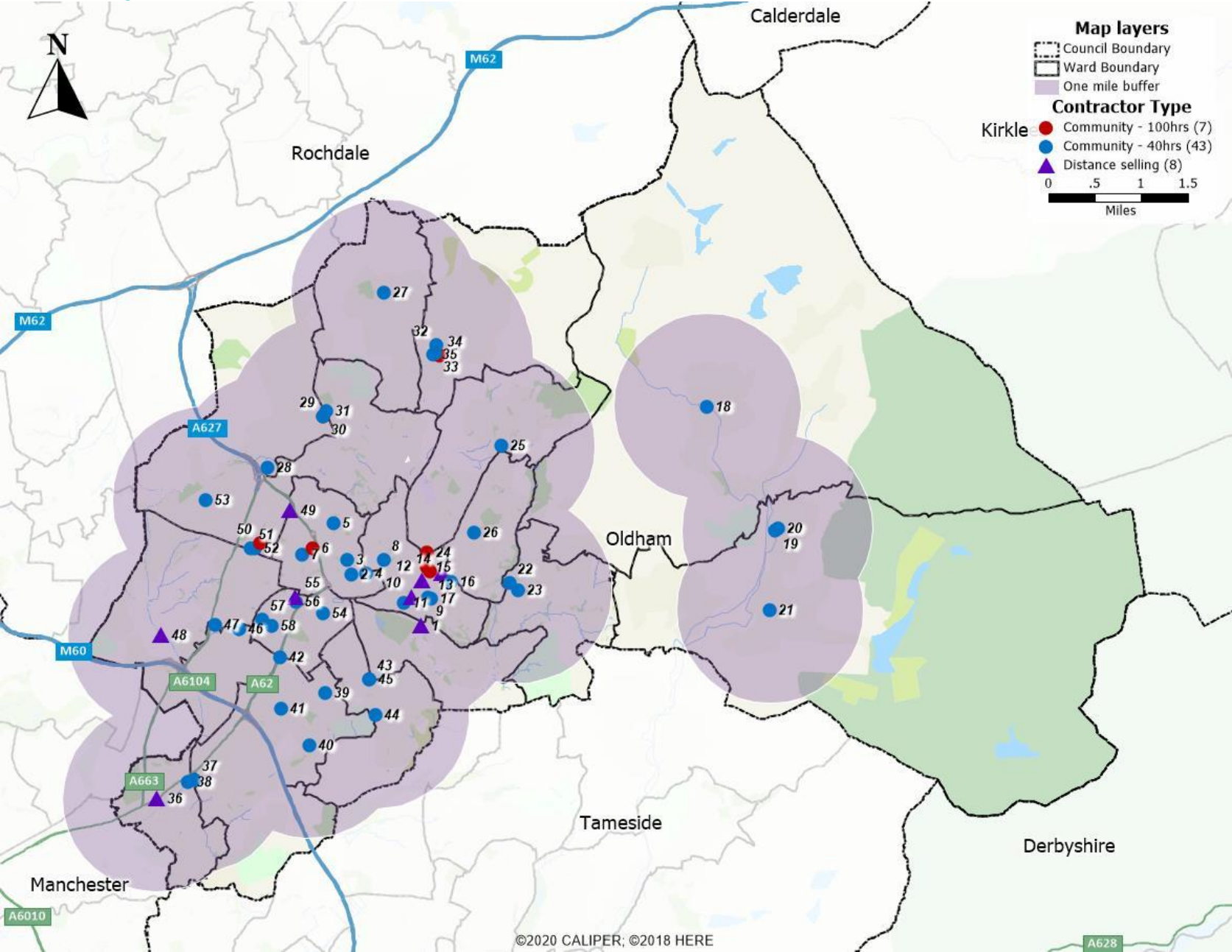
© Crown copyright and database rights 2022 Ordnance Survey 100016360 | Esri | Mapbox | OpenStreetMap contributors



Map 6 - Location of pharmacies and GP practices

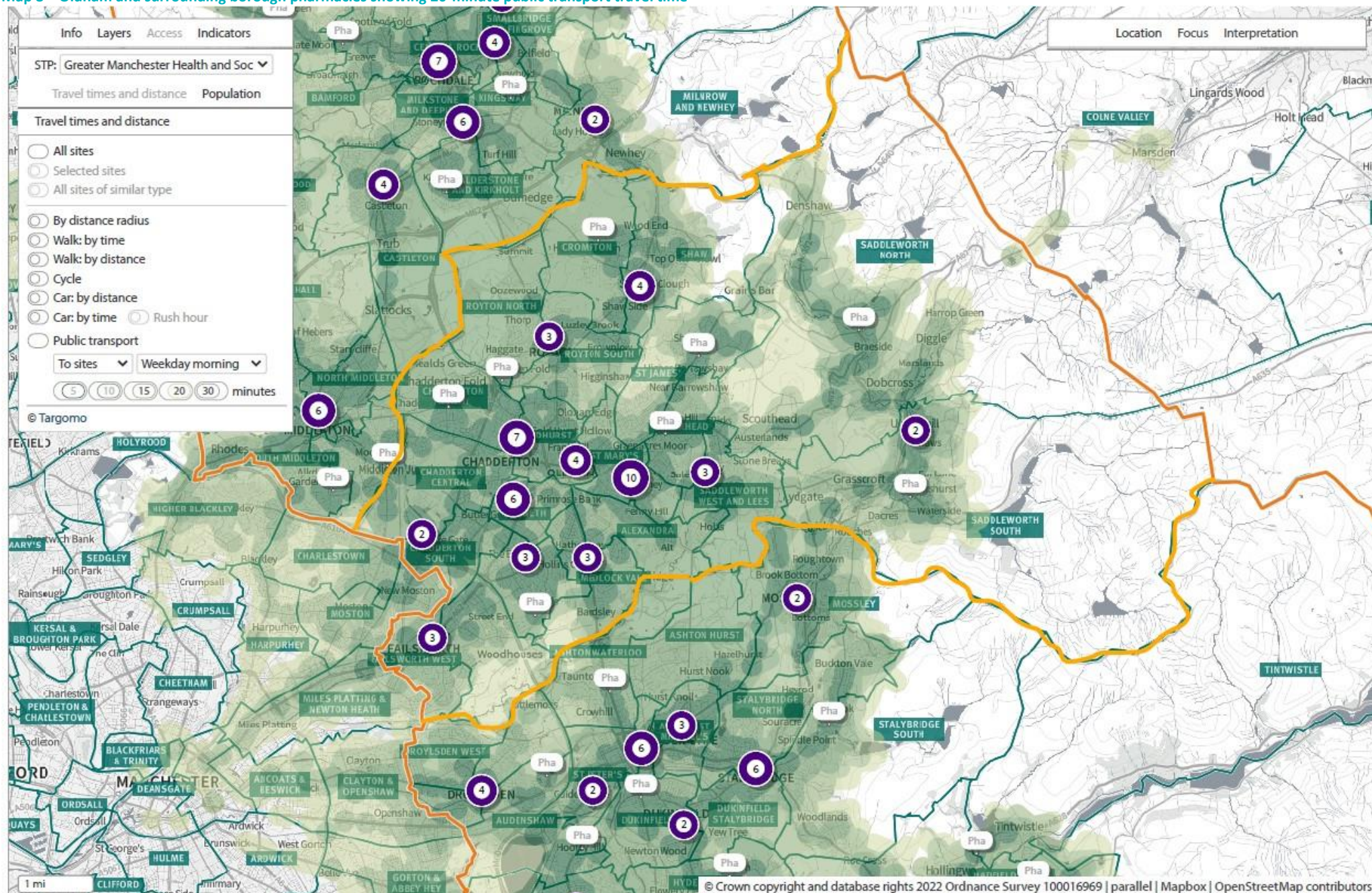


Map 7 - Oldham pharmacies showing one mile travel distance



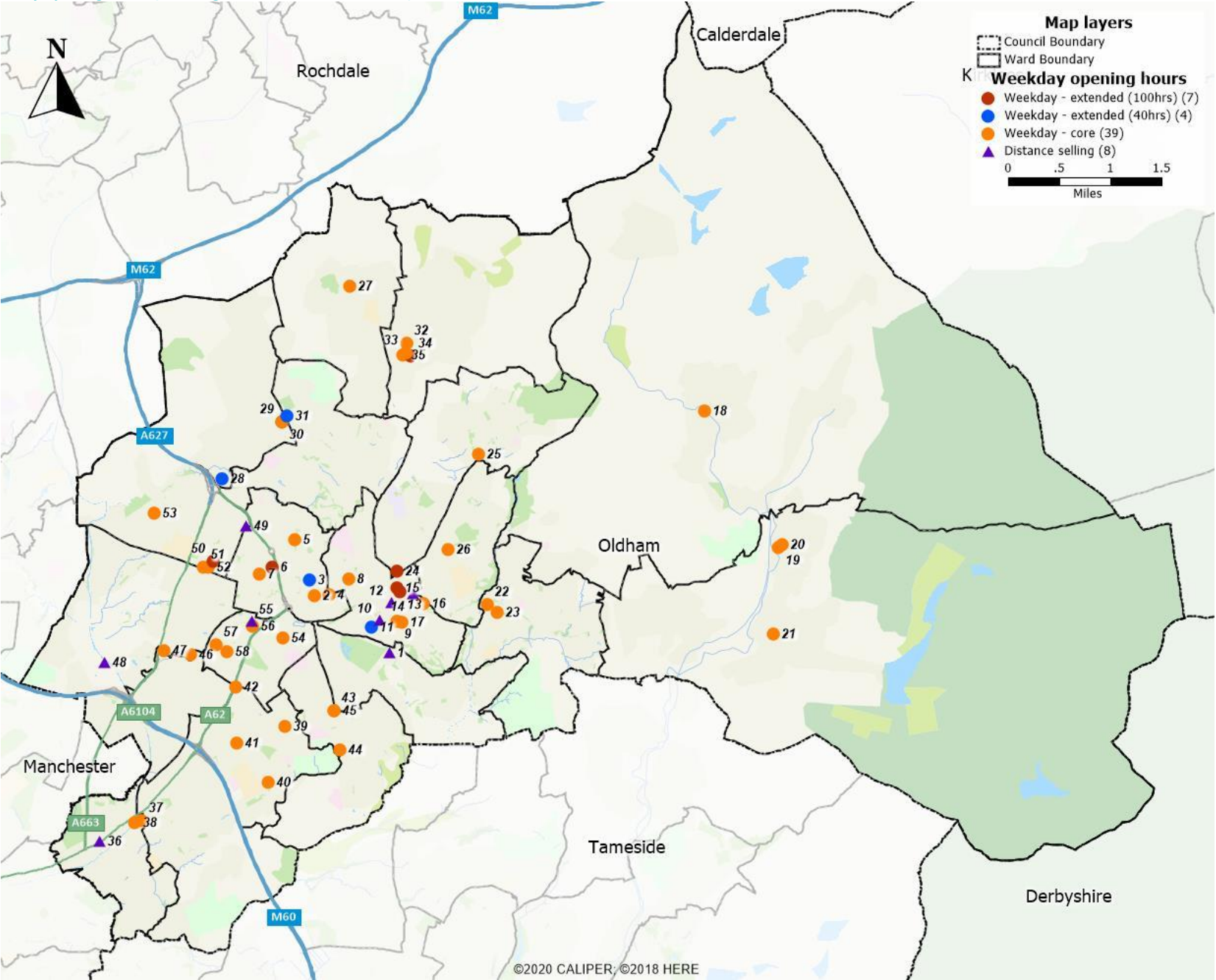


**Map 8 – Oldham and surrounding borough pharmacies showing 20-minute public transport travel time**

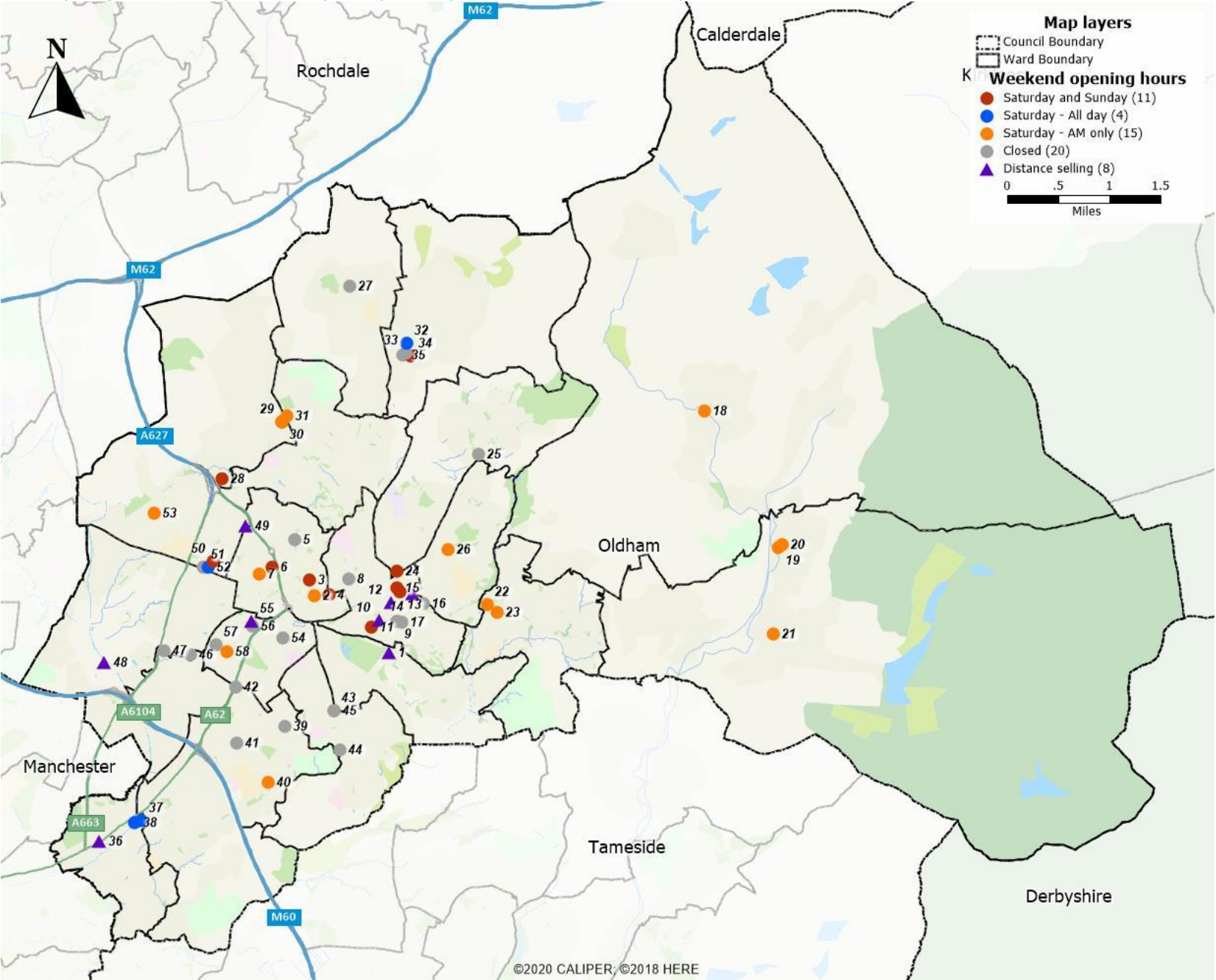




Map 9 - Oldham weekday opening hours (showing core and extended hours)

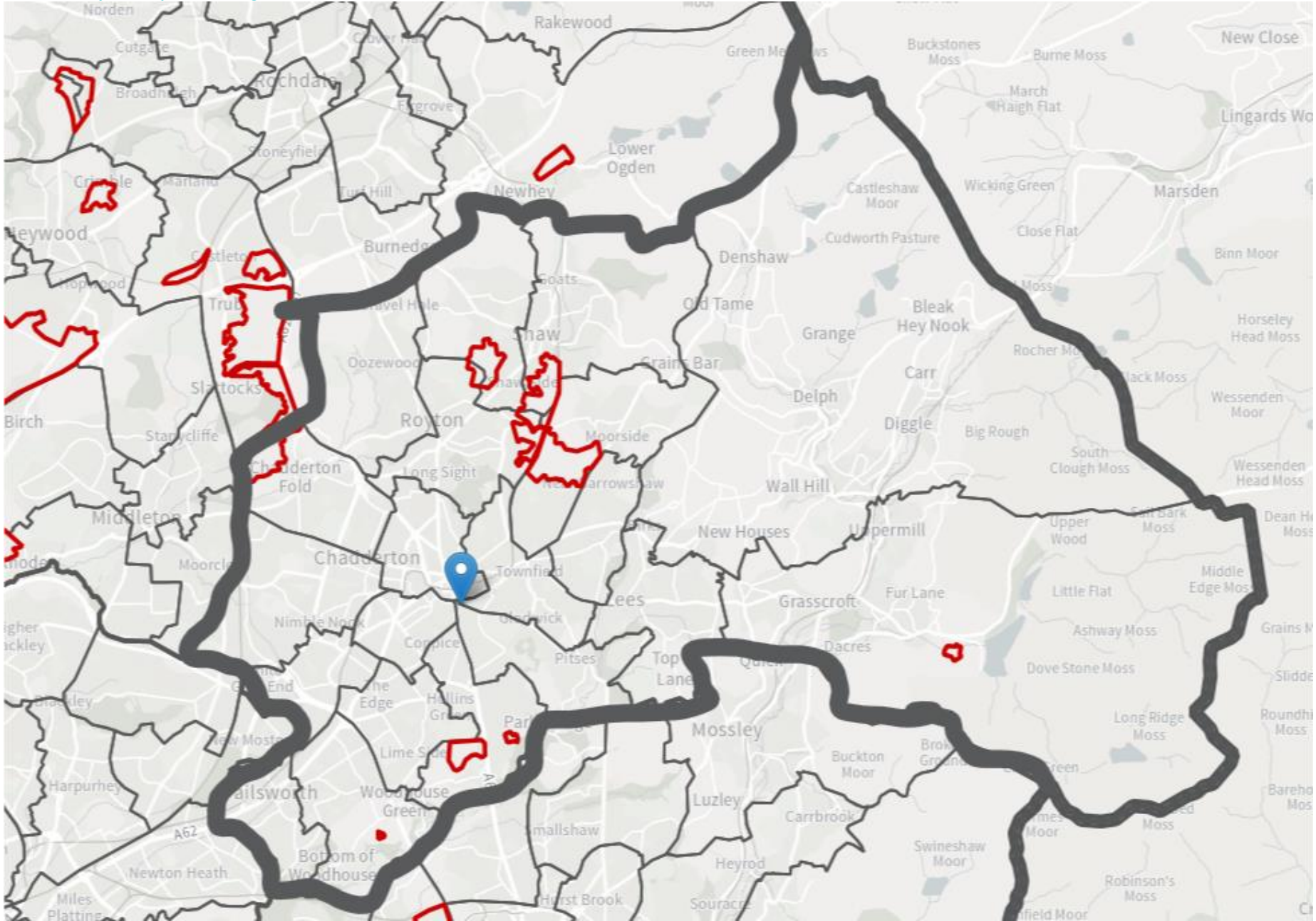


Map 10 - Oldham weekend opening hours (showing Sat a.m. only, all day Saturday and both Saturday and Sunday)

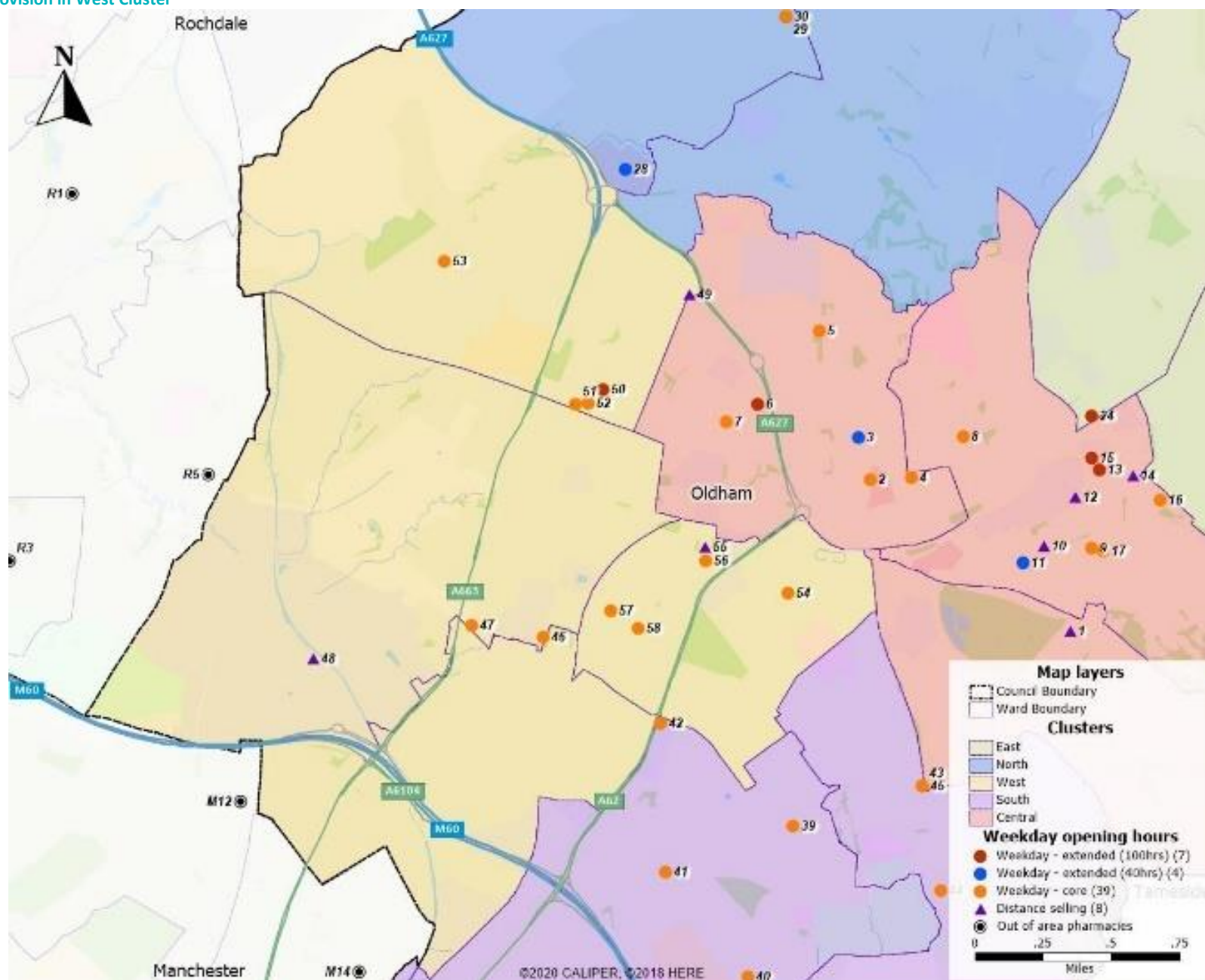




Map 11 - Places for Everyone Proposed Strategic Allocations

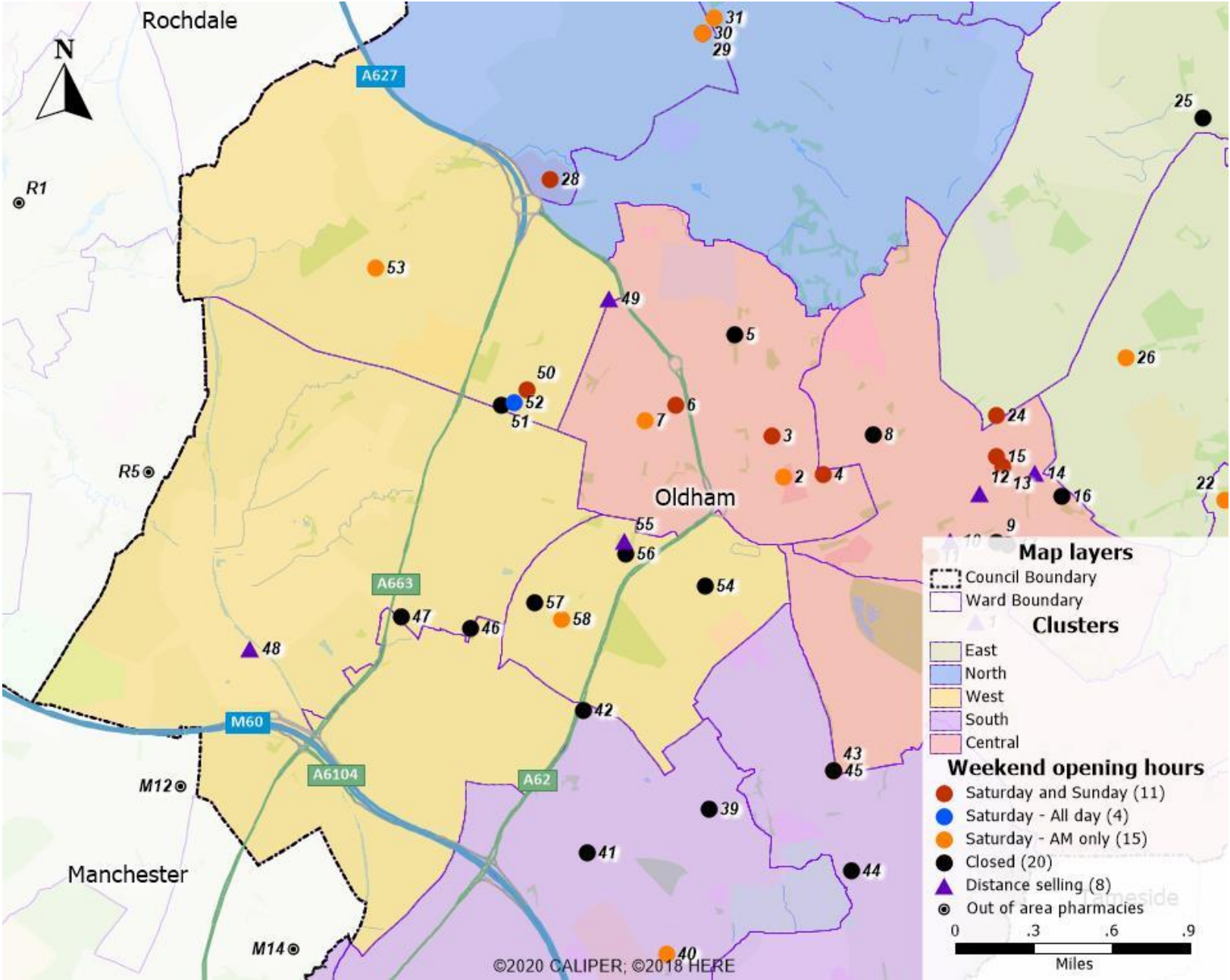


Map 12 - Weekday provision in West Cluster

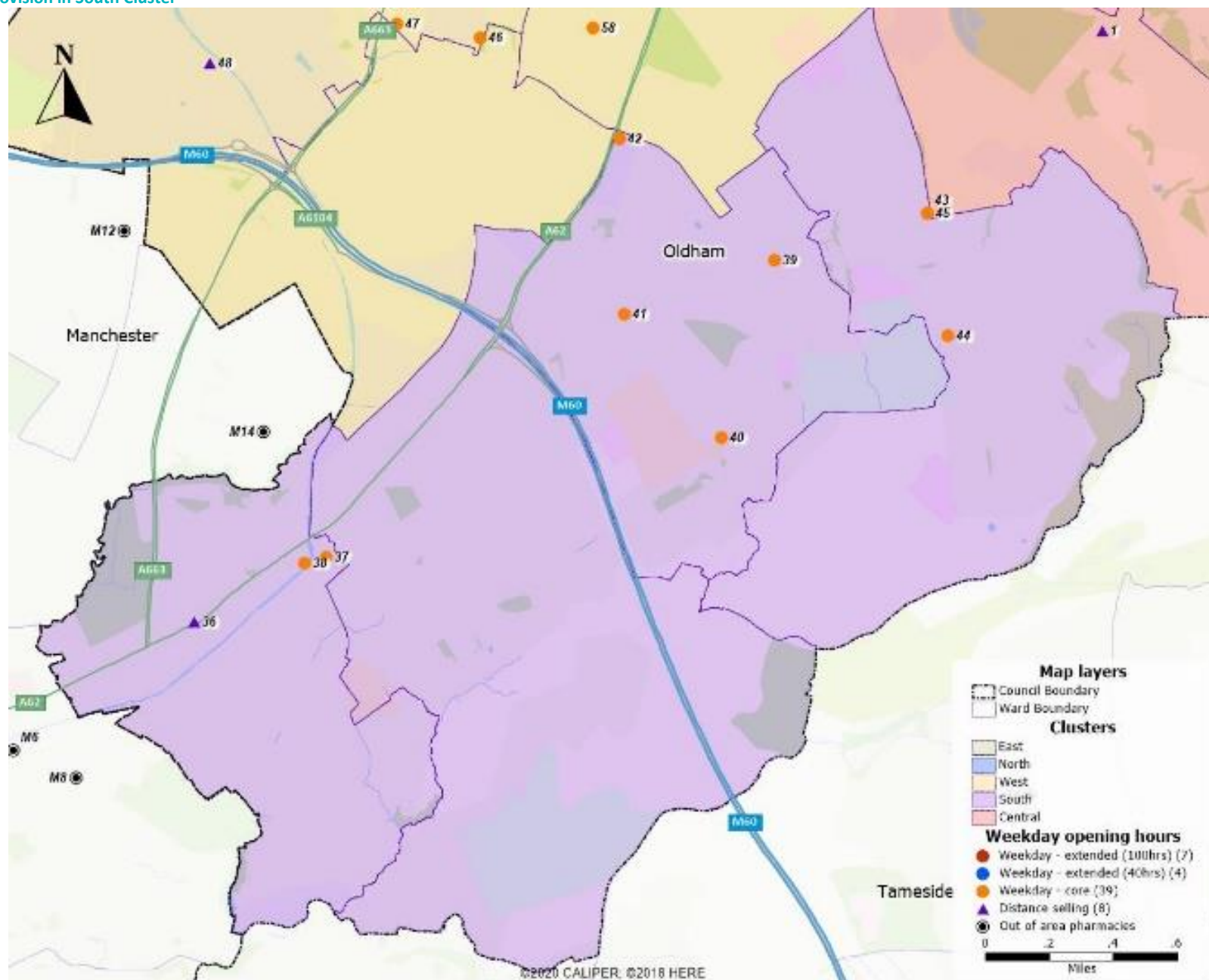




Map 13 - Weekend provision in West Cluster

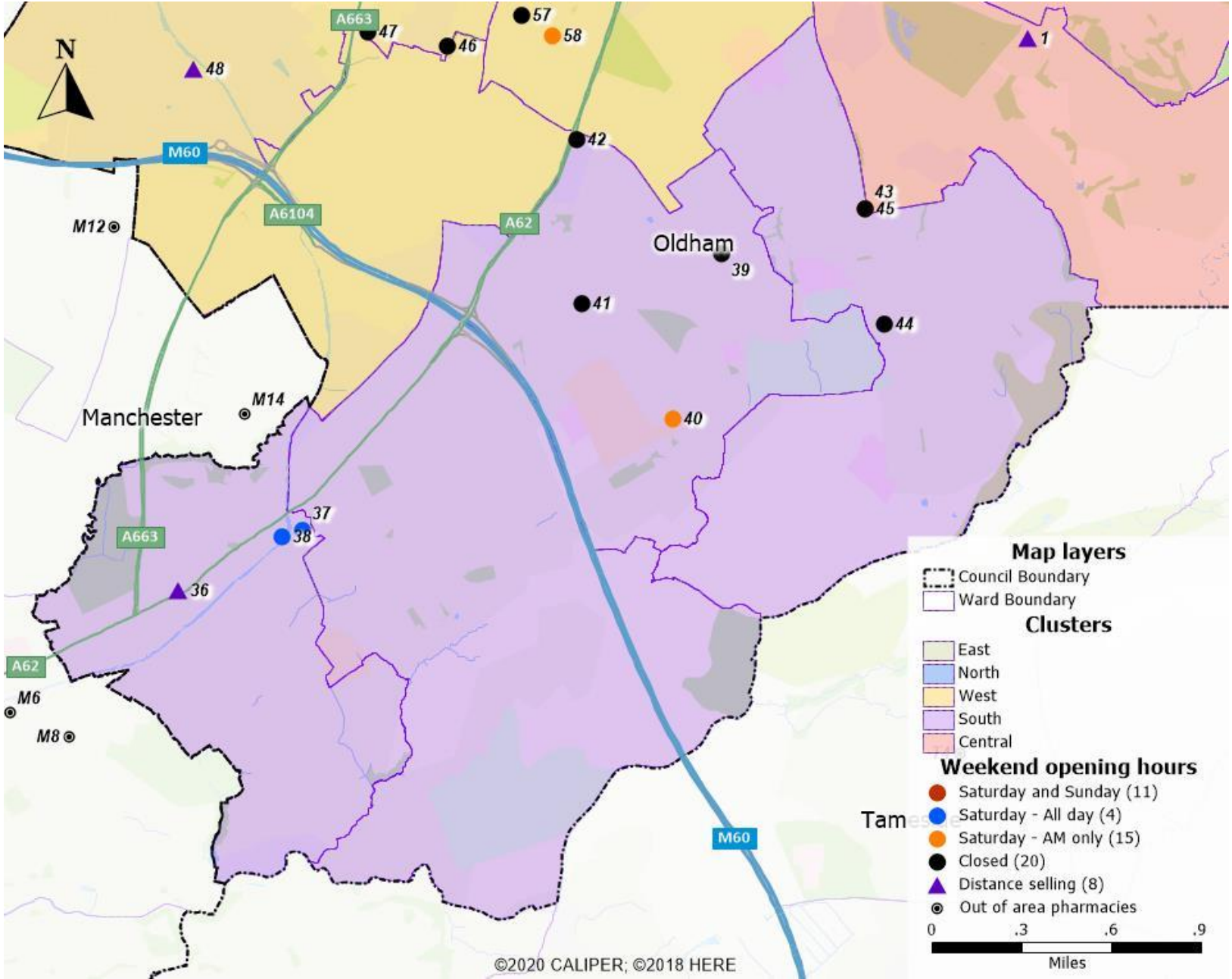


Map 14 - Weekday provision in South Cluster





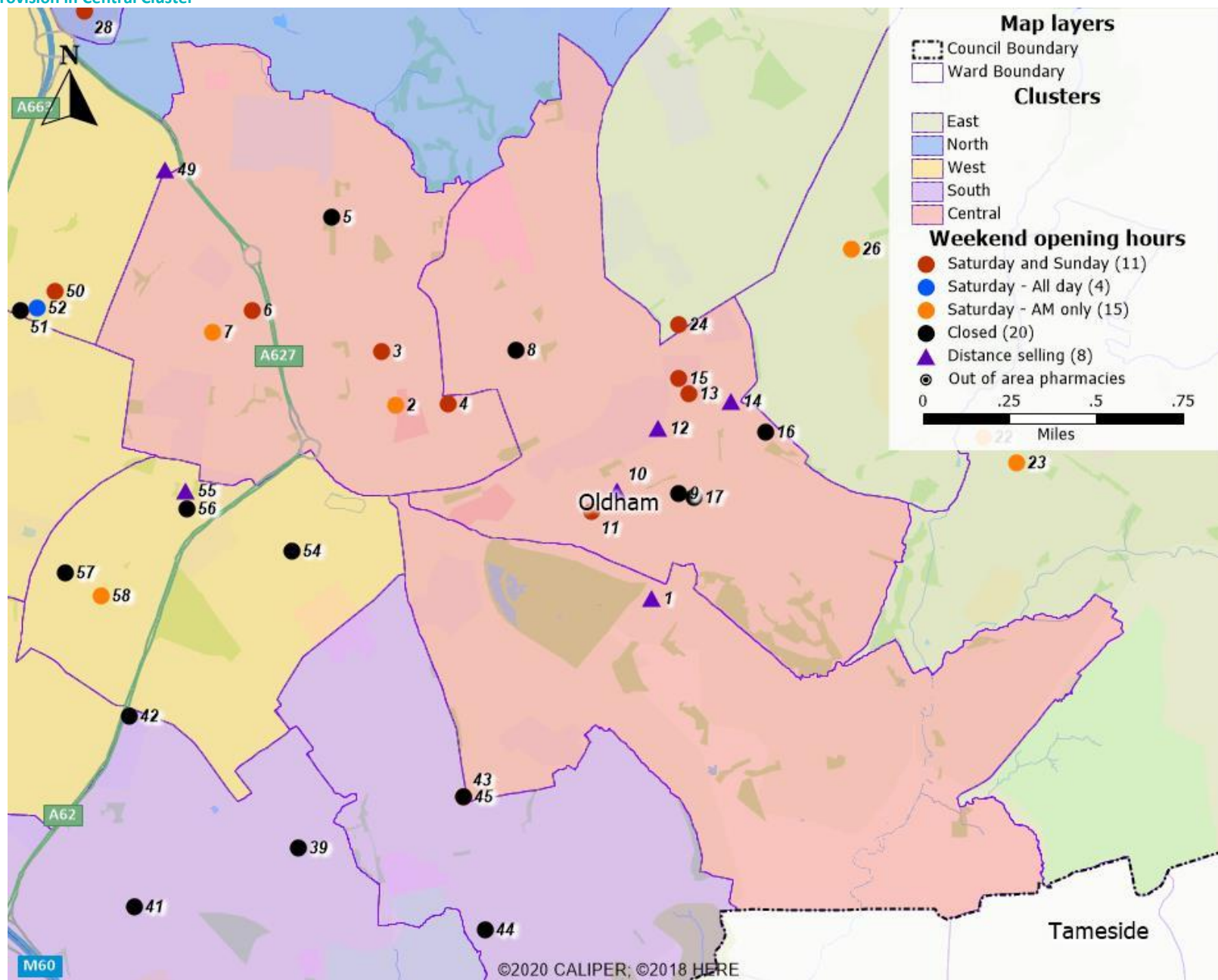
Map 15 - Weekend provision in South Cluster



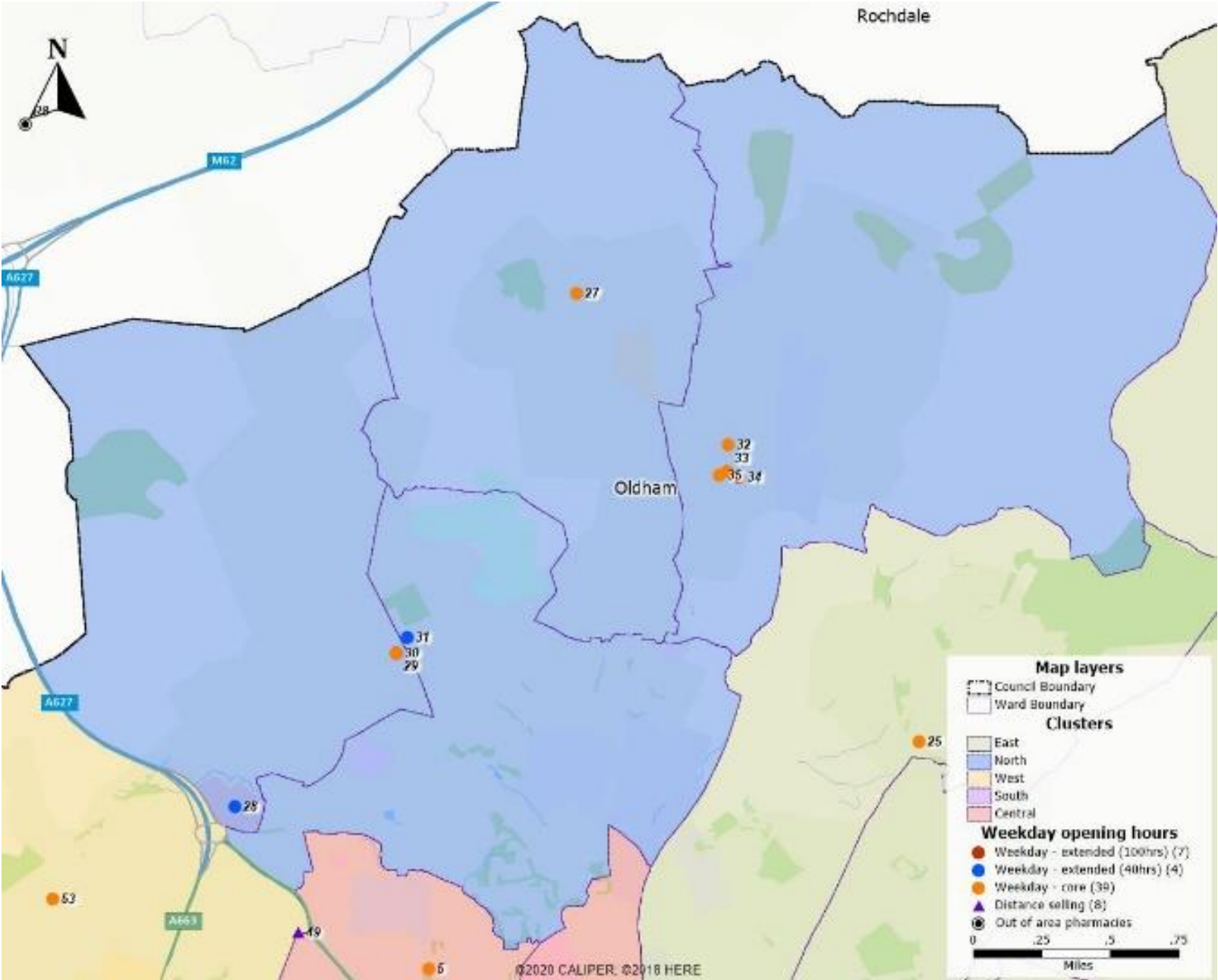




Map 17 - Weekend provision in Central Cluster

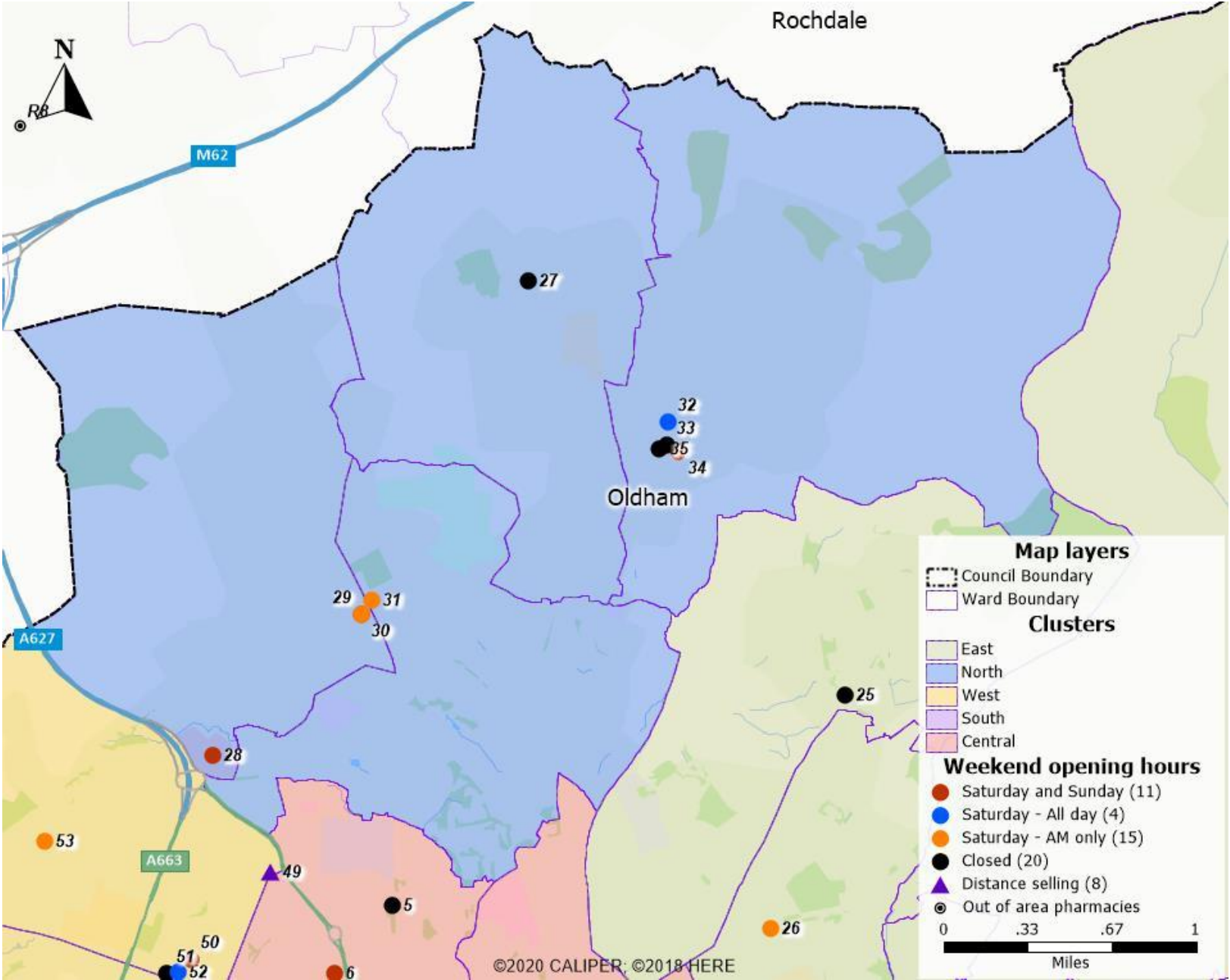


Map 18 - Weekday provision in North Cluster

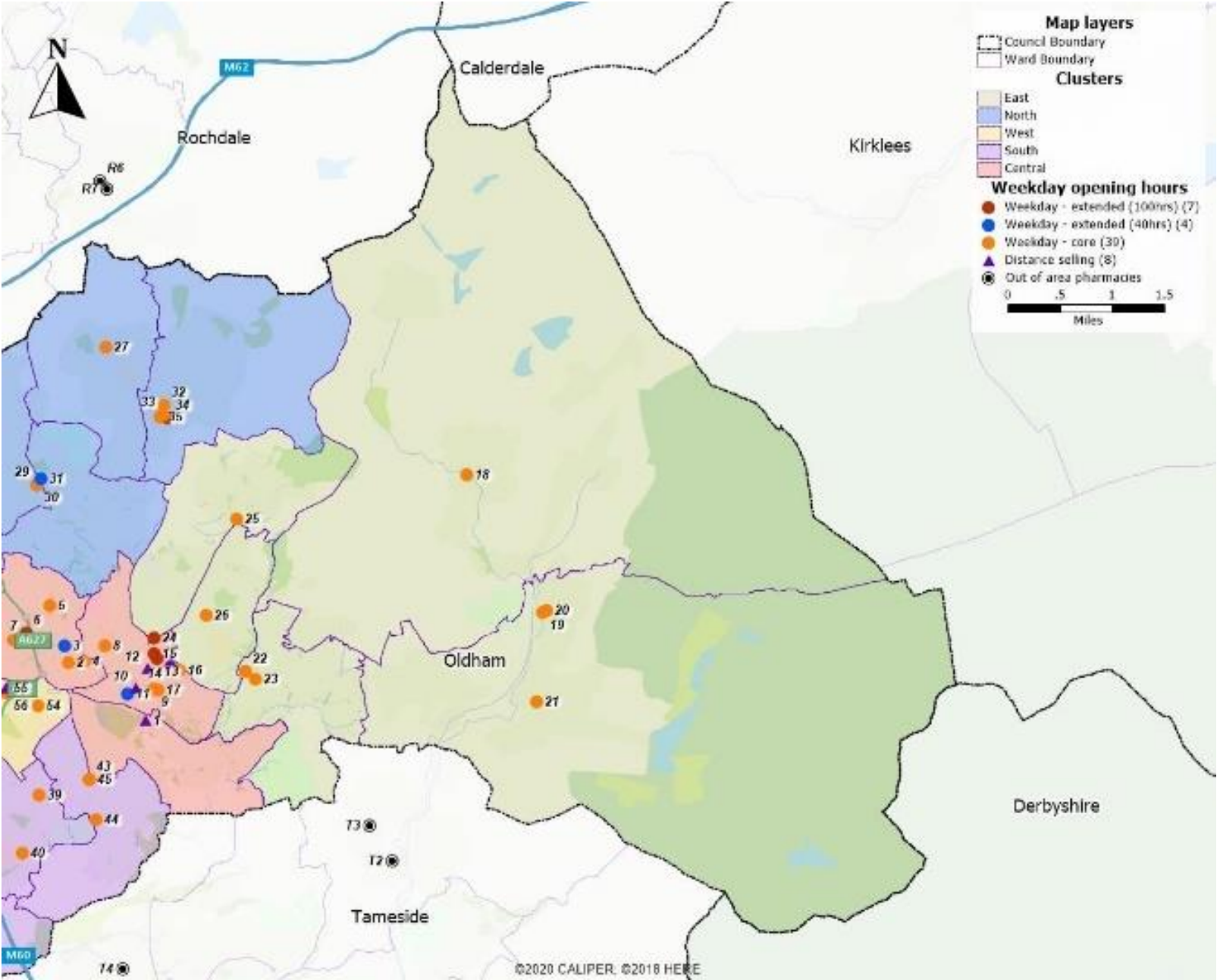




Map 19 - Weekend provision in North Cluster



Map 20 - Weekday provision in East Cluster





Map 21 - Weekend provision in East Cluster

