

Oldham

Local

Plan

Integrated Assessment of the Local Plan Review Issues and Options

July 2021



Oldham
Council

1	Non Technical Summary	2
2	Introduction	6
3	Purpose of a Integrated Assessment	8
4	Integrated Assessment Process	11
5	Appraisal of Issues and Options	13
6	Appraisal of Vision	15
7	Appraisal of Plan Objectives	24
8	Appraisal of Spatial Options	82
9	Appendix 1: Equalities Impact Assessment	135
10	Appendix 2: Health Impact Assessment	139
11	Summary of Habitat Regulations Assessment	156

1 Non Technical Summary

- 1.1 This report is the Integrated Assessment (IA) for the Local Plan review.
- 1.2 Oldham's Joint Core Strategy and Development Management Policies Development Plan Document (DPD) was adopted on 9 November 2011.
- 1.3 Since then work has started on Places for Everyone: A Joint Development Plan Document of nine Greater Manchester Districts (was Greater Manchester's Plan for Homes, Jobs and the Environment - the Greater Manchester Spatial Framework (GMSF)). Places for Everyone will provide the land for jobs and new homes across the nine districts and upon adoption, Places for Everyone will form part of the Local Plan for Oldham.
- 1.4 Principally, Places for Everyone will identify the housing numbers and employment floorspace needs and associated infrastructure requirements as well as identifying the key allocations and broad opportunity areas where this growth should be focussed.
- 1.5 Places for Everyone will not cover everything that a Local Plan would cover and therefore there is still a need to produce a Local Plan for Oldham. This gives us the opportunity to ensure that we are addressing issues that are specific to Oldham, the ones that matter to our residents and businesses and providing a positive local planning framework to address those local issues. Once Places for Everyone is adopted, all nine Local Plans will be required to be in general conformity with it. As the proposed Places for Everyone evolves, strategic policies can be reflected in draft Local Plans.
- 1.6 National Planning Guidance requires Local Plans to be kept up to date and suggests policies in local plans should be reviewed to assess whether they need updating at least once every five years. As the Joint DPD was adopted in 2011 it is timely to carry out a review of the Local Plan.
- 1.7 The preparation of the Places for Everyone and new supporting evidence also makes it is necessary to review the Joint DPD.
- 1.8 Oldham's Local Plan will guide development in the borough up to 2037. It will eventually replace the current plan (Joint Core Strategy and Development Management Policies DPD) which was adopted in November 2011 and any saved planning policies.
- 1.9 Underpinning the plan will be the principles of sustainable development, it will meet the needs of Oldham and its residents while also achieving high quality design, addressing climate change and increasing accessibility for all.
- 1.10 The Oldham Local Plan will apply to the whole borough, except for that part of the borough that is the planning responsibility of the Peak District National Park Authority.
- 1.11 It is essential that the Local Plan review helps to achieve sustainable development.

Sustainable development

- 1.12 Sustainable development is defined in National Planning Policy Framework (NPPF) as meeting the needs of the present without compromising the ability of future generations to meet their own needs.

- 1.13** NPPF recognises that Local Plans should be informed throughout their preparation by a Sustainability Appraisal (SA) that meets the relevant legal requirements. This should demonstrate how the plan has addressed relevant economic, social and environmental objectives (including opportunities for net gain). Significant adverse impacts on these objectives should be avoided and, wherever possible, alternative options which reduce or eliminate such impacts should be pursued. Where significant adverse impacts are unavoidable, suitable mitigation measures should be proposed (or, where this is not possible, compensatory measures should be considered).
- 1.14** The SA will be incorporated into an IA of the Local Plan review.
- 1.15** In recognition that there will be linkages across the various assessments undertaken on the Local Plan, the SA, Strategic Environmental Assessment (SEA), Equalities Impact Assessment (EIA) and Health Impact Assessments (HIA) will all form part of the 'Integrated Assessment' (IA). These are explained further in section 3. It will assess the economic, social and economic performance of the plan.
- 1.16** This IA report has appraised the vision, plan objectives and spatial options in the Issues and Options Local Plan review.

Integrated Assessment objectives

- 1.17** The following IA objectives have been used to assess the above elements of the Local Plan.
1. To protect, conserve and enhance a high quality multifunctional green infrastructure network, including biodiversity and geodiversity that is ecologically connected
 2. To promote quality and accessible open spaces
 3. To protect and enhance the character and appearance of landscapes and townscapes, maintaining and strengthening local distinctiveness and sense of place
 4. To protect, conserve and enhance the historic environment, heritage assets and their setting
 5. To promote high quality, beautiful design that meets local design expectations
 6. To ensure land and buildings are used in an effective and efficient manner, maximising the use of brownfield land
 7. To ensure appropriate provision of supporting infrastructure to meet development needs
 8. To improve health and well-being and reduce health inequalities
 9. To minimise and mitigate against flood risk and adapt to the effects of flood risk
 10. To protect and improve the quality of water bodies and river corridors and availability of water resources
 11. To protect and improve soil quality, best and most versatile agricultural land, and remediate contaminated land
 12. To minimise energy use, promote energy efficiency and the use of renewable and low carbon energy
 13. To ensure communities and infrastructure are resilient to the effects of climate change
 14. To protect and improve air quality
 15. To protect and improve local environmental quality
 16. To promote an integrated and improved transport system that provides sustainable transport choices and improves connectivity, including the walking and cycling network and the protection of the Public Right of Way (PROW) Network
 17. To promote accessibility to key services and reduce the need to travel
 18. To promote regeneration and reduce levels of deprivation and disparity

19. To promote sustainable economic growth and job creation
20. To protect and enhance the vitality and viability of Oldham Town Centre and the centres of Chadderton, Failsworth, Hill Stores, Lees, Royton, Shaw and Uppermill
21. To promote sustainable tourism and leisure
22. To improve education attainment and skill levels
23. To provide a sustainable housing land supply and an appropriate mix of sizes, types and tenures to meet local housing needs
24. To ensure the prudent use and sustainable management of minerals
25. To manage waste sustainably in line with the waste hierarchy
26. To promote mixed, balanced and inclusive sustainable communities

Scoring system

1.18 The following scoring system was used to assess the plan:

++ = significantly positive

+ = positive

? = uncertain

-- = neutral

X = potentially negative

XX = potentially significantly negative

Outcomes:

- 1.19** The Vision scored a mixture of neutral, positives and significantly positive scores. The Vision was enhanced through the IA process through making reference to education schemes to increase education and skills achievement rates; mitigating, adapting and being resilient to climate change; multi-functional Green Infrastructure and the Nature Recovery Network; historic environment; townscapes; and accessible open spaces.
- 1.20** Plan Objective 1 scored a mixture of neutral, positives, significantly positive and uncertain scores. It has scored an uncertainty as the plan objective has been screened in by the HRA and must be subject to further screening as the Local Plan is developed. No mitigation / enhancements were identified.
- 1.21** Plan Objective 2 scored a mixture of neutral, positives and significantly positive scores. It has scored an uncertainty as the plan objective has been screened in by the HRA and must be subject to further screening as the Local Plan is developed. The plan objective was enhanced by making reference to high quality suitable developments.
- 1.22** Plan Objective 3 scored a mixture of neutral, positives and significantly positive scores. The plan objective scored a uncertain as it has been screened in by the HRA and must be subject to further screening as the Local Plan is developed. The plan objective was enhanced by making reference to supporting the expansion of green technologies and connectivity to an integrated transport system.

-
- 1.23** Plan Objectives 4 and 7 scored a mixture of neutral, positives and significantly positive scores. The plan objectives scored a uncertain as they have been screened in by the HRA and must be subject to further screening as the Local Plan is developed.
- 1.24** Plan Objectives 5, 6, 8 and 9 scored a mixture of neutral, positives and significantly positive scores. No mitigation / enhancements were identified.
- 1.25** The appraisal on the affordable housing spatial options showed that Option B (targeted approach to affordable housing) results in more positive outcomes overall than Option A (boroughwide approach).
- 1.26** The IA appraisal for Homes in Multiple Occupation (HMO) spatial options A and B both scored the same.
- 1.27** The IA of the employment allocation options shows that at this stage there are more uncertainties with Option B (new employment land improving employment connectivity to existing employment sites), which if taken forward as an option would need further assessment and mitigation if required in comparison to Option A (improve connectivity to existing employment sites). The spatial options were enhanced by making reference to sustainable connectivity.
- 1.28** The IA of of Health and Well Being showed that Option A, B and C scored neutral against most IA objectives. However, Option B and C scored a significantly positive impact against the IA objective 'To improve health and well-being and reduce health inequalities'. Option C scored significantly positive against a further two IA objectives relating to local environmental quality and centres and therefore higher overall.

2 Introduction

Local Plan Review

- 2.1** This report is the Integrated Assessment (IA) for the Local Plan review.
- 2.2** Oldham's Joint Core Strategy and Development Management Policies Development Plan Document (DPD) was adopted on 9 November 2011.
- 2.3** Since then work has started on Places for Everyone: A Joint Development Plan Document of nine Greater Manchester Districts (was Greater Manchester's Plan for Homes, Jobs and the Environment - the Greater Manchester Spatial Framework (GMSF)). Places for Everyone will provide the land for jobs and new homes across the nine districts and upon adoption, Places for Everyone will form part of the Local Plan for Oldham.
- 2.4** Principally, Places for Everyone will identify the housing numbers and employment floorspace needs and associated infrastructure requirements as well as identifying the key allocations and broad opportunity areas where this growth should be focussed.
- 2.5** Places for Everyone will not cover everything that a Local Plan would cover and therefore there is still a need to produce a Local Plan for Oldham. This gives us the opportunity to ensure that we are addressing issues that are specific to Oldham, the ones that matter to our residents and businesses and providing a positive local planning framework to address those local issues. Once Places for Everyone is adopted, all nine Local Plans will be required to be in general conformity with it. As the proposed Places for Everyone evolves, strategic policies can be reflected in draft Local Plans.
- 2.6** National planning guidance requires Local Plans to be kept up to date and suggests policies in local plans should be reviewed to assess whether they need updating at least once every five years. As the Joint DPD was adopted in 2011 it is timely to carry out a review of the Local Plan.
- 2.7** The preparation of Places for Everyone and new supporting evidence also makes it is necessary to review the Joint DPD.
- 2.8** Oldham's Local Plan will guide development in the borough up to 2037. It will eventually replace the current plan (Joint Core Strategy and Development Management Policies DPD) which was adopted in November 2011 and any saved planning policies.
- 2.9** Underpinning the plan will be the principles of sustainable development, it will meet the needs of Oldham and its residents while also achieving high quality design, addressing climate change and increasing accessibility for all.
- 2.10** Oldham's Local Plan will apply to the whole borough, except for that part of the borough that is the planning responsibility of the Peak District National Park Authority.
- 2.11** It is essential that the Local Plan review helps to achieve sustainable development.

Sustainable development

- 2.12** Sustainable development is defined in National Planning Policy Framework (NPPF) as meeting the needs of the present without compromising the ability of future generations to meet their own needs.

2.13 NPPF highlights that the purpose of the planning system is to contribute to the achievement of sustainable development. Achieving sustainable development means that the planning system has three overarching objectives, which are interdependent and need to be pursued in mutually supportive ways (so that opportunities can be taken to secure net gains across each of the different objectives):

- an economic objective – to help build a strong, responsive and competitive economy, by ensuring that sufficient land of the right types is available in the right places and at the right time to support growth, innovation and improved productivity; and by identifying and coordinating the provision of infrastructure;
- a social objective – to support strong, vibrant and healthy communities, by ensuring that a sufficient number and range of homes can be provided to meet the needs of present and future generations; and by fostering a well-designed and safe built environment, with accessible services and open spaces that reflect current and future needs and support communities' health, social and cultural well-being; and
- an environmental role – to contribute to protecting and enhancing our natural, built and historic environment; including making effective use of land, helping to improve biodiversity, using natural resources prudently, minimising waste and pollution, and mitigating and adapting to climate change, including moving to a low carbon economy.

2.14 NPPF recognises that Local Plans should be informed throughout their preparation by a sustainability appraisal that meets the relevant legal requirements. This should demonstrate how the plan has addressed relevant economic, social and environmental objectives (including opportunities for net gain). Significant adverse impacts on these objectives should be avoided and, wherever possible, alternative options which reduce or eliminate such impacts should be pursued. Where significant adverse impacts are unavoidable, suitable mitigation measures should be proposed (or, where this is not possible, compensatory measures should be considered).

2.15 The SA will be incorporated into an IA of the Local Plan review.

3 Purpose of a Integrated Assessment

- 3.1** In recognition that there will be linkages across the various assessments undertaken on the Local Plan, the SA, Strategic Environmental Assessment (SEA), Equalities Impact Assessment (EIA) and Health Impact Assessment (HIA) will all form part of the 'Integrated Assessment' (IA). Each element of the IA is explained below. It will assess the economic, social and economic performance of the plan.

Sustainability Appraisal / Strategic Environmental Assessment

- 3.2** The role of a SA is to promote sustainable development through assessing the emerging Local Plan against economic, environmental and social objectives. It is a way of ensuring that the preferred approach in the plan is the most appropriate when assessed against any reasonable alternatives. It also allows for any potential adverse effects to be identified and mitigated against and for net gain to economic, social and environmental objectives to be made.
- 3.3** The Planning and Compulsory Purchase Act (2004) requires the council to carry out a SA of each of the proposals in a Local Plan and to prepare a Local Plan with the objective of contributing to the achievement of sustainable development.
- 3.4** The council is also required under European Directive 2001/42/EC (the Strategic Environmental Assessment Directive) and The Environmental Assessment of Plans and Programmes Regulations 2004 to carry out an environmental assessment.
- 3.5** SAs incorporate the requirements of the Environmental Assessment of Plans and Programmes Regulations 2004 so that the potential environmental effects are given full consideration.
- 3.6** Therefore the IA for the Local Plan review will incorporate the requirements of the Directive and its Regulations.

Equalities Impact Assessment

- 3.7** The public sector Equality Duty (section 149 of the Equality Act) came into force on 5 April 2011. The Equality Duty applies to public bodies and requires consideration of how different people will be affected by their activities, helping them to deliver policies and services which are efficient and effective; accessible to all; and which meet different people's needs.
- 3.8** An EIA will help to eliminate unlawful discrimination, advance equality of opportunity and foster good relations between people. The EIA will consider these aims and the effects of the Local Plan review on the following groups:
- Disabled people;
 - Particular ethnic groups;
 - Men or women (including impacts due to pregnancy / maternity);
 - People of particular sexual orientation/s;
 - People in a marriage or civil partnership;
 - People who are proposing to undergo, are undergoing or have undergone a process or part of a process of gender reassignment;
 - People of low incomes;
 - People in particular age groups; and
 - Groups with particular faiths and beliefs.

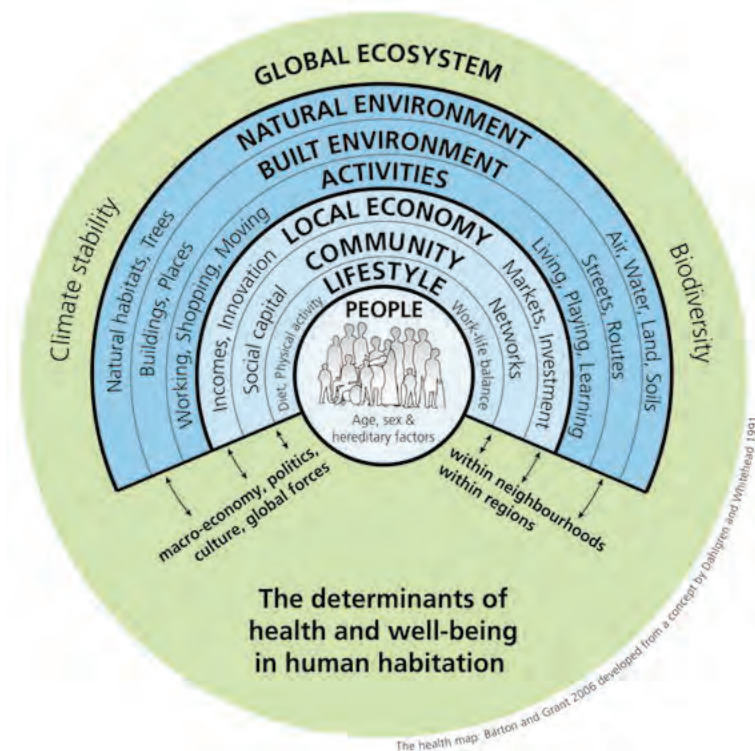
- 3.9** This Scoping Report includes an objective relating to inclusive communities. The EIA Screening Report is presented as an appendix to the IA report and will be fed into the IA as part of the iterative process.

Health Impact Assessment

- 3.10** The role of a HIA is to assess the potential effects of the Local Plan review on the health of the borough's population. It aims to minimise negative health impacts and maximise positive health impacts. The IA Scoping Report includes an objective on health and well-being. The HIA screening report is presented as a appendix to this IA report and this will be fed into the IA as part of the iterative process.
- 3.11** The Department of Health (DoH) has published guidance on preparing a HIA ⁽¹⁾ and sets out five stages of the HIA process.
- Stage 1 Screening → Answer no to screening questions → Finish HIA. Include findings in IA
 - Stage 2 Identify health impacts (if yes to screening questions)
 - Stage 3 Prioritise important health impacts → No important health impacts identified → Finish HIA. Include findings in IA
 - Stage 4 Analysis: quantify or describe health impacts
 - Stage 5 Recommendations to improve policy → Finish HIA. Include findings in IA
- 3.12** The DoH guidance states that the determinants of health are the focus of HIA. They are the social, economic, environmental and cultural factors that indirectly influence health and wellbeing. They include what we eat and drink; where we live and work; and the social relationships and connections we have with other people and organisations. Some, such as gender, age and family history of illness, cannot change or are difficult to change, while others can be changed by policy interventions. The diagram below shows the determinants of health in a community context.

1 Health Impact Assessment of Government Policy, 2010, DOH

The determinants of health



Habitats Regulations Assessment

- 3.13** The Habitats Directive (2007) requires that a Local Development Document must be subject to a Habitats Regulations Assessment (HRA) (to be taken at least through the screening stage). This includes a Local Plan.
- 3.14** The purpose of a HRA of land use plans is to ensure that protection of the integrity of European protected sites is an integral part of the planning process at the local level.
- 3.15** The HRA of the Local Plan review will be prepared as a separate report and will be an integral part of the plan preparation. The findings of the HRA will be integrated into the IA.

4 Integrated Assessment Process

- 4.1** The council has referred to guidance contained in A Practical Guide to the Strategic Environmental Assessment Directive (ODPM, 2005). Although this guidance was prepared some time ago it is still considered to be very useful in setting out the stages on IA and ensuring that the Strategic Environmental Assessment (SEA) Directive requirements are covered. The council has also referred to guidance in Planning Practice Guidance.
- 4.2** The stages of the IA are set out below.

DPD: Evidence gathering and engagement

Stage A: Setting the context and objectives, establishing the baseline and deciding on the scope

1. Identify other relevant policies, plans and programmes, and sustainability objectives
2. Collect baseline information
3. Identify sustainability issues and problems
4. Develop the IA appraisal framework
5. Consult the consultation bodies on the scope of the IA report



DPD: Production and consultation

Stage B: Developing and refining options and assessing effects

- 1: Test the DPD objectives against the IA framework
- 2: Develop the DPD options including reasonable alternatives
- 3: Evaluate the likely effects of the DPD and alternatives
- 4: Consider ways of mitigating adverse effects and maximising beneficial effects
- 5: Propose measures to monitor the significant effects of implementing the DPD



Stage C: Preparing the IA Report and the publication version of the DPD



Stage D: Seek representations on the IA report and the publication DPD from consultation bodies and the public



DPD: Submit draft DPD and supporting documents for independent examination



DPD: Outcome of examination

Consider implications for SA/SEA compliance



DPD: Local Plan adopted



Stage E: Post adoption reporting and monitoring

1. Prepare and publish post adoption statement
2. Monitor significant effects of implementing the Local Plan
3. Respond to adverse effects

4.3 This IA report is Stage B of the IA process. It has appraised the Vision, plan objectives and spatial options in the Issues and Options Local Plan review.

5 Appraisal of Issues and Options

5.1 This IA report has appraised the vision, plan objectives and spatial options in the Issues and Options Local Plan review.

Integrated Assessment objectives

5.2 The following IA objectives have been used to assess the above elements of the Local Plan. These have been developed through Stage A of the IA process, as documented in the Scoping Report.

1. To protect, conserve and enhance a high quality multifunctional green infrastructure network, including biodiversity and geodiversity that is ecologically connected
2. To promote quality and accessible open spaces
3. To protect and enhance the character and appearance of landscapes and townscape, maintaining and strengthening local distinctiveness and sense of place
4. To protect, conserve and enhance the historic environment, heritage assets and their setting
5. To promote high quality, beautiful design that meets local design expectations
6. To ensure land and buildings are used in an effective and efficient manner, maximising the use of brownfield land
7. To ensure appropriate provision of supporting infrastructure to meet development needs
8. To improve health and well-being and reduce health inequalities
9. To minimise and mitigate against flood risk and adapt to the effects of flood risk
10. To protect and improve the quality of water bodies and river corridors and availability of water resources
11. To protect and improve soil quality, best and most versatile agricultural land, and remediate contaminated land
12. To minimise energy use, promote energy efficiency and the use of renewable and low carbon energy
13. To ensure communities and infrastructure are resilient to the effects of climate change
14. To protect and improve air quality
15. To protect and improve local environmental quality
16. To promote an integrated and improved transport system that provides sustainable transport choices and improves connectivity, including the walking and cycling network and the protection of the PROW Network
17. To promote accessibility to key services and reduce the need to travel
18. To promote regeneration and reduce levels of deprivation and disparity
19. To promote sustainable economic growth and job creation
20. To protect and enhance the vitality and viability of Oldham Town Centre and the centres of Chadderton, Failsworth, Hill Stores, Lees, Royton, Shaw and Uppermill
21. To promote sustainable tourism and leisure
22. To improve education attainment and skill levels
23. To provide a sustainable housing land supply and an appropriate mix of sizes, types and tenures to meet local housing needs
24. To ensure the prudent use and sustainable management of minerals
25. To manage waste sustainably in line with the waste hierarchy
26. To promote mixed, balanced and inclusive sustainable communities

Scoring system

5.3 The following scoring system was used to assess the plan:

++ = significantly positive

+ = positive

? = uncertain

-- = neutral

X = potentially negative

XX = potentially significantly negative

6 Appraisal of Vision

6.1 The IA appraisal of the Vision is set out below.

IA appraisal of Vision

IA Objective	Vision	Justification	Mitigation / enhancements	Changes made to the Issues and options as a result of the IA
To protect, conserve and enhance a high quality multifunctional green infrastructure network, including biodiversity and geodiversity that is ecologically connected.	+	Vision seeks to protect and enhance biodiversity and reference to Green Infrastructure embedded within the built environment and connecting strategic elements of the network. Vision also includes reference to the UK's largest urban farm and eco park created at Northern Roots. The Vision is for Oldham Town Centre to have a environment that is green.	Make reference to Green Infrastructure in the opening sentence and reference to the Nature Recovery Network.	Vision now reads "Oldham's Green Infrastructure, including its' nature recovery network, will be protected and enhanced to create a net gain in Oldham's biodiversity...".
To promote quality and accessible open spaces	+	Vision includes reference to Green Infrastructure including open spaces.	Make reference to accessible open spaces.	Vision now refers to accessible open spaces.
To protect and enhance the character and appearance of landscapes and townscapes, maintaining and strengthening local distinctiveness and sense of place	+	Vision states new development will be brought forward in line with co-design expectations and codes developed with Oldham's communities. It will respect the key characteristics of Oldham's landscape types and Oldham's rich heritage will be conserved and enhanced.	Make reference to townscapes.	Vision now states development will respect the key characteristics of Oldham's townscape and landscape types.
To protect, conserve and enhance the historic environment, heritage assets and their setting	+	Vision states new development will be brought forward in line with co-design expectations and codes developed with Oldham's communities. It will	Add reference to historic environment.	Vision now states Oldham's historic environment and rich

IA Objective	Vision	Justification	Mitigation / enhancements	Changes made to the Issues and options as a result of the IA
		respect the key characteristics of Oldham's landscape types and Oldham's rich heritage will be conserved and enhanced.		heritage will be conserved and enhanced.
To promote high quality, beautiful design that meets local design expectations	+	Vision states development will be brought forward in line with co-design expectations and codes developed with Oldham's communities. It will respect the key characteristics of Oldham's landscape types and Oldham's rich heritage will be conserved and enhanced.	N/A	N/A
To ensure land and buildings are used in an effective and efficient manner, maximising the use of brownfield land	--	Vision does not make reference.	N/A. Plan should ensure that this objective is met through the site selection process and policies.	N/A
To ensure appropriate provision of supporting infrastructure to meet development needs	++	<p>The Vision makes links to supporting infrastructure through reference to Green Infrastructure, the eco park, the transport, walking and cycling network.</p> <p>Vision makes reference to supporting key capital and revenue schemes to increase skills and education achievement rates.</p> <p>Employment sites will also be identified.</p>	N/A	N/A
To improve health and well-being and reduce health inequalities	+	Vision refers to people being healthy; walking and cycling routes to make it easier for	N/A	N/A

IA Objective	Vision	Justification	Mitigation / enhancements	Changes made to the Issues and options as a result of the IA
		people to walk and cycle; and to the Green Infrastructure network including local green spaces and open spaces.		
To minimise and mitigate against flood risk and adapt to the effects of flood risk	+	<p>The Vision refers to mitigating and adapting to climate change and Green Infrastructure.</p> <p>Local Plan policy will set out flood risk guidance.</p>	Add reference to multi functional Green Infrastructure.	Vision now refers to multi functional Green Infrastructure.
To protect and improve the quality of water bodies and river corridors and availability of water resources	+	<p>Vision refers to protecting and enhancing water quality; embedding Green Infrastructure along water corridors; and mitigating and adapting to climate change.</p> <p>Policy will set out guidance on water resources and water quality.</p>	N/A	N/A
To protect and improve soil quality, best and most versatile agricultural land, and remediate contaminated land	--	No specific reference although vision refers to Green Infrastructure and conserving and enhancing heritage assets will help aid the protection of greenfield land and therefore soil quality.	N/A	N/A
To minimise energy use, promote energy efficiency and the use of renewable and low carbon energy	++	<p>Vision states Oldham will mitigate and adapt to climate change. The council will achieve carbon neutrality by 2025 and carbon neutrality for the borough by 2030.</p> <p>Oldham will have supported the Greater Manchester ambition to be one of the</p>	N/A	N/A

IA Objective	Vision	Justification	Mitigation / enhancements	Changes made to the Issues and options as a result of the IA
		leading green cities in Europe and the drive to achieve zero carbon homes. Developments will be designed to maximise energy efficiency and make use of suitable low carbon and renewable energy.		
To ensure communities and infrastructure are resilient to the effects of climate change	++	<p>Vision states Oldham will mitigate and adapt to climate change. The council will achieve carbon neutrality by 2025 and carbon neutrality for the borough by 2030.</p> <p>Oldham will have supported the Greater Manchester ambition to be one of the leading green cities in Europe and the drive to achieve zero carbon homes. Developments will be designed to maximise energy efficiency and make use of suitable low carbon and renewable energy.</p>	Amend to mitigate, adapt and be resilient to climate change.	Vision states Oldham will mitigate, adapt and be resilient to climate change.
To protect and improve air quality	++	Vision makes reference to net gain in air quality, walking and cycling, low emission buses, electric vehicles and being carbon neutral.	N/A	N/A
To protect and improve local environmental quality	--	It is considered that thematic policies will address this, including design codes.	N/A	N/A
To promote an integrated and improved transport system that provides sustainable transport choices and improves	++	Vision states Oldham's transport system will help the local economy prosper allowing our residents to fully contribute to and benefit	N/A	N/A

IA Objective	Vision	Justification	Mitigation / enhancements	Changes made to the Issues and options as a result of the IA
connectivity, including the walking and cycling network and the protection of the PROW Network		<p>from job opportunities within Oldham and in neighbouring districts across Greater Manchester. The bus system will be modern and low emission, fully integrated with the wider Greater Manchester transport network.</p> <p>The Metrolink and rail network will have the capacity, reliability, speed, resilience and quality to support growth in the North. There will be a comprehensive network of on and off-road walking and cycling routes that make it easier and safer for people to walk and cycle to key local destinations.</p> <p>Oldham's residents, businesses and visitors who choose to travel by car or van will be able to use electric vehicles with the confidence that they will be able to recharge them via public or private charging points.</p> <p>Vision also refers to Green Infrastructure which provides recreational routes and encourages walking and cycling etc.</p>		
To promote accessibility to key services and reduce the need to travel	+	Vision states there will be a comprehensive network of on and off-road walking and cycling routes that make it	N/A	N/A

IA Objective	Vision	Justification	Mitigation / enhancements	Changes made to the Issues and options as a result of the IA
		easier and safer for people to walk and cycle to key local destinations.		
To promote regeneration and reduce levels of deprivation and disparity	+	<p>Whole Vision is aiming to aid regeneration through a thriving Oldham town centre, homes of the right sizes and type delivered, having suitable employment land, making progress in living standards and wages, a well transport system that allows residents the opportunity to benefit from job opportunities; seeking a net gain in biodiversity and Green Infrastructure.</p> <p>This should help to tackle levels of deprivation and disparity.</p>	N/A	N/A
To promote sustainable economic growth and job creation	++	<p>Vision states that Oldham will be a key contributor to Greater Manchester's economy. A place where local businesses are supported to thrive and grow, and new businesses are attracted to invest in. Where every resident is enabled to contribute to, and benefit from, economic growth of the city region providing significant progress in living standards, wages and skills for everyone in Oldham.</p> <p>Oldham's transport system will help the local economy prosper allowing our residents to fully contribute</p>	N/A	N/A

IA Objective	Vision	Justification	Mitigation / enhancements	Changes made to the Issues and options as a result of the IA
		<p>to and benefit from job opportunities within Oldham and in neighbouring districts across Greater Manchester.</p> <p>Oldham Town Centre will also be a place that thrives providing opportunities to gain employment.</p>		
To protect and enhance the vitality and viability of Oldham Town Centre and the centres of Chadderton, Failsworth, Hill Stores, Lees, Royton, Shaw and Uppermill	++	Vision states Oldham Town Centre will be a place that thrives by building quality homes, providing opportunities to learn, develop new skills and gain employment, attracting, retaining and growing businesses, having a diverse culture, leisure and night time economy that attracts more visitors for longer stays, ensuring a safer, healthier, and friendly environment and it will be green, clean and sustainable. The borough's other centres will be thriving and the focus for commercial, leisure, social, homes, civic, community, and cultural uses.	N/A	N/A
To promote sustainable tourism and leisure	+	No specific reference but there are linkages with Green Infrastructure, eco park, Oldham Town Centre and the economy.	N/A	N/A
To improve education attainment and skill levels	++	The Vision makes reference to significance progress in skills, Oldham Town Centre providing opportunities to	Make reference to education facilities.	Vision now states Oldham will continue to prioritise and value

IA Objective	Vision	Justification	Mitigation / enhancements	Changes made to the Issues and options as a result of the IA
		develop new skills and the eco park being a beacon for horticulture training.		education and skills, supporting key capital and revenue schemes to increase the skills and education achievement rates, alongside supporting all providers to be rated Good or Outstanding.
To provide a sustainable housing land supply and an appropriate mix of sizes, types and tenures to meet local housing needs	++	Vision states Oldham will have delivered around 13,500 new high-quality homes of different sizes and types, including affordable housing, to meet the needs of Oldham's diverse community and build improved neighbourhoods.	N/A	N/A
To ensure the prudent use and sustainable management of minerals	--	This will be dealt with by the GM Minerals Plan.	N/A	N/A
To manage waste sustainably in line with the waste hierarchy	--	This will be dealt with by the GM Waste Plan.	N/A	N/A
To promote mixed, balanced and inclusive sustainable communities	+	<p>Vision seeks to create a place where communities thrive and the economy is inclusive.</p> <p>The Vision seeks to deliver houses of different sizes and types, including affordable housing, to meet needs of</p>	N/A	N/A

IA Objective	Vision	Justification	Mitigation / enhancements	Changes made to the Issues and options as a result of the IA
		<p>Oldham's diverse community and built improved neighbourhoods.</p> <p>The Vision seeks to make significant progress in living standards and wages and have a transport system that allows residents to benefit from job opportunities.</p>		

- 6.2** The Vision scored a mixture of neutral, positives and significantly positive scores. The Vision was enhanced through the IA process through making reference to education facilities; mitigating, adapting and being resilient to climate change; multi-functional Green Infrastructure and the Nature Recovery Network; historic environment; townscapes; and accessible open spaces.

7 Appraisal of Plan Objectives

7.1 The IA of the plan objectives is set out below. The scores are considered the same for short to long term at this stage. The appraisal also has identified direct and secondary (indirect effects).

7.2 The IA objectives as they are now worded in the Issues and Options consultation document, following the IA appraisal, are included for reference.

7.3 PO1 Building quality homes to meet the local need and diversify the housing offer by:

- providing for, and supporting the delivery of, sufficient new homes to meet the borough's local housing need;
- addressing the local housing needs of the borough including providing for the ageing population, families and disabled persons as well as opportunities for self and custom build;
- providing an appropriate level, and range, of housing tenures to meet local housing need, including affordable housing and the private rented sector, taking into account the need of particular parts of the borough;
- identifying a diverse range of sustainable and accessible sites, from small to large, for new homes across the borough;
- ensuring appropriate densities and making the best and most effective use of brownfield land, including through the use of vacant and underutilised land and buildings;
- ensuring Oldham Town Centre plays a vital role delivering around 2,500 new homes as part of it's future regeneration; and
- ensuring high quality, sustainable and well-designed new homes are delivered that contribute to creating a better place for Oldham residents.

7.4 The IA of the Plan Objective 1 is set out below.

IA appraisal of Plan Objective 1

IA Objective	Plan Objective 1	Justification	Mitigation / enhancements	Changes made to the plan objective as a result of the IA
To protect, conserve and enhance a high quality multifunctional green infrastructure network, including biodiversity and geodiversity that is ecologically connected	-- / ?	<p>No specific text although objective seeks to ensure high quality, sustainable and well designed new homes.</p> <p>Plan Objective has been screened in by HRA. Further screening will be carried out as the Local Plan is developed.</p>	N/A. Covered by plan objective 5.	N/A

IA Objective	Plan Objective 1	Justification	Mitigation / enhancements	Changes made to the plan objective as a result of the IA
To promote quality and accessible open spaces	+	No specific text although objective seeks to ensure high quality, sustainable and well designed new homes that contribute to creating a better place.	N/A. Covered by plan objective 5.	N/A
To protect and enhance the character and appearance of landscapes and townscapes, maintaining and strengthening local distinctiveness and sense of place	+	No specific text although objective seeks to ensure high quality, sustainable and well-designed new homes are delivered that contribute to creating a better place for Oldham residents; and ensuring appropriate densities.	N/A. Covered by plan objective 8.	N/A
To protect, conserve and enhance the historic environment, heritage assets and their setting.	+	No specific text although objective seeks to ensure high quality, sustainable and well-designed new homes are delivered that contribute to creating a better place for Oldham residents; and ensuring appropriate densities.	N/A. Covered by plan objective 8.	N/A
To promote high quality, beautiful design that meets local design expectations	+	No specific text although objective seeks to ensure high quality, sustainable and well-designed new homes are delivered that contribute to creating a better place for Oldham residents.	N/A. Covered by plan objective 8.	N/A
To ensure land and buildings are used in an effective and efficient manner, maximising the use of brownfield land	++	The objective seeks to identify a diverse range of sustainable and accessible sites, from small to large, for new homes across the borough; and ensure appropriate densities and making the best and most effective use of brownfield land, including through the use of vacant and underutilised land and buildings.	N/A	N/A

IA Objective	Plan Objective 1	Justification	Mitigation / enhancements	Changes made to the plan objective as a result of the IA
To ensure appropriate provision of supporting infrastructure to meet development needs	--	No specific mention although plan objective seeks to ensure sustainable homes.	N/A. Covered by plan objectives 5, 6, 7 and 9.	N/A
To improve health and well-being and reduce health inequalities	+	The plan objective refers to ensuring high quality, sustainable and well-designed new homes are delivered that contribute to creating a better place for Oldham residents; and addressing the local housing needs of the borough including providing for the ageing population, families and disabled persons as well as opportunities for self and custom build.	N/A. Covered by plan objective 7.	N/A
To minimise and mitigate against flood risk and adapt to the effects of flood risk	--	Plan objective refers to ensuring high quality, sustainable and well-designed new homes are delivered that contribute to creating a better place for Oldham residents. This should include SUDS.	N/A. Covered by plan objective 5 and 6.	N/A
To protect and improve the quality of water bodies and river corridors and availability of water resources	--	No specific reference although plan objective seeks to identify sustainable sites and high quality and well-designed homes.	N/A. Covered by plan objective 5 and 6.	N/A
To protect and improve soil quality, best and most versatile agricultural land, and remediate contaminated land	+	Plan objective seeks to ensure appropriate densities and make the best and most effective use of brownfield land, including through the use of vacant and underutilised land and buildings.	N/A	N/A

IA Objective	Plan Objective 1	Justification	Mitigation / enhancements	Changes made to the plan objective as a result of the IA
To minimise energy use, promote energy efficiency and the use of renewable and low carbon energy	+	Plan objective requires high quality, sustainable and well-designed new homes are delivered that contribute to creating a better place for Oldham residents. This should include energy efficiency.	N/A. Covered by plan objective 6.	N/A
To ensure communities and infrastructure are resilient to the effects of climate change	+	The plan objective will achieve this by identifying a diverse range of sustainable and accessible sites; and ensuring high quality, sustainable and well-designed new homes.	N/A. Covered by plan objective 6.	N/A
To protect and improve air quality	+	The plan objective will achieve this by identifying a diverse range of sustainable and accessible sites; and ensuring high quality, sustainable and well-designed new homes. This includes accessibility to public transport and connecting to walking and cycling networks.	N/A. Covered by plan objective 9.	N/A
To protect and improve local environmental quality	+	Plan objective seeks to deliver sustainable and well-designed new homes that contribute to creating a better place for Oldham residents; and through ensuring appropriate densities.	N/A. Also covered by plan objective 7.	N/A
To promote an integrated and improved transport system that provides sustainable transport choices and improves connectivity, including the walking	--	The plan objective seeks to identify a diverse range of sustainable and accessible sites; and ensure high quality, sustainable and well-designed new homes are delivered that contribute to creating a better place for Oldham residents.	N/A. Covered by plan objective 9.	N/A

IA Objective	Plan Objective 1	Justification	Mitigation / enhancements	Changes made to the plan objective as a result of the IA
and cycling network and the protection of the PROW Network				
To promote accessibility to key services and reduce the need to travel	+	The plan objective seeks to identify a diverse range of sustainable and accessible sites.	N/A	N/A
To promote regeneration and reduce levels of deprivation and disparity	++	<p>The plan objective aims to achieve this by providing an appropriate level and range of housing tenures to meet local housing need, including affordable housing and the private rented sector, taking into account the need of particular parts of the borough; and through appropriate densities and making the most effective use of brownfield land, including through the use of vacant and underutilised land and buildings.</p> <p>The plan objective also sets out that Oldham Town Centre plays a vital role delivering around 2,500 new homes as part of it's future regeneration.</p>	N/A	N/A
To promote sustainable economic growth and job creation	?	<p>The plan objective seeks to ensure sufficient new homes to meet the borough's local housing need. Providing homes creates jobs directly and indirectly.</p> <p>Oldham Town Centre plays a vital role delivering around 2,500 new homes as part of it's future regeneration. New homes in the town centre is also likely to have secondary indirect positive effects with regards to job creation within and outside the town centre.</p>	N/A. Also covered by plan objective 3.	N/A

IA Objective	Plan Objective 1	Justification	Mitigation / enhancements	Changes made to the plan objective as a result of the IA
To protect and enhance the vitality and viability of Oldham Town Centre and the centres of Chadderton, Failsworth, Hill Stores, Lees, Royton, Shaw and Uppermill	++	The plan objective will help achieve this by Oldham Town Centre playing a vital role delivering around 2,500 new homes as part of it's future regeneration and by identifying a diverse range of sustainable and accessible sites, from small to large, for new homes across the borough.	N/A	N/A
To promote sustainable tourism and leisure	--	Not specifically referenced.	N/A. Covered by plan objectives 4 and 5.	N/A
To improve education attainment and skill levels	--	Not specifically referenced.	N/A. Covered by plan objective 7.	N/A
To provide a sustainable housing land supply and an appropriate mix of sizes, types and tenures to meet local housing needs	++	The plan objective specifically seeks to achieve this.	N/A	N/A
To ensure the prudent use and sustainable management of minerals	+	Plan objective achieves this by ensuring appropriate densities and making the best and most effective use of brownfield land, including through the use of vacant and underutilised land and buildings.	N/A. GM Minerals DPD also addresses.	N/A
To manage waste sustainably in line with the waste hierarchy	--	Plan objective does not address.	N/A. GM Waste DPD addresses.	N/A
To promote mixed, balanced and inclusive sustainable communities	++	Plan objective achieves this through providing for, and supporting the delivery of, sufficient new homes to meet the borough's local housing need;	N/A	N/A

IA Objective	Plan Objective 1	Justification	Mitigation / enhancements	Changes made to the plan objective as a result of the IA
		<p>addressing the local housing needs of the borough including providing for the ageing population, families and disabled persons as well as opportunities for self and custom build.</p> <p>It also achieves this by providing an appropriate level and range of housing tenures to meet local housing need, including affordable housing and the private rented sector, taking into account the need of particular parts of the borough and through ensuring high quality, sustainable and well-designed new homes are delivered that contributes to creating a better place for Oldham residents.</p>		

7.5 Plan Objective 1 scored a mixture of neutral, positives, significantly positive and uncertain scores. It has scored an uncertainty as the plan objective has been screened in by the HRA and must be subject to further screening as the Local Plan is developed. No mitigation / enhancements were identified.

7.6 PO2 Providing opportunities to learn and gain new skills by:

- encouraging the improvement of education and skills provision by identifying suitable sites and encouraging high quality suitable developments of this nature; and
- creating employment and skills opportunities for local people as part of new developments.

7.7 The IA Appraisal of Plan Objective 2 is set out below.

IA appraisal of Plan Objective 2

IA Objective	Plan Objective 2	Justification	Mitigation / enhancements	Changes made to the plan objective as a result of the IA
To protect, conserve and enhance a high quality multifunctional green infrastructure network, including biodiversity and geodiversity that is ecologically connected	-- / ?	No link in terms of objective wording. Plan Objective has been screened in by HRA. Further screening will be carried out as the Local Plan is developed.	N/A. Covered by plan objective 5.	N/A
To promote quality and accessible open spaces	--	No link.	N/A. Covered by plan objective 5.	N/A
To protect and enhance the character and appearance of landscapes and townscapes, maintaining and strengthening local distinctiveness and sense of place	--	No link.	N/A. Covered by plan objective 8.	N/A
To protect, conserve and enhance the historic environment, heritage assets and their setting	--	No link.	N/A. Covered by plan objective 8.	N/A
To promote high quality, beautiful design that meets local design expectations	--	No link.	Amend to refer to high quality suitable developments. N/A. Covered by plan objective 8.	Plan objective refers to high quality suitable developments.

IA Objective	Plan Objective 2	Justification	Mitigation / enhancements	Changes made to the plan objective as a result of the IA
To ensure land and buildings are used in an effective and efficient manner, maximising the use of brownfield land	--	Plan objective makes reference to suitable sites.	N/A. Covered by plan objectives 1, 4 and 8.	
To ensure appropriate provision of supporting infrastructure to meet development needs	+	The plan objective is intended to ensure that sites are provided for education and skills.	N/A.	N/A
To improve health and well-being and reduce health inequalities	--	No specific mention.	N/A. Covered by plan objective 7.	N/A
To minimise and mitigate against flood risk and adapt to the effects of flood risk	--	Policy mentions suitable sites. This should take account of flood risk.	N/A. Covered by plan objectives 5 and 6.	N/A
To protect and improve the quality of water bodies and river corridors and availability of water resources	--	No specific mention, although plan objective refers to suitable sites.	N/A. Covered by plan objectives 5 and 6.	N/A
To protect and improve soil quality, best and most versatile agricultural land, and remediate contaminated land	+	Objective mentions suitable sites and developments however no mention of the use of best and most versatile agricultural land.	N/A. Covered by plan objective 5.	N/A
To minimise energy use, promote energy efficiency and the use of renewable and low carbon energy	--	No specific mention.	Make reference to high quality suitable developments. Also covered by plan objective 6.	Made reference to high quality suitable developments.

IA Objective	Plan Objective 2	Justification	Mitigation / enhancements	Changes made to the plan objective as a result of the IA
To ensure communities and infrastructure are resilient to the effects of climate change	--	No specific mention.	Make reference to high quality suitable developments. Also covered by plan objective 6.	Made reference to high quality suitable developments.
To protect and improve air quality	--	Plan objective mentions identifying suitable sites, this would take accessibility etc into account which would have an impact on air quality.	N/A. Covered by plan objective 9.	N/A
To protect and improve local environmental quality	+	Plan objective mentions identifying suitable sites, this would take account of local environmental quality.	Make reference to high quality suitable developments.	Made reference to high quality suitable developments.
To promote an integrated and improved transport system that provides sustainable transport choices and improves connectivity, including the walking and cycling network and the protection of the PROW Network	--	No specific mention. Suitable developments would need to take account of transport infrastructure.	Make reference to high quality suitable developments. Also covered by plan objective 9.	Made reference to high quality suitable developments.
To promote accessibility to key services and reduce the need to travel	+	Plan objective will help provide a key service (education facility). Suitable sites should take account of need and transport infrastructure.	N/A	N/A
To promote regeneration and reduce levels of deprivation and disparity	++	Plan objective aims to improve education and skills through new	N/A	N/A

IA Objective	Plan Objective 2	Justification	Mitigation / enhancements	Changes made to the plan objective as a result of the IA
		facilities and through employment opportunities through new development.		
To promote sustainable economic growth and job creation	++	Plan objective aims to create employment and skills opportunities.	N/A. Also covered by plan objective 3.	N/A
To protect and enhance the vitality and viability of Oldham Town Centre and the centres of Chadderton, Failsworth, Hill Stores, Lees, Royton, Shaw and Uppermill	--	Suitable sites may be within centres, however this is unknown at this stage.	N/A	N/A
To promote sustainable tourism and leisure	--	No specific link.	N/A. Covered by plan objective 4 and 5.	N/A
To improve education attainment and skill levels	++	Plan objective seeks to achieve this by encourage new education facilities.	N/A. Also covered by plan objective 7.	N/A
To provide a sustainable housing land supply and an appropriate mix of sizes, types and tenures to meet local housing needs	--	No specific link. The plan objective is seeking to provide the supporting infrastructure.	N/A. Covered by plan objective 1.	N/A
To ensure the prudent use and sustainable management of minerals	--	Mentions identifying suitable sites which may utilise brownfield land however no specific mention.	N/A. GM Minerals DPD addresses.	N/A
To manage waste sustainably in line with the waste hierarchy	--	No specific link.	N/A. GM Waste Plan addresses.	N/A

IA Objective	Plan Objective 2	Justification	Mitigation / enhancements	Changes made to the plan objective as a result of the IA
To promote mixed, balanced and inclusive sustainable communities	+	Plan objective aims to improve employment and skill levels which helps promote inclusive communities.	N/A	N/A

- 7.8** Plan Objective 2 scored a mixture of neutral, positives and significantly positive scores. It has scored an uncertainty as the plan objective has been screened in by the HRA and must be subject to further screening as the Local Plan is developed. The plan objective was enhanced by making reference to high quality suitable developments.

7.9 PO3 Providing opportunities to grow local businesses and create jobs by:

- providing sites suitable and attractive for existing and new businesses to locate to and expand on;
- encouraging and facilitating the development of the borough's key growth sectors;
- supporting the expansion of digital infrastructure to assist economic growth and social well-being;
- supporting leisure and tourism activity in the right places, motivating local residents and visitors to spend leisure time and money in the borough;
- supporting the expansion of green technologies to achieve the carbon neutrality targets, and at the same time grow the local 'green economy';
- maximising the opportunities of our key Strategic Sites, our Town Centres, our employment allocations and our Business and Employment Areas (BEAs) and Saddleworth Employment Areas (SEAs); and
- ensuring access to employment and leisure opportunities for all, including connectivity to an integrated transport system.

7.10 The IA appraisal of Plan Objective 3 is set out below.

IA appraisal of Plan Objective 3

IA Objective	Plan Objective 3	Justification	Mitigation / enhancements	Changes made to the plan objective as a result of the IA
To protect, conserve and enhance a high quality multifunctional green infrastructure network, including biodiversity and geodiversity that is ecologically connected	-- / ?	No specific text although plan objective supports leisure and tourism activity in the right places, which could have connections to green infrastructure. Plan Objective has been screened in by HRA. Further screening will be carried out as the Local Plan is developed.	N/A. Covered by plan objective 5.	N/A
To promote quality and accessible open spaces	--	No links.	N/A. Covered by plan objective 5.	N/A
To protect and enhance the character and appearance of landscapes and townscape, maintaining	--	No specific mention.	N/A. Covered by plan objective 8.	N/A

IA Objective	Plan Objective 3	Justification	Mitigation / enhancements	Changes made to the plan objective as a result of the IA
and strengthening local distinctiveness and sense of place				
To protect, conserve and enhance the historic environment, heritage assets and their setting	--	No specific mention.	N/A. Covered by plan objective 8.	N/A
To promote high quality, beautiful design that meets local design expectations	--	No specific mention.	N/A. Covered by plan objective 8.	N/A
To ensure land and buildings are used in an effective and efficient manner, maximising the use of brownfield land	+	Plan objective helps to meet IA objective by identifying suitable sites, and maximising the opportunities of town centres, employment allocations, Business Employment Areas (BEAs) and Saddleworth Employment Areas (SEAs), which are mostly brownfield.	N/A	N/A
To ensure appropriate provision of supporting infrastructure to meet development needs	+	Plan objective helps meet IA objective by supporting the expansion of digital infrastructure to assist economic growth and social well-being; and ensuring access to employment.	N/A	N/A
To improve health and well-being and reduce health inequalities	+	Plan objective seeks to creating jobs and access to jobs which indirectly may help to reduce health inequalities. Plan objective seeks to assist social well-being.	N/A. Covered by plan objective 7.	N/A

IA Objective	Plan Objective 3	Justification	Mitigation / enhancements	Changes made to the plan objective as a result of the IA
To minimise and mitigate against flood risk and adapt to the effects of flood risk	--	No specific mention.	N/A. Covered by plan objective 5 and 6.	N/A
To protect and improve the quality of water bodies and river corridors and availability of water resources	--	<p>Maximising opportunities at BEAs and SEAs may help in safeguarding water availability.</p> <p>Supporting tourism may help provide opportunities to enhance the water network.</p>	N/A. Covered by plan objectives 5 and 6.	N/A
To protect and improve soil quality, best and most versatile agricultural land, and remediate contaminated land	+	Maximising opportunities at BEAs and SEAs with help protect soil and agricultural land.	N/A	N/A
To minimise energy use, promote energy efficiency and the use of renewable and low carbon energy	--	No mention. However Green New Deal has a strong green economy strand.	<p>Suggest Green New Deal embedded within plan objective.</p> <p>Also covered by plan objective 6.</p>	Reference to supporting the expansion of green technologies to achieve the carbon neutrality targets, and at the same time grow the local 'green economy' added.
To ensure communities and infrastructure are resilient to the effects of climate change	--	No mention. However Green New Deal has a strong green economy strand and references to being resilient.	<p>Suggest Green New Deal embedded within plan objective.</p> <p>Also covered by plan objective 6.</p>	Reference to supporting the expansion of green technologies to achieve the carbon neutrality

IA Objective	Plan Objective 3	Justification	Mitigation / enhancements	Changes made to the plan objective as a result of the IA
				targets, and at the same time grow the local 'green economy' added.
To protect and improve air quality	--	Supporting digital infrastructure may encourage home working and therefore reduce travel. Ensuring access to employment for all indicates that public transport connections will be provided however no specific mention.	N/A. Covered by plan objective 9.	N/A
To protect and improve local environmental quality	+	No specific mention.	N/A. Covered by plan objective 7.	N/A
To promote an integrated and improved transport system that provides sustainable transport choices and improves connectivity, including the walking and cycling network and the protection of the PROW Network	--	Plan objective seeks to ensure access to employment and leisure opportunities for all, which indicates through transport connections.	Suggest adding 'including through connectivity to an integrated transport system' at the end of access to employment and leisure opportunities for all. Also covered by plan objective 9.	Reference made to connectivity to an integrated transport system.
To promote accessibility to key services and reduce the need to travel	+	Employment is a key service therefore the plan objective will be providing land for people to access	N/A	N/A

IA Objective	Plan Objective 3	Justification	Mitigation / enhancements	Changes made to the plan objective as a result of the IA
		<p>employment opportunities, which may reduce the need to travel.</p> <p>The plan objective supports the expansion of digital infrastructure which will help reduce the need to travel.</p>		
To promote regeneration and reduce levels of deprivation and disparity	+	Plan objective achieves this by ensuring access to employment and leisure opportunities for all; encouraging and facilitating the development of the borough's key growth sectors.	N/A.	N/A
To promote sustainable economic growth and job creation	++	Plan objective achieves this by ensuring access to employment and leisure opportunities for all; and encouraging and facilitating the development of the borough's key growth sectors.	N/A	N/A
To protect and enhance the vitality and viability of Oldham Town Centre and the centres of Chadderton, Failsworth, Hill Stores, Lees, Royton, Shaw and Uppermill	++	Plan objective makes reference to maximising opportunities in town centres and supporting leisure and tourism.	N/A	N/A
To promote sustainable tourism and leisure	++	Plan objective makes reference to maximising opportunities in town centres and supporting leisure and tourism.	N/A. Covered by plan objective 4.	N/A

IA Objective	Plan Objective 3	Justification	Mitigation / enhancements	Changes made to the plan objective as a result of the IA
To improve education attainment and skill levels	--	No specific mention.	Covered by plan objectives 2 and 7.	N/A
To provide a sustainable housing land supply and an appropriate mix of sizes, types and tenures to meet local housing needs	--	No specific mention.	Covered by plan objective 1.	N/A
To ensure the prudent use and sustainable management of minerals	+	Maximising the opportunities of key Strategic Sites, Town Centres, employment allocations, BEAs and SEAs will help protect further greenfield land being allocated for employment, which could impact on minerals.	N/A. GM Minerals DPD addresses.	N/A
To manage waste sustainably in line with the waste hierarchy	--	No specific mention.	N/A. GM Waste Plan addresses.	N/A
To promote mixed, balanced and inclusive sustainable communities	+	Plan objective achieves this by seeking access to employment opportunities for all, which is inclusive. Employment sites are spread throughout the borough to help create mixed and balanced communities.	N/A	N/A

7.11 Plan Objective 3 scored a mixture of neutral, positives and significantly positive scores. The plan objective scored a uncertain as it has been screened in by the HRA and must be subject to further screening as the Local Plan is developed. The plan objective was enhanced by making reference to supporting the expansion of green technologies and connectivity to an integrated transport system.

7.12 PO4 Supporting thriving Town Centres by:

- promoting and supporting the delivery of Oldham Town Centre Vision, and any other appropriate plans or projects that facilitate the development of the borough's centres;
- raising the profile of Oldham Town Centre as a visitor destination, providing more compelling reasons to visit and stay longer;
- promoting the diversification of the borough's centres as places to live;
- incorporating multi functional, useable green infrastructure in our centres to make them attractive locations that people want to spend time in;
- ensuring our centres are places that thrive by having diverse cultural, leisure and night time economies; and
- creating safe, healthy and friendly town centres that are accessible for all, enable active streets and decrease the opportunities for crime.

7.13 The IA appraisal of Plan Objective 4 is set out below.

IA appraisal of Plan Objective 4

IA Objective	Plan Objective 4	Justification	Mitigation / enhancement	Changes made to plan objective as a result of IA
To protect, conserve and enhance a high quality multifunctional green infrastructure network, including biodiversity and geodiversity that is ecologically connected	++ / ?	Plan objective helps achieve this by incorporating multi-functional, useable green infrastructure in our centres to make them attractive locations that people want to spend time in. Plan Objective has been screened in by HRA. Further screening will be carried out as the Local Plan is developed.	N/A. Covered by plan objective 5.	N/A
To promote quality and accessible open spaces	++	Plan objective helps achieve this by incorporating multi-functional, useable green infrastructure in our centres to make them attractive locations that people want to spend time in.	N/A. Covered by plan objective 5.	N/A
To protect and enhance the character and appearance of landscapes and townscapes, maintaining	--	No specific mention.	N/A. Covered by plan objective 8.	N/A

IA Objective	Plan Objective 4	Justification	Mitigation / enhancement	Changes made to plan objective as a result of IA
and strengthening local distinctiveness and sense of place				
To protect, conserve and enhance the historic environment, heritage assets and their setting	--	No specific mention.	N/A. Covered by plan objective 8.	N/A
To promote high quality, beautiful design that meets local design expectations	--	No specific mention.	N/A. Covered by plan objective 8.	N/A
To ensure land and buildings are used in an effective and efficient manner, maximising the use of brownfield land	++	The plan objective seeks to support the regeneration of the town centres and therefore maximises the use of brownfield land.	N/A	N/A
To ensure appropriate provision of supporting infrastructure to meet development needs	+	Plan objective helps achieve this by ensuring provision of Green Infrastructure. Plan objective also helps achieve IA objective indirectly by focussing development in centres as this is where transport infrastructure is focussed.	N/A. Covered by plan objectives 5, 6, 7 and 9.	N/A
To improve health and well-being and reduce health inequalities	+	Incorporating Green Infrastructure into centres will help improve health.	N/A. Covered by plan objective 7.	N/A
To minimise and mitigate against flood risk and adapt to the effects of flood risk	+	Incorporating multi functional Green Infrastructure into centres will help mitigate against flood risk.	N/A. Covered by plan objectives 5 and 6.	N/A

IA Objective	Plan Objective 4	Justification	Mitigation / enhancement	Changes made to plan objective as a result of IA
To protect and improve the quality of water bodies and river corridors and availability of water resources	--	Incorporating multi functional Green Infrastructure into centres will help delivered improved water quality, where appropriate.	N/A. Covered by plan objectives 5 and 6.	N/A
To protect and improve soil quality, best and most versatile agricultural land, and remediate contaminated land	+	By promoting the diversification of the borough's centres as places to live this takes the pressure of open land and therefore agricultural land and best quality soil.	N/A	N/A
To minimise energy use, promote energy efficiency and the use of renewable and low carbon energy	--	Promoting the diversification of the borough's centres as places to live should provide opportunities for heat networks.	N/A. Covered by plan objective 6.	N/A
To ensure communities and infrastructure are resilient to the effects of climate change	+	Plan objectives contributes towards IA objective by incorporating multi-functional, useable green infrastructure in the centres will provide cooling.	N/A. Covered by plan objective 6.	N/A
To protect and improve air quality	++	<p>Incorporating multi-functional, useable green infrastructure in our centres will help protect and improve air quality.</p> <p>Indirectly by encouraging people to live, work and visit within the borough's centres this will reduce the need to travel and will allow people to access public transport, which is more frequent and well connected in centres therefore offering more sustainable transport choices.</p>	N/A. Covered by plan objective 9.	N/A

IA Objective	Plan Objective 4	Justification	Mitigation / enhancement	Changes made to plan objective as a result of IA
		The plan objective also seeks to enable active streets, encouraging walking and cycling.		
To protect and improve local environmental quality	+	<p>The plan objective seeks to create safe and friendly town centres and decrease opportunities for crime. It also seeks to incorporate Green Infrastructure to create attractive locations.</p> <p>Air quality will be improved through access to public transport and services, reducing the need to travel and encouraging sustainable modes of transport.</p>	N/A. Covered by plan objective 7.	N/A
To promote an integrated and improved transport system that provides sustainable transport choices and improves connectivity, including the walking and cycling network and the protection of the PROW Network	+	<p>The plan objective seeks to create active streets.</p> <p>Indirectly the plan objective will contribute as centres are the most well served by public transport connections.</p> <p>Incorporating multi-functional, useable green infrastructure in our centres to make them attractive locations that people want to spend time in.</p> <p>The plan objective also seeks to raise the profile of Oldham Town Centre, which as a accessible centre will help achieve this IA objective.</p>	N/A	

IA Objective	Plan Objective 4	Justification	Mitigation / enhancement	Changes made to plan objective as a result of IA
To promote accessibility to key services and reduce the need to travel	++	<p>The plan objective seeks to create active streets.</p> <p>Indirectly the plan objective will contribute as centres are the most well served by public transport connections and have a mix of uses, including key services, reducing the need to travel.</p>	N/A	N/A
To promote regeneration and reduce levels of deprivation and disparity	++	<p>Plan objective seeks to support regeneration of town centres and create friendly town centres accessible for all.</p> <p>Indirectly by supporting thriving town centres this should help to reduce levels of deprivation and disparity through for example providing homes for a mix of tenure.</p>	N/A	N/A
To promote sustainable economic growth and job creation	++	<p>Oldham Town Centre Vision encourages new employment floorspace.</p> <p>Oldham Town Centre as a visitor destination should promote jobs; leisure and night time economies. It also seeks to ensure the centres are accessible for all therefore ensuring access to job opportunities.</p>	N/A. Covered by plan objective 3.	N/A
To protect and enhance the vitality and viability of Oldham Town Centre and the centres of	++	The plan objective seeks to ensure thriving centres.	N/A	N/A

IA Objective	Plan Objective 4	Justification	Mitigation / enhancement	Changes made to plan objective as a result of IA
Chadderton, Failsworth, Hill Stores, Lees, Royton, Shaw and Uppermill				
To promote sustainable tourism and leisure	++	The plan objective will contribute to IA objective by raising the profile of Oldham Town Centre as a visitor destination, providing more compelling reasons to visit and stay longer; incorporating multi-functional, useable green infrastructure in our centres to make them attractive locations that people want to spend time in; ensuring our centres are places that thrive by having diverse cultural, leisure and night time economies.	N/A.	N/A
To improve education attainment and skill levels	--	No specific reference although there are education facilities within Oldham Town Centre.	N/A. Covered by plan objectives 2 and 7.	N/A
To provide a sustainable housing land supply and an appropriate mix of sizes, types and tenures to meet local housing needs	+	The plan objective supports this IA objective by promoting the diversification of the borough's centres as places to live and supporting delivery of Oldham Town Centre Vision.	N/A. Covered by plan objective 1.	N/A
To ensure the prudent use and sustainable management of minerals	+	Indirectly by supporting thriving centres and focussing development within them helps to reduce the pressure on open land and therefore minerals.	N/A. GM Minerals Plan addresses.	N/A
To manage waste sustainably in line with the waste hierarchy	--	No specific mention.	N/A. GM Waste Plan addresses.	N/A

IA Objective	Plan Objective 4	Justification	Mitigation / enhancement	Changes made to plan objective as a result of IA
To promote mixed, balanced and inclusive sustainable communities	++	<p>The plan objective helps achieve this by creating safe, healthy and friendly town centres that are accessible for all, enabling active streets and decreasing the opportunities for crime.</p> <p>The plan objective also supports a mix of uses by creating a place to live, and supporting culture, leisure and night time economies.</p>	N/A	N/A

7.14 Plan Objective 4 scored a mixture of neutral, positives and significantly positive scores. The plan objective scored a uncertain as it has been screened in by the HRA and must be subject to further screening as the Local Plan is developed.

7.15 PO5 Ensuring Oldham is a greener borough by:

- designating Local Green Spaces and giving them strong policy protection against development;
- protecting, enhancing and promoting the positive use of the Green Belt;
- protecting, enhancing and improving access to the strategic elements of the Green Infrastructure network including supporting projects such as City of Trees and Northern Roots;
- embedding green infrastructure within and between Oldham's built environment through the use of sustainable drainage, green linkages, green walls, green roofs, soft landscaping, trees;
- re-naturalising and restoring river corridors, canals and waterways where development opportunities arise, to improve the water quality, biodiversity, and to encourage sustainable travel;
- achieving a meaningful net gain in Oldham's biodiversity, including the species identified in Biodiversity Action Plans, priority habitats and other protected species;
- providing new or improved open space, sport and recreation facilities to promote health and well-being and support new homes, particularly in areas of recognised need; and
- protecting and enhancing Oldham's characteristic landscape features and ensure that new development makes a positive contribution to ensure that these features are retained.

7.16 The IA appraisal of Plan Objective 5 is set out below.

IA appraisal of Plan Objective 5

IA Objective	Plan Objective 5	Justification	Mitigation / enhancements	Changes made to plan objective 5 as a result of IA
To protect, conserve and enhance a high quality multifunctional green infrastructure network, including biodiversity and geodiversity that is ecologically connected	++	Plan objective 5 seeks to achieve this.	N/A	N/A
To promote quality and accessible open spaces	++	Plan objective will provide new or improved open space, sport and recreation facilities. Also seeks to improve access to strategic elements of Green Infrastructure.	N/A	N/A
To protect and enhance the character and appearance of	++	Plan objective will indirectly achieve this as it seeks to protect and enhance Green	N/A. Covered by plan objective 8.	N/A

IA Objective	Plan Objective 5	Justification	Mitigation / enhancements	Changes made to plan objective 5 as a result of IA
landscapes and townscapes, maintaining and strengthening local distinctiveness and sense of place		Infrastructure and waterbodies which are landscape features and directly as it seeks to protect and enhance landscape features.		
To protect, conserve and enhance the historic environment, heritage assets and their setting	++	<p>Plan objective will achieve this through re-naturalising and restoring river corridors, canals and waterways, as canals are a heritage asset; and protecting and enhancing landscape features, as this this would include historic field patterns, etc.</p> <p>The plan objective also seeks to protect and enhance Green Infrastructure which includes registered parks and gardens.</p>	N/A. Covered by plan objective 8.	N/A
To promote high quality, beautiful design that meets local design expectations	++	Plan objective achieves this by embedding green infrastructure within and between Oldham's built environment through the use of sustainable drainage, green linkages, green walls, green roofs, soft landscaping and trees; and protecting and enhancing Oldham's characteristic landscape features and ensure that new development makes a positive contribution to ensure that these features are retained.	N/A. Covered by plan objective 8.	N/A
To ensure land and buildings are used in an effective and efficient manner, maximising the use of brownfield land	++	The plan objective indirectly helps achieve this by designating Local Green Space, promoting the positive use of the Green Belt and protecting and enhancing Green Infrastructure,	N/A	N/A

IA Objective	Plan Objective 5	Justification	Mitigation / enhancements	Changes made to plan objective 5 as a result of IA
		which focusses development towards previously developed land.		
To ensure appropriate provision of supporting infrastructure to meet development needs	++	The plan objective will support this as Green Infrastructure is a type of infrastructure which will support development needs, including the use of sustainable drainage systems.	N/A. Covered by plan objectives 6, 7 and 9.	N/A
To improve health and well-being and reduce health inequalities	++	Plan objective will contribute to this through designating Local Green Spaces; through the positive use of the Green Belt; through sustainable travel created by enhanced Green Infrastructure and through new or improved open spaces, sport and recreation facilities, particularly in areas of recognised need.	N/A. Covered by plan objective 7.	N/A
To minimise and mitigate against flood risk and adapt to the effects of flood risk	++	Plan objective will help achieve this by protecting, enhancing and improving access to the strategic elements of the Green Infrastructure – embedding green infrastructure within and between Oldham’s built environment through the use of sustainable drainage, green linkages, green walls, green roofs, soft landscaping and trees.	N/A. Covered by plan objective 6.	N/A
To protect and improve the quality of water bodies and river corridors and availability of water resources	++	Plan objective will help achieve this by embedding green infrastructure within and between Oldham’s built environment through the use of sustainable drainage; and through re-naturalising and restoring river corridors, canals	N/A. Covered by plan objective 6.	N/A

IA Objective	Plan Objective 5	Justification	Mitigation / enhancements	Changes made to plan objective 5 as a result of IA
		and waterways, where development opportunities arise to improve the water quality.		
To protect and improve soil quality, best and most versatile agricultural land, and remediate contaminated land	++	<p>Plan objective will achieve this indirectly by designating Local Green Space, promoting the positive use of the Green Belt, and protecting and enhancing Green Infrastructure as this focusses development towards previously developed land.</p> <p>Protecting and enhancing Green Infrastructure will also achieve this. The GI network includes the uplands.</p>	N/A	N/A
To minimise energy use, promote energy efficiency and the use of renewable and low carbon energy	--	No specific link.	N/A. Covered by plan objective 6.	N/A
To ensure communities and infrastructure are resilient to the effects of climate change	++	Plan objective will help achieve this through protecting, enhancing and improving access to the strategic elements of the Green Infrastructure and embedding green infrastructure within and between Oldham's built environment through the use of sustainable drainage, green linkages, green walls, green roofs, soft landscaping, trees. This will help mitigate flood risk and provide cooling.	N/A. Covered by plan objective 6.	N/A
To protect and improve air quality	++	The plan objective will help achieve this by protecting and enhancing Green Infrastructure, including supporting projects such as City of Trees which will help improve air quality.	N/A. Covered by plan objective 9.	N/A

IA Objective	Plan Objective 5	Justification	Mitigation / enhancements	Changes made to plan objective 5 as a result of IA
		In addition re-naturalising river corridors etc will help encourage sustainable travel reducing air pollution.		
To protect and improve local environmental quality	+	<p>The plan objective helps to achieve this by embedding green infrastructure within and between Oldham's built environment through the use of sustainable drainage, green linkages, green walls, green roofs, soft landscaping, trees.</p> <p>This can also help mitigate noise pollution.</p> <p>The plan objective also seeks to re-naturalising and restoring river corridors, canals and waterways, where development opportunities arise to improve the water quality, biodiversity, and to encourage sustainable travel.</p>	N/A. Covered by plan objective 7.	N/A
To promote an integrated and improved transport system that provides sustainable transport choices and improves connectivity, including the walking and cycling network and the protection of the PROW Network	++	<p>The plan objective achieves this by protecting, enhancing and improving access to the strategic elements of the Green Infrastructure network including supporting projects such as City of Trees and Northern Roots. The Green Infrastructure network includes Public Rights of Way.</p> <p>Embedding Green Infrastructure within and between Oldham's built environment and re-naturalising and restoring</p>	N/A. Covered by plan objective 9.	N/A

IA Objective	Plan Objective 5	Justification	Mitigation / enhancements	Changes made to plan objective 5 as a result of IA
		river corridors, canals and waterways will help to encourage sustainable travel.		
To promote accessibility to key services and reduce the need to travel	+	By designating Local Green Spaces, ensuring the provision of Open Space and embedding Green Infrastructure, this reduces the need for people to travel to access open spaces and the countryside.	N/A	N/A
To promote regeneration and reduce levels of deprivation and disparity	+	The plan objective helps achieve this by providing new or improved open space, sport and recreation facilities particularly in areas of recognised need; and protecting, enhancing and improving access to the strategic elements of the Green Infrastructure network.	N/A	N/A
To promote sustainable economic growth and job creation	+	Projects such as Northern Roots may help create jobs but there are no specific links. It is recognised that a benefit of Green Infrastructure is economic growth as it creates attractive places.	N/A	N/A
To protect and enhance the vitality and viability of Oldham Town Centre and the centres of Chadderton, Failsworth, Hill Stores, Lees, Royton, Shaw and Uppermill	+	The objective would help achieve this through embedding Green Infrastructure in centres, creating attractive places.	N/A	N/A
To promote sustainable tourism and leisure	+	The plan objective helps achieve this by protecting, enhancing and promoting the positive use of the Green Belt; protecting, enhancing and improving access	N/A	N/A

IA Objective	Plan Objective 5	Justification	Mitigation / enhancements	Changes made to plan objective 5 as a result of IA
		to the strategic elements of the Green Infrastructure network including supporting projects such as Northern Roots; and re-naturalising and restoring river corridors, canals and waterways, where development opportunities arise to improve the water quality, biodiversity, and to encourage sustainable travel.		
To improve education attainment and skill levels	--	No specific link.	N/A. Covered by plan objectives 2 and 7.	N/A
To provide a sustainable housing land supply and an appropriate mix of sizes, types and tenures to meet local housing needs	--	No specific link.	N/A. Covered by plan objective 1.	N/A
To ensure the prudent use and sustainable management of minerals	++	Protecting the remaining Green Belt will ensure the minerals safeguarding area is protected. Protecting and enhancing Oldham's characteristic landscape features and ensuring that new development makes a positive contribution to ensure that these features are retained would ensure the sustainable management of minerals which takes into account landscape.	N/A. GM Minerals Plan addresses.	N/A
To manage waste sustainably in line with the waste hierarchy	--	No specific link.	N/A. GM Waste Plan addresses.	N/A

IA Objective	Plan Objective 5	Justification	Mitigation / enhancements	Changes made to plan objective 5 as a result of IA
To promote mixed, balanced and inclusive sustainable communities	+	<p>The plan objective helps achieve this by embedding green infrastructure within and between Oldham's built environment; designating Local Green Spaces; providing new or improved open space, sport and recreation facilities to promote health and well-being, particularly in areas of recognised need; and promoting the positive use of the Green Belt.</p> <p>This helps provide balanced and inclusive communities.</p>	N/A	N/A

7.17 Plan Objective 5 scored a mixture of neutral, positives and significantly positive scores. No mitigation / enhancements were identified.

7.18 PO6 Embedding sustainability, energy efficiency and low (zero) carbon by:

- supporting secure, affordable and sustainable energy through a positive approach towards community and commercial energy schemes, the identification of low carbon and renewable energy opportunities and the implementation of the energy hierarchy within new developments;
- reducing the risk of flooding to people and property taking into account climate change;
- managing flood risk through the use of integrated water management and the provision of green infrastructure, including the use of Sustainable Urban Drainage Systems (SUDS), which offer multi-functional benefits such as environmental improvement and biodiversity net gain, urban cooling and recreation to manage climate change stresses; and
- ensuring that water resources are protected and water quality is improved.

7.19 The IA appraisal of Plan Objective 6 is set out below.

IA appraisal of Plan Objective 6

IA Objective	Plan Objective 6	Justification	Mitigation / enhancements	Changes made to plan objective as a result of IA
To protect, conserve and enhance a high quality multifunctional green infrastructure network, including biodiversity and geodiversity that is ecologically connected	++	The plan objective achieves this through managing flood risk through the use of integrated water management and the provision of green infrastructure, including the use of Sustainable Urban Drainage Systems (SUDS), which offer multi-functional benefits such as environmental improvement and biodiversity net gain; and ensuring that water resources are protected, and water quality is improved.	N/A. Covered by plan objective 5.	N/A
To promote quality and accessible open spaces	--	No specific reference.	N/A. Covered by plan objective 5.	N/A
To protect and enhance the character and appearance of landscapes and townscapes, maintaining and	--	No specific reference.	N/A. Covered by plan objective 8.	N/A

IA Objective	Plan Objective 6	Justification	Mitigation / enhancements	Changes made to plan objective as a result of IA
strengthening local distinctiveness and sense of place				
To protect, conserve and enhance the historic environment, heritage assets and their setting	+	The plan objective states water resources will be protected and water quality improved, which includes canals, which are a heritage asset.	N/A. Covered by plan objective 8.	N/A
To promote high quality, beautiful design that meets local design expectations	+	Managing flood risk through the use of integrated water management and the provision of green infrastructure, including the use of SUDS would help create attractive places. Incorporating sustainable energy would ensure that high quality developments are delivered.	N/A. Covered by plan objective 8.	N/A
To ensure land and buildings are used in an effective and efficient manner, maximising the use of brownfield land	+	Incorporating sustainable energy and SUDS will ensure that land is used efficiently and effectively.	N/A	N/A
To ensure appropriate provision of supporting infrastructure to meet development needs	++	The objective will achieve this through provision of sustainable energy, identification of energy opportunities, implementation of SUDS and protecting water resources.	N/A. Covered by plan objectives 5, 7 and 9.	N/A
To improve health and well-being and reduce health inequalities	+	Indirectly as promoting sustainable energy will lead to improved air quality, reduced flood risk will help reduce stress and risk to life;	N/A. Covered by plan objective 7.	N/A

IA Objective	Plan Objective 6	Justification	Mitigation / enhancements	Changes made to plan objective as a result of IA
		the benefits of SUDS; also includes attractive places for informal recreation.		
To minimise and mitigate against flood risk and adapt to the effects of flood risk	++	Plan objective 6 seeks to achieve this.	N/A	N/A
To protect and improve the quality of water bodies and river corridors and availability of water resources	++	Plan objective seeks to achieve this.	N/A. Covered by plan objective 5.	N/A
To protect and improve soil quality, best and most versatile agricultural land, and remediate contaminated land	--	<p>The plan objective will help achieve this as SUDS will provide Green Infrastructure, including soil.</p> <p>However, it is felt that the impact would be neutral.</p>	N/A	N/A
To minimise energy use, promote energy efficiency and the use of renewable and low carbon energy	++	The plan objective seeks to achieve this through supporting secure, affordable and sustainable energy through a positive approach towards community and commercial energy schemes, the identification of low carbon and renewable energy opportunities and the implementation of the energy hierarchy within new developments.	N/A	N/A
To ensure communities and infrastructure are resilient to the effects of climate change	++	Plan objective seeks to achieve this through reducing risk to people and property taking into account climate change and managing flood risk through the use of green	N/A	N/A

IA Objective	Plan Objective 6	Justification	Mitigation / enhancements	Changes made to plan objective as a result of IA
		infrastructure, including SUDS which can also offer cooling.		
To protect and improve air quality	++	The plan objective will achieve this through low carbon energy opportunities and the promotion of above ground SUDS, which would offer wider benefits.	N/A. Covered by plan objective 9.	N/A
To protect and improve local environmental quality	+	Having a positive approach towards energy schemes should ensure that local environmental quality is protected and improved and delivering SUDS should also help to achieve this. Green Infrastructure can also help with noise pollution.	N/A. Covered by plan objective 7.	N/A
To promote an integrated and improved transport system that provides sustainable transport choices and improves connectivity, including the walking and cycling network and the protection of the PROW Network	+	The plan objective may help achieve this as SUDS may be delivered as part of the Green Infrastructure network which encourages walking and cycling.	N/A. Covered by plan objective 9.	N/A
To promote accessibility to key services and reduce the need to travel	--	No specific link.	N/A. Covered by plan objective 9.	N/A
To promote regeneration and reduce levels of deprivation and disparity	+	Opportunities for energy efficiency and SUDS etc will be sought boroughwide. It	N/A	N/A

IA Objective	Plan Objective 6	Justification	Mitigation / enhancements	Changes made to plan objective as a result of IA
		should however bring more people out of fuel poverty in the longer term.		
To promote sustainable economic growth and job creation	+	The plan objective will help achieve this as supporting community and commercial energy schemes may help generate jobs related to the green sector.	N/A. Covered by plan objective 3.	N/A
To protect and enhance the vitality and viability of Oldham Town Centre and the centres of Chadderton, Failsworth, Hill Stores, Lees, Royton, Shaw and Uppermill	+	The plan objective is applicable borough wide, including in centres. Decentralised energy may help provide affordable energy helping to make schemes more viable.	N/A	N/A
To promote sustainable tourism and leisure	--	No specific link.	N/A. Covered by plan objectives 3, 4 and 5.	
To improve education attainment and skill levels	--	No specific link.	N/A. Covered by plan objectives 2 and 7.	N/A
To provide a sustainable housing land supply and an appropriate mix of sizes, types and tenures to meet local housing needs	--	No specific link.	Covered by plan objective 1.	N/A
To ensure the prudent use and sustainable management of minerals	--	No specific link.	N/A. GM Minerals Plan addresses.	N/A
To manage waste sustainably in line with the waste hierarchy	--	No specific link.	N/A. GM Waste Plan addresses.	N/A

IA Objective	Plan Objective 6	Justification	Mitigation / enhancements	Changes made to plan objective as a result of IA
To promote mixed, balanced and inclusive sustainable communities	+	The plan objective will help achieve this as supporting secure, affordable and sustainable energy should help alleviate fuel poverty.	N/A.	N/A

7.20 Plan Objective 6 scored a mixture of neutral, positives and significantly positive scores. No mitigation / enhancements were identified.

7.21 PO7 Improving life-chances and the health and well-being of our residents and local communities by:

- facilitating new health and well-being facilities and encouraging local and accessible health and well-being services;
- encouraging the creation of community food gardens in new and existing communities;
- supporting the provision of new modern school buildings that enhance learning and contribute to improved outcomes for children and young people;
- promoting community cohesion and encouraging integration, including supporting and protecting new and existing community facilities;
- reducing crime and fear of crime and promoting community safety, through good design of the built environment;
- creating healthier and more vibrant neighbourhoods (including a mix of uses and green spaces) that are walkable and well-connected to existing communities, where infrastructure and services exist or are planned; and
- improving air quality to benefit the health of the borough's residents and visitors.

7.22 The IA appraisal of Plan Objective 7 is set out below.

IA appraisal of Plan Objective 7

IA Objective	Plan Objective 7	Justification	Mitigation / enhancements	Changes made to plan objective as a result of IA
To protect, conserve and enhance a high quality multifunctional green infrastructure network, including biodiversity and geodiversity that is ecologically connected	++ / ?	<p>The plan objective will help achieve this by encouraging the creation of community food gardens in new and existing communities and creating healthier and more vibrant neighbourhoods (including a mix of uses and green spaces) that are walkable and well-connected to existing communities.</p> <p>Plan Objective has been screened in by HRA. Further screening will be carried out as the Local Plan is developed.</p>	N/A. Covered by plan objective 5.	N/A
To promote quality and accessible open spaces	++	The plan objectives helps achieve this by encouraging the creation of community food gardens in new and existing communities and	N/A. Covered by plan objective 5.	N/A

IA Objective	Plan Objective 7	Justification	Mitigation / enhancements	Changes made to plan objective as a result of IA
		creating healthier and more vibrant neighbourhoods (including a mix of uses and green spaces) that are walkable and well-connected to existing communities.		
To protect and enhance the character and appearance of landscapes and townscapes, maintaining and strengthening local distinctiveness and sense of place	+	The plan objective helps achieve this by reducing crime and fear of crime and promoting community safety, through good design of the built environment.	N/A. Covered by plan objective 5.	N/A
To protect, conserve and enhance the historic environment, heritage assets and their setting	--	No specific reference.	N/A. Covered by plan objective 8.	N/A
To promote high quality, beautiful design that meets local design expectations	+	The plan objective helps achieve this by reducing crime and fear of crime and promoting community safety, through good design of the built environment; creating healthier and more vibrant neighbourhoods (including a mix of uses and green spaces) that are walkable and well-connected to existing communities.	N/A. Covered by plan objective 8.	N/A
To ensure land and buildings are used in an effective and efficient manner, maximising the use of brownfield land	--	No specific reference although plan objective seeks to encourage the creation of community food gardens in new and existing communities.	N/A	N/A

IA Objective	Plan Objective 7	Justification	Mitigation / enhancements	Changes made to plan objective as a result of IA
To ensure appropriate provision of supporting infrastructure to meet development needs	++	The plan objective will contribute towards this IA objective through facilitating health and well being facilities, community food gardens and new school buildings.	N/A. Covered by plan objectives 5, 7 and 9.	N/A
To improve health and well-being and reduce health inequalities	++	The plan objective helps achieve this through facilitating health and well-being facilities, community food gardens; creating healthier and more vibrant neighbourhoods (including a mix of uses and green spaces) that are walkable and well-connected to existing communities and improving air quality to benefit the health of the borough's residents and visitors.	N/A	N/A
To minimise and mitigate against flood risk and adapt to the effects of flood risk	--	No specific reference.	N/A. Covered by plan objective 6.	N/A
To protect and improve the quality of water bodies and river corridors and availability of water resources	--	No specific reference.	N/A. Covered by plan objective 6.	N/A
To protect and improve soil quality, best and most versatile agricultural land, and remediate contaminated land	--	Plan objective seeks to provide green spaces and community food gardens. However, it is felt that the objective is neutral.	N/A. Covered by plan objective 5.	N/A
To minimise energy use, promote energy efficiency and the use of renewable and low carbon energy	--	No specific reference.	N/A. Covered by plan objective 6.	N/A

IA Objective	Plan Objective 7	Justification	Mitigation / enhancements	Changes made to plan objective as a result of IA
To ensure communities and infrastructure are resilient to the effects of climate change	+	The plan objective helps to achieve this by creating healthier and more vibrant neighbourhoods (including a mix of uses and green spaces) that are walkable and well-connected to existing communities and through encouraging the creation of community food gardens in new and existing communities.	N/A. Covered by plan objective 6.	N/A
To protect and improve air quality	++	Plan objective seeks to improve air quality to benefit the health of the borough's residents and visitors.	N/A. Covered by plan objective 9.	N/A
To protect and improve local environmental quality	++	Plan objectives will help achieve by reducing crime and fear of crime and promoting community safety, through good design of the built environment, encouraging the creation of community food gardens, creating healthier and more vibrant neighbourhoods (including a mix of uses and green spaces) that are walkable and well-connected to existing communities, improving air quality to benefit the health of the borough's residents and visitors; and supporting accessible health and well-being services.	N/A	N/A
To promote an integrated and improved transport system that provides sustainable transport choices and improves connectivity, including the walking and cycling	+	The plan objective will help achieve this by creating healthier and more vibrant neighbourhoods (including a mix of uses and green spaces) that are walkable and well-connected to existing communities.	N/A. Covered by plan objective 9.	N/A

IA Objective	Plan Objective 7	Justification	Mitigation / enhancements	Changes made to plan objective as a result of IA
network and the protection of the PROW Network				
To promote accessibility to key services and reduce the need to travel	++	The plan objective will help achieve this through provision of accessible health and well-being services, new modern schools; and neighbourhoods that have a mix of uses and green spaces that are walkable and well connected.	N/A	N/A
To promote regeneration and reduce levels of deprivation and disparity	+	The plan objective helps meet this through facilitating health and well-being facilities, encouraging community food gardens, supporting provision of new modern school buildings, promoting community cohesion, reducing fear of crime and creating healthier and vibrant neighbourhoods.	N/A	N/A
To promote sustainable economic growth and job creation	--	No specific reference.	N/A. Covered by plan objective 3.	N/A
To protect and enhance the vitality and viability of Oldham Town Centre and the centres of Chadderton, Failsworth, Hill Stores, Lees, Royton, Shaw and Uppermill	+	<p>The plan objective will help achieve this by reducing crime and fear of crime and promoting community safety, through good design of the built environment; creating healthier and more vibrant neighbourhoods (including a mix of uses and green spaces) that are walkable and well-connected to existing communities.</p> <p>This is applicable to centres.</p>	N/A	N/A

IA Objective	Plan Objective 7	Justification	Mitigation / enhancements	Changes made to plan objective as a result of IA
To promote sustainable tourism and leisure	--	No specific link.	N/A. Covered by plan objectives 3, 4 and 5.	N/A
To improve education attainment and skill levels	++	The plan objective will achieve this by supporting the provision of new modern school buildings that enhance learning and contribute to improved outcomes for children and young people.	N/A	N/A
To provide a sustainable housing land supply and an appropriate mix of sizes, types and tenures to meet local housing needs	--	No specific link.	N/A. Covered by plan objective 1.	N/A
To ensure the prudent use and sustainable management of minerals	--	No specific link.	N/A. GM Minerals Plan addresses.	N/A
To manage waste sustainably in line with the waste hierarchy	--	No specific link.	N/A. GM Waste Plan addresses.	N/A
To promote mixed, balanced and inclusive sustainable communities	++	The plan objective will help achieve this by promoting community cohesion and encouraging integration, including supporting and protecting new and existing community facilities; reducing crime and fear of crime and promoting community safety, through good design of the built environment; creating healthier and more vibrant neighbourhoods (including a mix of uses and green spaces) that are walkable and well-connected to existing communities.	N/A	N/A

7.23 Plan Objective 7 scored a mixture of neutral, positives and significantly positive scores. It scored a uncertain as it was screened in by the HRA and must be subject to further screening as the Local Plan is developed.

7.24 PO8 Improving and valuing a better environment, including the borough's historic environment, by:

- protecting people's amenity and local environmental quality;
- maximising opportunities for the conservation and enhancement of the historic environment and heritage assets ensuring that a positive framework for heritage derives from the overall strategy for Oldham and the wider plan objectives;
- ensuring that development responds positively to the local character, townscape and distinctiveness of the different communities within Oldham, taking into account any conservation area management plans and design codes;
- ensuring that proposals within Oldham Town Centre follows the recommendations set out in the Oldham Town Centre Conservation Area Management Plan with the aim of removing the Conservation Area from the at risk register;
- seeking to identify, protect and enhance non-designated heritage assets that are worth inclusion on a local list; and
- developing "The Oldham Code" to ensure that the places and spaces of Oldham are of a high quality, promote beauty in the built environment, whilst protecting heritage assets and ensure that people can lead healthy and active lifestyles.

7.25 The IA appraisal of Plan Objective 8 is set out below.

IA appraisal of Plan Objective 8

IA Objective	Plan Objective 8	Justification	Mitigation / enhancements	Changes made to plan objective as a result of the IA
To protect, conserve and enhance a high quality multifunctional green infrastructure network, including biodiversity and geodiversity that is ecologically connected	+	The plan objective will help achieve this by committing to develop "The Oldham Code" to ensure that the places and spaces of Oldham are of a high quality, promote beauty in the built environment. This should include green infrastructure.	N/A. Covered by plan objective 5.	N/A
To promote quality and accessible open spaces	+	The plan objective will help achieve this by committing to develop "The Oldham Code" to ensure that the places and spaces of Oldham are of a high quality, promote beauty in the built environment. This should include open space.	N/A. Covered by plan objective 5.	N/A
To protect and enhance the character and appearance of	++	The plan objective achieves this by ensuring that development responds positively to the local	N/A	N/A

IA Objective	Plan Objective 8	Justification	Mitigation / enhancements	Changes made to plan objective as a result of the IA
landscapes and townscapes, maintaining and strengthening local distinctiveness and sense of place		character, townscape and distinctiveness of the different communities within Oldham.		
To protect, conserve and enhance the historic environment, heritage assets and their setting	++	Plan objective 8 seeks to achieve this.	N/A	N/A
To promote high quality, beautiful design that meets local design expectations	++	The plan objective will achieve this through being committing to develop "The Oldham Code" to ensure that the places and spaces of Oldham are of a high quality, promote beauty in the built environment, whilst protecting heritage assets and ensure that people can lead healthy and active lifestyles.	N/A	N/A
To ensure land and buildings are used in an effective and efficient manner, maximising the use of brownfield land	+	The plan objective will help achieve this as it seeks to maximise opportunities for the enhancement of heritage assets. This will ensure the use of brownfield land.	N/A	N/A
To ensure appropriate provision of supporting infrastructure to meet development needs	--	No specific reference.	N/A. Covered by plan objective 5, 6 and 9.	N/A
To improve health and well-being and reduce health inequalities	+	The plan objective will help achieve this by being committing to developing "The Oldham Code" to ensure that people can lead healthy and active lifestyles.	N/A.	N/A

IA Objective	Plan Objective 8	Justification	Mitigation / enhancements	Changes made to plan objective as a result of the IA
		There is also a link between the historic environment and well-being.		
To minimise and mitigate against flood risk and adapt to the effects of flood risk	+	The plan objective will help achieve this by protecting local environmental quality and being committed to developing the Oldham Code.	N/A. Covered by plan objective 6.	N/A
To protect and improve the quality of water bodies and river corridors and availability of water resources	--	No specific reference.	N/A. Covered by plan objective 6.	N/A
To protect and improve soil quality, best and most versatile agricultural land, and remediate contaminated land	+	Indirectly the plan objective will help achieve this through ensuring the sustainable use of heritage assets such as mills as this reduces pressure on greenfield land and therefore soil and agricultural land etc.	N/A	N/A
To minimise energy use, promote energy efficiency and the use of renewable and low carbon energy	+	The plan objective helps to achieve this as it is committed to the development of the Oldham Code which is likely to address energy efficiency.	N/A. Covered by plan objective 6.	N/A
To ensure communities and infrastructure are resilient to the effects of climate change	+	The plan objective will help achieve this by protecting people's amenity and local environmental quality and through committing to preparing the Oldham Code.	N/A. Covered by plan objective 6.	N/A
To protect and improve air quality	+	The plan objective will help achieve this by protecting people's amenity and local environmental quality and through committing to preparing the Oldham Code.	N/A. Covered by plan objective 9.	N/A

IA Objective	Plan Objective 8	Justification	Mitigation / enhancements	Changes made to plan objective as a result of the IA
To protect and improve local environmental quality	++	The plan objective seeks to protect people's amenity and local environmental quality.	N/A	N/A
To promote an integrated and improved transport system that provides sustainable transport choices and improves connectivity, including the walking and cycling network and the protection of the PROW Network	--	The plan objective commits to preparing the Oldham Code however it is felt that the impact will be neutral.	N/A. Covered by plan objective 9.	N/A
To promote accessibility to key services and reduce the need to travel	--	No specific reference.	N/A. Covered by plan objective 9.	N/A
To promote regeneration and reduce levels of deprivation and disparity	+	The plan objective helps to achieve this by maximising opportunities for the conservation and enhancement of the historic environment and heritage assets; and in committing to the preparation of the Oldham Code. This will help promote regeneration.	N/A	N/A
To promote sustainable economic growth and job creation	+	The plan objective helps achieve this by maximising opportunities for the conservation and enhancement of the historic environment and heritage assets ensuring that a positive framework for heritage derives from the overall strategy for Oldham and the wider plan objectives; and being committing to developing the Oldham Code to enable the	N/A	N/A

IA Objective	Plan Objective 8	Justification	Mitigation / enhancements	Changes made to plan objective as a result of the IA
		creation of attractive places, which will help generate economic growth.		
To protect and enhance the vitality and viability of Oldham Town Centre and the centres of Chadderton, Failsworth, Hill Stores, Lees, Royton, Shaw and Uppermill	++	The plan objective seeks to do this through creating attractive, well designed centres and removing Oldham Town Centre from the heritage at-risk register.	N/A	N/A
To promote sustainable tourism and leisure	+	The plan objective helps achieve this through creating well designed places, which will help to promote sustainable tourism. In addition, the sustainable use of heritage assets may also be used for tourism and leisure related uses.	N/A	N/A
To improve education attainment and skill levels	--	No specific reference.	N/A. Covered by plan objective 2.	N/A
To provide a sustainable housing land supply and an appropriate mix of sizes, types and tenures to meet local housing needs	+	The plan objective helps achieve this by maximising opportunities for the conservation and enhancement of the historic environment and heritage assets ensuring that a positive framework for heritage derives from the overall strategy for Oldham and the wider plan objectives. Heritage assets may form part of the housing land supply.	N/A. Also covered by plan objective 1.	N/A
To ensure the prudent use and sustainable management of minerals	--	No specific link. Although the re-use of heritage assets will reduce pressure for further minerals.	N/A. GM Minerals Plan addresses.	N/A

IA Objective	Plan Objective 8	Justification	Mitigation / enhancements	Changes made to plan objective as a result of the IA
To manage waste sustainably in line with the waste hierarchy	+	An assumption is made that the Oldham Code would reflect the waste hierarchy.	N/A. GM Waste Plan addresses.	N/A
To promote mixed, balanced and inclusive sustainable communities	--	No specific reference. Although the reuse of heritage assets will help to create sustainable communities.	N/A.	N/A

7.26 Plan Objective 8 scored a mixture of neutral, positives and significantly positive scores. No mitigation / enhancements were identified.

7.27 PO9 Ensuring our residents and workforce have fit for purpose, modern connectivity by:

- reducing the need to travel and promoting accessible and sustainable transport choices such as walking, cycling and use of public transport rather than people relying on the car;
- embedding the Streets for All guidance and promoting the growth of the Bee Network to promote sustainable transport choices; and
- ensuring new development is located in areas with access to local services, with higher density development created around local transport hubs, in order to take advantage of their higher levels of connectivity.

7.28 The IA appraisal of Plan Objective 9 is set out below.

IA appraisal of Plan Objective 9

IA Objective	Plan Objective 9	Justification	Mitigation / enhancements	Changes made to plan objective as a result of the IA
To protect, conserve and enhance a high quality multifunctional green infrastructure network, including biodiversity and geodiversity that is ecologically connected	+	The plan objective helps achieve this by promoting accessible and sustainable transport choices such as walking and cycling; and embedding the Streets for All guidance and promoting the growth of the Bee Network to promote sustainable transport choices. This can include the Green Infrastructure network.	N/A. Covered by plan objective 5.	N/A
To promote quality and accessible open spaces	--	No specific reference.	N/A. Covered by plan objective 5.	N/A
To protect and enhance the character and appearance of landscapes and townscapes, maintaining and strengthening local distinctiveness and sense of place	--	No specific reference.	N/A. Covered by plan objective 8.	N/A
To protect, conserve and enhance the historic environment, heritage assets and their setting	--	No specific reference.	N/A. Covered by plan objective 8.	N/A

IA Objective	Plan Objective 9	Justification	Mitigation / enhancements	Changes made to plan objective as a result of the IA
To promote high quality, beautiful design that meets local design expectations	+	The plan objective will help achieve this by embedding the Streets for All guidance and promoting the growth of the Bee Network to promote sustainable transport choices. This will consider public realm.	N/A	N/A
To ensure land and buildings are used in an effective and efficient manner, maximising the use of brownfield land	+	The plan objective will help achieve this by ensuring new development is located in areas with access to local services, with higher density development created around local transport hubs, in order to take advantage of their higher levels of connectivity.	N/A	N/A
To ensure appropriate provision of supporting infrastructure to meet development needs	+	The plan objective seeks to ensure that development is serviced by the public transport network including walking and cycling.	N/A	N/A
To improve health and well-being and reduce health inequalities	++	Promoting accessible and sustainable transport choices will help to improve health and well being.	N/A	N/A
To minimise and mitigate against flood risk and adapt to the effects of flood risk	--	No specific reference.	N/A. Covered by plan objective 6.	N/A
To protect and improve the quality of water bodies and river corridors and availability of water resources	--	No specific reference.	N/A. Covered by plan objective 6.	N/A
To protect and improve soil quality, best and most versatile	+	Indirectly the plan objective will help achieve this through ensuring new development is located in areas with access to	N/A	N/A

IA Objective	Plan Objective 9	Justification	Mitigation / enhancements	Changes made to plan objective as a result of the IA
agricultural land, and remediate contaminated land		local services, with higher density development created around local transport hubs, in order to take advantage of their higher levels of connectivity; and this reduces pressure on greenfield land and therefore soil and agricultural land.		
To minimise energy use, promote energy efficiency and the use of renewable and low carbon energy	--	No specific reference.	N/A. Covered by plan objective 6.	N/A
To ensure communities and infrastructure are resilient to the effects of climate change	+	The plan objective will help achieve this by embedding Streets for All, focussing high density development around transport hubs and reducing the need to travel.	N/A. Also covered by plan objective 6.	N/A
To protect and improve air quality	++	The plan objective will help achieve this by reducing the need to travel and promoting accessible and sustainable transport choices such as walking, cycling and use of public transport rather than people relying on the car.	N/A. Also covered by plan objective 9.	N/A
To protect and improve local environmental quality	--	No specific reference.	N/A. Covered by plan objective 8.	N/A
To promote an integrated and improved transport system that provides sustainable transport choices and improves connectivity, including the walking and cycling	++	The plan objective will help achieve this by reducing the need to travel and promoting accessible and sustainable transport choices such as walking, cycling and use of public transport rather than people relying on the car; and through embedding the Streets	N/A	N/A

IA Objective	Plan Objective 9	Justification	Mitigation / enhancements	Changes made to plan objective as a result of the IA
network and the protection of the PROW Network		for All guidance and promoting the growth of the Bee Network to promote sustainable transport choices.		
To promote accessibility to key services and reduce the need to travel	++	The plan objective helps achieve this by reducing the need to travel and promoting accessible and sustainable transport choices such as walking, cycling and use of public transport rather than people relying on the car; and ensuring new development is located in areas with access to local services, with higher density development created around local transport hubs, in order to take advantage of their higher levels of connectivity.	N/A	N/A
To promote regeneration and reduce levels of deprivation and disparity	+	The plan objective helps achieve this by ensuring new development is located in areas with access to local services, with higher density development created around local transport hubs, in order to take advantage of their higher levels of connectivity. This should help people to access employment and other services.	N/A	N/A
To promote sustainable economic growth and job creation	+	The plan objective will help achieve this by ensuring new development is located in areas with access to local services, with higher density development created around local transport hubs, in order to take advantage of their higher levels of connectivity. This will help ensure sustainable access to jobs.	N/A	N/A

IA Objective	Plan Objective 9	Justification	Mitigation / enhancements	Changes made to plan objective as a result of the IA
To protect and enhance the vitality and viability of Oldham Town Centre and the centres of Chadderton, Failsworth, Hill Stores, Lees, Royton, Shaw and Uppermill	+	The plan objective helps achieve this by ensuring new development is located in areas with access to local services, with higher density development created around local transport hubs, in order to take advantage of their higher levels of connectivity and embedding the Streets for All guidance and promoting the growth of the Bee Network to promote sustainable transport choices. This would include centres.	N/A	N/A
To promote sustainable tourism and leisure	+	Encouraging sustainable transport choices will support sustainable tourism and leisure.	N/A	N/A
To improve education attainment and skill levels	--	No specific reference.	N/A. Covered by plan objective 2.	N/A
To provide a sustainable housing land supply and an appropriate mix of sizes, types and tenures to meet local housing needs	+	Ensuring new development is located in areas with access to local services, with higher density development created around local transport hubs, in order to take advantage of their higher levels of connectivity.	N/A. Covered by plan objective 1.	N/A
To ensure the prudent use and sustainable management of minerals	+	Indirectly higher densities will help to reduce pressure from Green Belt and therefore areas of search of for minerals in the long term.	N/A. GM Minerals Plan addresses.	N/A
To manage waste sustainably in line with the waste hierarchy	--	No specific link.	N/A. GM Waste Plan addresses.	N/A

IA Objective	Plan Objective 9	Justification	Mitigation / enhancements	Changes made to plan objective as a result of the IA
To promote mixed, balanced and inclusive sustainable communities	--	Improving sustainable transport choices, connectivity and well-designed streets will help to provide inclusive sustainable communities.	N/A	N/A

7.29 Plan Objective 9 scored a mixture of neutral, positives and significantly positive scores. No mitigation / enhancements were identified.

8 Appraisal of Spatial Options

- 8.1** The following IA tables shows the appraisal carried out on spatial options in the Issues and Options Local Plan. The scores are considered the same for short to long term at this stage. The appraisal also has identified direct and secondary (indirect effects).

Affordable Housing

- 8.2** The IA of the affordable housing spatial options is set out below.
- 8.3** Affordable Housing Option A: Should an affordable housing requirement be applied borough-wide?

IA appraisal of Affordable Housing Option A

IA Objective	Affordable Housing Option A	Justification	Mitigation / enhancement	Changes made to option a as a result of IA
To protect, conserve and enhance a high quality multifunctional green infrastructure network, including biodiversity and geodiversity that is ecologically connected	--	No link.	Green Infrastructure section of the plan covers this.	N/A
To promote quality and accessible open spaces	--	No link.	Green Infrastructure section of the plan covers this.	N/A
To protect and enhance the character and appearance of landscapes and townscapes, maintaining and strengthening local distinctiveness and sense of place	--	No link.	Green Infrastructure and built environment sections of the plan cover this.	N/A
To protect, conserve and enhance the historic environment, heritage assets and their setting	--	No link.	Green Infrastructure and built environment sections of the plan cover this.	N/A
To promote high quality, beautiful design that meets local design expectations	--	No link. All housing should be high quality.	The built environment section of the plan covers this.	N/A

IA Objective	Affordable Housing Option A	Justification	Mitigation / enhancement	Changes made to option a as a result of IA
To ensure land and buildings are used in an effective and efficient manner, maximising the use of brownfield land	--	No link.	Other parts of the plan address this, such as the homes section.	N/A
To ensure appropriate provision of supporting infrastructure to meet development needs	--	No link. Affordable housing is not considered to meet the definition of infrastructure.	Sections of the Local Plan review such as Green Infrastructure and communities cover this.	N/A
To improve health and well-being and reduce health inequalities	+	<p>Indirect impacts:</p> <p>Providing affordable homes will ensure that people have disposable income to live healthy lives.</p> <p>Ensuring residents have a home will help foster mental well being.</p> <p>It is assumed affordable homes will be energy efficient and therefore this may reduce the number of people in cold / damp homes and reduce health related impacts.</p> <p>Having a mix of sizes of affordable homes will help to reduce overcrowding and associated health impacts.</p>	N/A	N/A

IA Objective	Affordable Housing Option A	Justification	Mitigation / enhancement	Changes made to option a as a result of IA
		This would be applicable across the borough.		
To minimise and mitigate against flood risk and adapt to the effects of flood risk	--	No link.	This is covered in the climate change section of the plan.	N/A
To protect and improve the quality of water bodies and river corridors and availability of water resources	--	No link.	This is covered in the climate change section of the plan.	N/A
To protect and improve soil quality, best and most versatile agricultural land, and remediate contaminated land	--	No link.	This is covered in the Green Infrastructure section of the plan.	N/A
To minimise energy use, promote energy efficiency and the use of renewable and low carbon energy	--	No link. All affordable housing will be expected to meet energy efficiency requirements.	This is covered in the climate change section of the plan.	N/A
To ensure communities and infrastructure are resilient to the effects of climate change	--	No link.	This is covered in the Green Infrastructure and climate change sections of the plan.	N/A
To protect and improve air quality	--	No link.	This is covered in the Green Infrastructure, climate change, transport and infrastructure sections of the plan.	N/A
To protect and improve local environmental quality	--	No link.	This is covered in the communities section of the plan.	N/A

IA Objective	Affordable Housing Option A	Justification	Mitigation / enhancement	Changes made to option a as a result of IA
To promote an integrated and improved transport system that provides sustainable transport choices and improves connectivity, including the walking and cycling network and the protection of the PROW Network	--	No link.	This is covered in the transport, Green Infrastructure and communities section of the plan.	N/A
To promote accessibility to key services and reduce the need to travel	--	No link. Affordable housing should be located in sustainable locations.	This is covered in the transport section of the plan.	N/A
To promote regeneration and reduce levels of deprivation and disparity	+	Ensuring affordable housing is provided across the borough will help address deprivation and disparity. However, a blanket approach may not meet specific needs within localised parts of the borough.	N/A	N/A
To promote sustainable economic growth and job creation	+	Ensuring affordable housing provision across the borough may indirectly have positive economic growth impacts through attracting people to the area that may not otherwise be able to afford a home. This may increase	N/A. The economy and employment section of the plan addresses this.	N/A

IA Objective	Affordable Housing Option A	Justification	Mitigation / enhancement	Changes made to option a as a result of IA
		spending in the area and indirect job creation.		
To protect and enhance the vitality and viability of Oldham Town Centre and the centres of Chadderton, Failsworth, Hill Stores, Lees, Royton, Shaw and Uppermill	+	Ensuring housing provision within centres, including affordable housing will help create vibrant centres as residents spend time and money within the centres.	N/A	N/A
To promote sustainable tourism and leisure	--	No link.	This is covered in the employment, centres, Green Infrastructure and communities sections of the plan.	N/A
To improve education attainment and skill levels	--	No link.	This is covered in the communities sections of the plan.	N/A
To provide a sustainable housing land supply and an appropriate mix of sizes, types and tenures to meet local housing needs	++	Having a borough wide approach to affordable housing requirements will ensure an appropriate mix of tenures across the borough.	N/A	N/A
To ensure the prudent use and sustainable management of minerals	--	No link.	The GM Minerals Plan covers this.	N/A
To manage waste sustainably in line with the waste hierarchy	--	No link.	The GM Waste Plan covers this.	N/A
To promote mixed, balanced and inclusive sustainable communities	++	Having a borough wide approach to affordable housing requirements will ensure inclusive	N/A. Other sections of the plan, such as the built environment cover this.	N/A

IA Objective	Affordable Housing Option A	Justification	Mitigation / enhancement	Changes made to option a as a result of IA
		communities exist across the borough.		

8.4 Affordable Housing Option B: Should there be a different affordable housing requirement for different parts of the borough, depending on their need? If yes, are there any areas in particular where a different approach to the provision of affordable housing is needed?

IA appraisal of Affordable Housing Option B

IA Objective	Affordable Housing Option B	Justification	Mitigation / enhancement	Changes made to option a as a result of IA
To protect, conserve and enhance a high quality multifunctional green infrastructure network, including biodiversity and geodiversity that is ecologically connected	--	No link.	Green Infrastructure section of the plan covers this.	N/A
To promote quality and accessible open spaces	--	No link.	Green Infrastructure section of the plan covers this.	N/A
To protect and enhance the character and appearance of landscapes and townscapes, maintaining and strengthening local distinctiveness and sense of place	--	No link.	Green Infrastructure and built environment sections of the plan cover this.	N/A
To protect, conserve and enhance the historic environment, heritage assets and their setting	--	No link.	Green Infrastructure and built environment sections of the plan cover this.	N/A
To promote high quality, beautiful design that meets local design expectations	--	No link. All housing should be high quality.	The built environment section of the plan covers this.	N/A
To ensure land and buildings are used in an effective and efficient manner, maximising the use of brownfield land	--	No link.	Other parts of the plan address this, such as the homes section.	N/A

IA Objective	Affordable Housing Option B	Justification	Mitigation / enhancement	Changes made to option a as a result of IA
To ensure appropriate provision of supporting infrastructure to meet development needs	--	No link. Affordable housing is not considered to meet the definition of infrastructure.	Sections of the Local Plan review such as Green Infrastructure and communities cover this.	N/A
To improve health and well-being and reduce health inequalities	++	<p>Indirect impacts:</p> <p>Providing affordable homes will ensure that people have disposable income to live healthy lives.</p> <p>Ensuring residents have a home will help foster mental well being.</p> <p>It is assumed affordable homes will be energy efficient and therefore this may reduce the number of people in cold / damp homes and reduce health related impacts.</p> <p>Having a mix of sizes of affordable homes will help to reduce overcrowding and associated health impacts.</p> <p>It is considered that by having a targeted approach this may focus on areas of deprivation and therefore poor health. Providing homes to meet particular needs should help address issues of poverty and</p>	N/A	N/A

IA Objective	Affordable Housing Option B	Justification	Mitigation / enhancement	Changes made to option a as a result of IA
		overcrowding all of which relate to health and well-being.		
To minimise and mitigate against flood risk and adapt to the effects of flood risk	--	No link.	This is covered in the climate change section of the plan.	N/A
To protect and improve the quality of water bodies and river corridors and availability of water resources	--	No link.	This is covered in the climate change section of the plan.	N/A
To protect and improve soil quality, best and most versatile agricultural land, and remediate contaminated land	--	No link.	This is covered in the Green Infrastructure section of the plan.	N/A
To minimise energy use, promote energy efficiency and the use of renewable and low carbon energy	--	No link. All affordable housing will be expected to meet energy efficiency requirements.	This is covered in the climate change section of the plan.	N/A
To ensure communities and infrastructure are resilient to the effects of climate change	--	No link.	This is covered in the Green Infrastructure and climate change sections of the plan.	N/A
To protect and improve air quality	--	No link.	This is covered in the Green Infrastructure, climate change, transport and infrastructure sections of the plan.	N/A

IA Objective	Affordable Housing Option B	Justification	Mitigation / enhancement	Changes made to option a as a result of IA
To protect and improve local environmental quality	--	No link.	This is covered in the communities section of the plan.	N/A
To promote an integrated and improved transport system that provides sustainable transport choices and improves connectivity, including the walking and cycling network and the protection of the PROW Network	--	No link.	This is covered in the transport, green infrastructure and communities section of the plan.	N/A
To promote accessibility to key services and reduce the need to travel	--	No link. Affordable housing should be located in sustainable locations.	This is covered in the transport section of the plan.	N/A
To promote regeneration and reduce levels of deprivation and disparity	++	It is considered that by having a targeted approach this may focus on areas of regeneration, deprivation and disparity. Providing homes to meet particular needs in certain parts of the borough should help address issues of deprivation and overcrowding where it is needed most, helping to reduce the gap between the most and least deprived areas of the borough.	N/A	N/A
To promote sustainable economic growth and job creation	+	Ensuring affordable housing provision across the borough may indirectly have positive economic growth impacts through attracting people to the area that may not	N/A. The economy and employment section of the plan addresses this.	N/A

IA Objective	Affordable Housing Option B	Justification	Mitigation / enhancement	Changes made to option a as a result of IA
		otherwise be able to afford a home. This may increase spending in the area and indirect job creation.		
To protect and enhance the vitality and viability of Oldham Town Centre and the centres of Chadderton, Failsworth, Hill Stores, Lees, Royton, Shaw and Uppermill	+	Ensuring housing provision within centres, including affordable housing will help create vibrant centres as residents spend time and money within the centres. The extent of the positive impact would depend on the need within centres.	N/A	N/A
To promote sustainable tourism and leisure	--	No link.	This is covered in the employment, centres, Green Infrastructure and communities sections of the plan.	N/A
To improve education attainment and skill levels	--	No link.	This is covered in the communities sections of the plan.	N/A
To provide a sustainable housing land supply and an appropriate mix of sizes, types and tenures to meet local housing needs	++	Having a targeted approach would ensure that the right requirement is applied to specific parts of the borough, rather than a blanket approach.	N/A	N/A
To ensure the prudent use and sustainable management of minerals	--	No link.	The GM Minerals Plan covers this.	N/A
To manage waste sustainably in line with the waste hierarchy	--	No link.	The GM Waste Plan covers this.	N/A

IA Objective	Affordable Housing Option B	Justification	Mitigation / enhancement	Changes made to option a as a result of IA
To promote mixed, balanced and inclusive sustainable communities	++	Having a targeted approach to affordable housing will ensure inclusive communities exist across the borough where specific housing needs have been met.	N/A. Other sections of the plan, such as the built environment also cover this.	N/A

Outcome:

- 8.5** Spatial Option B (targeted approach to affordable housing) results in more positive outcomes overall than Spatial Option A (boroughwide approach).

Homes in Multiple Occupation

8.6 The IA of the Homes in Multiple Occupation (HMO) spatial options is set out below.

8.7 HMO Option A: If there is found to be a concentration of HMOs within a particular area, would you agree with the introduction of a Article 4 direction to remove permitted development rights for HMOs in specific areas, as necessary?

IA appraisal of Homes in Multiple Occupation Option A

IA Objective	HMO Spatial Option A	Justification	Mitigation / enhancement	Changes made to option a as a result of IA
To protect, conserve and enhance a high quality multifunctional green infrastructure network, including biodiversity and geodiversity that is ecologically connected	--	No link. HMO's traditionally involve the conversion of existing buildings.	Green Infrastructure section of the plan covers this.	N/A
To promote quality and accessible open spaces	--	No link. HMO's traditionally involve the conversion of existing buildings.	Green Infrastructure section of the plan covers this.	N/A
To protect and enhance the character and appearance of landscapes and townscape, maintaining and strengthening local distinctiveness and sense of place	--	No link. HMO's traditionally involve the conversion of existing buildings.	Green Infrastructure and Built Environment sections of the plan cover this.	N/A
To protect, conserve and enhance the historic environment, heritage assets and their setting	--	No link. HMO's traditionally involve the conversion of existing buildings.	Green Infrastructure and built environment sections of the plan cover this.	N/A
To promote high quality, beautiful design that meets local design expectations	--	No link. All housing should be high quality.	The built environment section of the plan covers this.	N/A
To ensure land and buildings are used in an effective and efficient manner, maximising the use of brownfield land	+	By asking developers to apply for planning permission for the development of HMOs in locations where there is a concentration of them will	Other parts of the plan address this, such as the homes section.	N/A

IA Objective	HMO Spatial Option A	Justification	Mitigation / enhancement	Changes made to option a as a result of IA
		mean that the land and buildings in that area are being put the most appropriate use for that area.		
To ensure appropriate provision of supporting infrastructure to meet development needs	--	No link.	Sections of the Local Plan review such as Green Infrastructure and communities cover this.	N/A
To improve health and well-being and reduce health inequalities	+	If applicants for HMOs have to apply for planning permission in certain areas where there is a concentration of them it means that as part of the planning application process issues such as housing standards, local environment and amenity and concentration can be considered as part of the application process. These issues link to health and well being so there will be an improvement.	N/A	N/A
To minimise and mitigate against flood risk and adapt to the effects of flood risk	--	No link.	This is covered in the climate change section of the plan.	N/A
To protect and improve the quality of water bodies and river corridors and availability of water resources	--	No link.	This is covered in the climate change section of the plan.	N/A
To protect and improve soil quality, best and most versatile agricultural land, and remediate contaminated land	--	No link.	This is covered in the Green Infrastructure section of the plan.	N/A

IA Objective	HMO Spatial Option A	Justification	Mitigation / enhancement	Changes made to option a as a result of IA
To minimise energy use, promote energy efficiency and the use of renewable and low carbon energy	--	No link.	This is covered in the climate change section of the plan.	N/A
To ensure communities and infrastructure are resilient to the effects of climate change	--	No link.	This is covered in the Green Infrastructure and climate change sections of the plan.	N/A
To protect and improve air quality	--	No link.	This is covered in the Green Infrastructure, climate change, transport and infrastructure sections of the plan.	N/A
To protect and improve local environmental quality	+	If applicants for HMOs have to apply for planning permission in certain areas where there are concentrations it means that as part of the planning application process issues such as housing standards, local environment and amenity and concentration can be considered as part of the application process.	This is also covered in the communities section of the plan.	N/A
To promote an integrated and improved transport system that provides sustainable transport choices and improves connectivity, including the walking and cycling network and the protection of the PROW Network	--	No link.	This is covered in the transport, Green Infrastructure and communities section of the plan.	N/A
To promote accessibility to key services and reduce the need to travel	--	No link.	This is covered in the transport section of the plan.	N/A

IA Objective	HMO Spatial Option A	Justification	Mitigation / enhancement	Changes made to option a as a result of IA
To promote regeneration and reduce levels of deprivation and disparity	+	<p>If applicants for HMOs have to apply for planning permission in certain areas where there is an concentration it means that as part of the planning process issues such as housing standards, local environment and amenity and concentration can be considered as part of the application process.</p> <p>These issues can help reduce deprivation and disparity.</p>	N/A	N/A
To promote sustainable economic growth and job creation	--	No link.	N/A. The economy and employment section of the plan addresses this.	N/A
To protect and enhance the vitality and viability of Oldham Town Centre and the centres of Chadderton, Failsworth, Hill Stores, Lees, Royton, Shaw and Uppermill	--	No link.	N/A. This is covered in the centres section of the plan.	N/A
To promote sustainable tourism and leisure	--	No link.	This is covered in the employment, centres, Green Infrastructure and communities sections of the plan.	N/A
To improve education attainment and skill levels	--	No link.	This is covered in the communities sections of the plan.	N/A

IA Objective	HMO Spatial Option A	Justification	Mitigation / enhancement	Changes made to option a as a result of IA
To provide a sustainable housing land supply and an appropriate mix of sizes, types and tenures to meet local housing needs	+	If applicants for HMOs have to apply for planning permission in certain areas of concentration it means that as part of the planning process issues such as housing standards, local environment and amenity and concentration can be considered as part of the application process. This will help ensure an appropriate mix and tenure of housing in those areas.	N/A	N/A
To ensure the prudent use and sustainable management of minerals	--	No link.	The GM Minerals Plan covers this.	N/A
To manage waste sustainably in line with the waste hierarchy	--	No link.	The GM Waste Plan covers this.	N/A
To promote mixed, balanced and inclusive sustainable communities	+	If applicants for HMOs have to apply for planning permission in certain areas of concentration it means that as part of the planning process issues such as housing standards, local environment and amenity and concentration can be considered as part of the application process. This will help ensure a mixed, balanced and inclusive sustainable communities.	N/A. Other sections of the plan, such as the built environment also cover this.	N/A

- 8.8** HMO Option B: If there is found to be a concentration of HMOs within a particular area, would you agree with the introduction of a Article 4 direction to remove permitted development rights for HMOs boroughwide?

IA appraisal of Homes of Multiple Occupation Option B

IA Objective	HMO Spatial Option B	Justification	Mitigation / enhancement	Changes made to option a as a result of IA
To protect, conserve and enhance a high quality multifunctional green infrastructure network, including biodiversity and geodiversity that is ecologically connected	--	No link. HMO's traditionally involve the conversion of existing buildings.	Green Infrastructure section of the plan covers this.	N/A
To promote quality and accessible open spaces	--	No link. HMO's traditionally involve the conversion of existing buildings.	Green Infrastructure section of the plan covers this.	N/A
To protect and enhance the character and appearance of landscapes and townscapes, maintaining and strengthening local distinctiveness and sense of place	--	No link. HMO's traditionally involve the conversion of existing buildings.	Green Infrastructure and built environment sections of the plan cover this.	N/A
To protect, conserve and enhance the historic environment, heritage assets and their setting	--	No link. HMO's traditionally involve the conversion of existing buildings.	Green Infrastructure and built environment sections of the plan cover this.	N/A
To promote high quality, beautiful design that meets local design expectations	--	No link. All housing should be high quality.	The built environment section of the plan covers this.	N/A
To ensure land and buildings are used in an effective and efficient manner, maximising the use of brownfield land	+	Asking applicants to apply for planning permission for the development of HMOs boroughwide means that in assessing the applications officers can ensure the land and buildings are being put the most appropriate use for the borough.	Other parts of the plan address this, such as the homes section.	N/A

IA Objective	HMO Spatial Option B	Justification	Mitigation / enhancement	Changes made to option a as a result of IA
To ensure appropriate provision of supporting infrastructure to meet development needs	--	No link.	Sections of the Local Plan review such as Green Infrastructure and communities cover this.	N/A
To improve health and well-being and reduce health inequalities	+	If applicants for HMOs have to apply for planning permission across the borough it means that as part of the planning process issues such as housing standards, local environment and amenity and concentration can be considered as part of the application process. These issues link to health and well being so there will be an improvement.	N/A	N/A
To minimise and mitigate against flood risk and adapt to the effects of flood risk	--	No link.	This is covered in the climate change section of the plan.	N/A
To protect and improve the quality of water bodies and river corridors and availability of water resources	--	No link.	This is covered in the climate change section of the plan.	N/A
To protect and improve soil quality, best and most versatile agricultural land, and remediate contaminated land	--	No link.	This is covered in the Green Infrastructure section of the plan.	N/A
To minimise energy use, promote energy efficiency and the use of renewable and low carbon energy	--	No link.	This is covered in the climate change section of the plan.	N/A

IA Objective	HMO Spatial Option B	Justification	Mitigation / enhancement	Changes made to option a as a result of IA
To ensure communities and infrastructure are resilient to the effects of climate change	--	No link.	This is covered in the Green Infrastructure and climate change sections of the plan.	N/A
To protect and improve air quality	--	No link.	This is covered in the Green Infrastructure, climate change, transport and infrastructure sections of the plan.	N/A
To protect and improve local environmental quality	+	If applicants for HMOs have to apply for planning permission across the borough it means that as part of the planning process issues such as housing standards, local environment and amenity and over-concentration can be considered as part of the application process.	This is also covered in the communities section of the plan.	N/A
To promote an integrated and improved transport system that provides sustainable transport choices and improves connectivity, including the walking and cycling network and the protection of the PROW Network	--	No link.	This is covered in the transport, green infrastructure and communities section of the plan.	N/A
To promote accessibility to key services and reduce the need to travel	--	No link.	This is covered in the transport section of the plan.	N/A
To promote regeneration and reduce levels of deprivation and disparity	+	If applicants for HMOs have to apply for planning permission across the borough it means that as part of the planning process issues such as	N/A	N/A

IA Objective	HMO Spatial Option B	Justification	Mitigation / enhancement	Changes made to option a as a result of IA
		<p>housing standards, local environment and amenity and over-concentration can be considered as part of the application process.</p> <p>These issues can help reduce deprivation and disparity.</p>		
To promote sustainable economic growth and job creation	--	No link.	N/A. The economy and employment section of the plan addresses this.	N/A
To protect and enhance the vitality and viability of Oldham Town Centre and the centres of Chadderton, Failsworth, Hill Stores, Lees, Royton, Shaw and Uppermill	--	No link.	N/A. This is covered in the centres section of the plan.	N/A
To promote sustainable tourism and leisure	--	No link.	This is covered in the employment, centres, Green Infrastructure and communities sections of the plan.	N/A
To improve education attainment and skill levels	--	No link.	This is covered in the communities sections of the plan.	N/A
To provide a sustainable housing land supply and an appropriate mix of sizes, types and tenures to meet local housing needs	+	If applicants for HMOs have to apply for planning permission across the borough it means that as part of the planning process issues such as housing standards, local environment and amenity and over-concentration can be	N/A	N/A

IA Objective	HMO Spatial Option B	Justification	Mitigation / enhancement	Changes made to option a as a result of IA
		considered as part of the application process. This will help ensure an appropriate mix and tenure of housing in those areas.		
To ensure the prudent use and sustainable management of minerals	--	No link.	The GM Minerals Plan covers this.	N/A
To manage waste sustainably in line with the waste hierarchy	--	No link.	The GM Waste Plan covers this.	N/A
To promote mixed, balanced and inclusive sustainable communities	+	If applicants for HMOs have to apply for planning permission across the borough it means that as part of the planning process issues such as housing standards, local environment and amenity and concentration can be considered as part of the application process. This will help ensure a mixed, balanced and inclusive sustainable communities.	N/A. Other sections of the plan, such as the built environment also cover this.	N/A

Outcome:

8.9 The IA appraisal for HMO Spatial Options A and B both scored the same.

Employment Allocations

8.10 The IA of the employment allocations spatial options is set out below.

8.11 Employment Allocations Option A: To focus more on the connectivity to our existing employment sites and neighbouring districts key employment sites.

IA appraisal of Employment Allocations Option A

IA Objective	Employment Allocations Option A	Justification	Mitigation / enhancement	Changes made to option a as a result of IA
To protect, conserve and enhance a high quality multifunctional green infrastructure network, including biodiversity and geodiversity that is ecologically connected	+	Focussing on connectivity to existing employment sites and neighbouring districts key employment sites will help protect the Green Infrastructure network as fewer new employment sites are allocated.	N/A. The Green Infrastructure section covers other aspects on the IA objective.	N/A.
To promote quality and accessible open spaces	+	Focussing on connectivity to existing employment sites and neighbouring districts key employment sites will help protect the open spaces.	N/A. The Green Infrastructure section of the plan also covers this.	N/A
To protect and enhance the character and appearance of landscapes and townscapes, maintaining and strengthening local distinctiveness and sense of place	+	<p>Focussing on connectivity to existing employment sites and neighbouring districts key employment sites will help protect landscapes and townscapes as new employment sites will not be allocated.</p> <p>However there is the opportunity for new development on existing sites to enhance positive features of the landscape and townscape and sense of place.</p>	<p>Ensure that mitigation such as reference to landscape character assessments is built into the policy as the Local Plan is progressed.</p> <p>The Green Infrastructure and built environment sections of the plan also cover this.</p>	N/A

IA Objective	Employment Allocations Option A	Justification	Mitigation / enhancement	Changes made to option a as a result of IA
To protect, conserve and enhance the historic environment, heritage assets and their setting	+	<p>Focussing on connectivity to existing employment sites and neighbouring districts key employment sites will help protect the historic environment and heritage assets as fewer new employment sites are allocated.</p> <p>However any development will still have to ensure that it protects and enhances the historic environment and heritage assets.</p>	Green Infrastructure and built environment sections of the plan also cover this.	N/A
To promote high quality, beautiful design that meets local design expectations	+	New employment development on existing allocations should be of a high quality. However there may be limited scope for new development, seeking to reuse buildings already there. This does offer an opportunity to enhance assets.	N/A. The built environment section of the plan covers this.	N/A
To ensure land and buildings are used in an effective and efficient manner, maximising the use of brownfield land	+	This option would not involve allocating sites on greenfield land, therefore encouraging take up of existing employment land and other brownfield sites, which is an efficient and effective use of land.	N/A. Other sections of the plan also address this, such as the homes section.	N/A
To ensure appropriate provision of supporting infrastructure to meet development needs	+	Improving connectivity will support this objective as the aim is to improve transport connectivity to employment sites.	N/A. Sections of the Local Plan review such as Green	N/A

IA Objective	Employment Allocations Option A	Justification	Mitigation / enhancement	Changes made to option a as a result of IA
			Infrastructure and communities cover this.	
To improve health and well-being and reduce health inequalities	+	Improving connectivity should mean that fewer people are unemployed and have access to high quality jobs therefore resulting in more disposable income to help residents lead healthy lives. Being in employment also supports mental health.	The Local Plan as it is progressed will need to ensure that policy provision is in place to ensure that all sections of the borough will have access to open space that meets identified standards to ensure that health and well being is improved.	N/A
To minimise and mitigate against flood risk and adapt to the effects of flood risk	+	It is assumed that all sites, including greenfield sites would apply appropriate drainage standards, including greenfield run off rates for greenfield sites. It is assumed that national planning guidance will be followed and that flood risk would be managed and not increased elsewhere.	This is covered in the climate change section of the plan. Sites will need to pass the flood risk sequential test (and exceptions test where necessary) to be allocated.	N/A
To protect and improve the quality of water bodies and river corridors and availability of water resources	+	Focussing on connectivity to existing employment sites will mean pressure is reduced in water resources. There is no link to the quality of water bodies. There may be opportunities to improve the quality of water	N/A. This is also covered in the climate change section of the plan.	N/A

IA Objective	Employment Allocations Option A	Justification	Mitigation / enhancement	Changes made to option a as a result of IA
		bodies as opportunities arise but this will be site specific.		
To protect and improve soil quality, best and most versatile agricultural land, and remediate contaminated land	+	<p>Focussing on employment connectivity will reduce pressure on greenfield sites, protecting soil and agricultural land.</p> <p>Some existing employment sites may need remediation which this option could support.</p>	<p>N/A. This is also covered in the Green Infrastructure section of the plan.</p> <p>Ensure site allocation process takes account of agricultural land.</p>	N/A
To minimise energy use, promote energy efficiency and the use of renewable and low carbon energy	--	No link.	N/A. This is also covered in the climate change section of the plan.	N/A
To ensure communities and infrastructure are resilient to the effects of climate change	--	No direct link.	N/A. This is covered in the Green Infrastructure and climate change sections of the plan.	N/A
To protect and improve air quality	+	Focussing on connectivity to existing employment sites should support improved transport infrastructure, including walking and cycling.	Recommend adding into option sustainable connectivity	Option now states 'sustainable connectivity'.
To protect and improve local environmental quality	?	It is considered that this would need to be assessed against each site for allocation and the score could differ.	N/A. This is also covered in the communities section of the plan.	N/A

IA Objective	Employment Allocations Option A	Justification	Mitigation / enhancement	Changes made to option a as a result of IA
To promote an integrated and improved transport system that provides sustainable transport choices and improves connectivity, including the walking and cycling network and the protection of the PROW Network	++	Focussing on connectivity should encourage an improved transport system that encourages sustainable transport choices.	N/A. This is also covered in the transport, green infrastructure and communities section of the plan.	N/A
To promote accessibility to key services and reduce the need to travel	++	By focussing on connectivity this promotes accessibility to employment as a key service and reduces the need to travel to employment sites further away.	N/A. This is also covered in the transport section of the plan.	N/A
To promote regeneration and reduce levels of deprivation and disparity	++	By focussing on connectivity this promotes accessibility to employment as a key service and reduces the need to travel to employment sites further away.	N/A	N/A
To promote sustainable economic growth and job creation	++	Focussing on connectivity should promote sustainable economic growth and job creation through ensuring that communities are well connected to employment opportunities through improved transport connections.	N/A	N/A
To protect and enhance the vitality and viability of Oldham Town Centre and the	+	By focussing on connectivity to existing employment sites this would support the	N/A	N/A

IA Objective	Employment Allocations Option A	Justification	Mitigation / enhancement	Changes made to option a as a result of IA
centres of Chadderton, Failsworth, Hill Stores, Lees, Royton, Shaw and Uppermill		existing employment allocations within Oldham Town Centre.		
To promote sustainable tourism and leisure	--	No link.	This is covered in the employment, centres, Green Infrastructure and communities sections of the plan.	N/A
To improve education attainment and skill levels	+	Improving connectivity to employment sites will help to get more people into work, where apprenticeships and the ability to improve skills levels can be achieved.	This is covered in the communities sections of the plan.	N/A
To provide a sustainable housing land supply and an appropriate mix of sizes, types and tenures to meet local housing needs	--	No link. The housing section of the Local Plan addresses this.	N/A	N/A
To ensure the prudent use and sustainable management of minerals	+	Focussing on connectivity to existing employment sites would help minimise the need for minerals.	N/A. The GM Minerals Plan covers this.	N/A
To manage waste sustainably in line with the waste hierarchy	--	No link.	N/A. The GM Waste Plan covers this.	N/A
To promote mixed, balanced and inclusive sustainable communities	++	Focussing on connectivity to employment sites will help reduce barriers to accessing employment opportunities and will therefore support inclusive communities.	N/A. Other sections of the plan, such as the built environment also cover this.	N/A

8.12 Employment Allocations Option B: A combination of providing some new employment land and improving connectivity to existing and neighbouring districts key employment sites.

IA appraisal of Employment Allocations Option B

IA Objective	Employment Allocations Option B	Justification	Mitigation / enhancement	Changes made to option a as a result of IA
To protect, conserve and enhance a high quality multifunctional green infrastructure network, including biodiversity and geodiversity that is ecologically connected	+/?	<p>Improving connectivity to existing employment sites and neighbouring districts key employment sites will help protect the Green Infrastructure network as fewer new employment sites are allocated.</p> <p>The location of any new employment land is not known so it is unknown how this will affect the GI network.</p>	N/A. The Green Infrastructure section covers other aspects on the IA objective.	N/A.
To promote quality and accessible open spaces	+/?	<p>Improving connectivity to existing employment sites and neighbouring districts key employment sites will help protect the open spaces.</p> <p>The location of any new employment land is not known so it is unknown how this will affect open spaces.</p>	N/A. The Green Infrastructure section of the plan also covers this.	N/A

IA Objective	Employment Allocations Option B	Justification	Mitigation / enhancement	Changes made to option a as a result of IA
To protect and enhance the character and appearance of landscapes and townscapes, maintaining and strengthening local distinctiveness and sense of place	+/?	<p>Improving connectivity to existing employment sites and neighbouring districts key employment sites will help protect landscapes and townscapes.</p> <p>The location of any new employment land is not known so it is unknown how this will affect townscapes and landscapes.</p>	<p>Ensure that mitigation such as reference to landscape character assessments is built into the policy as the local plan is progressed.</p> <p>The Green Infrastructure and built environment sections of the plan also cover this.</p>	N/A
To protect, conserve and enhance the historic environment, heritage assets and their setting	+/?	<p>Focussing on connectivity to existing employment sites and neighbouring districts key employment sites will help protect the historic environment and heritage assets as fewer new employment sites are allocated.</p> <p>The location of any new employment land is not known so it is unknown how this will affect the historic environment and heritage assets.</p>	<p>Ensure a Historic Environment Assessment is prepared for site allocations as the plan is progressed.</p> <p>Green Infrastructure and built environment sections of the plan also cover this.</p>	N/A

IA Objective	Employment Allocations Option B	Justification	Mitigation / enhancement	Changes made to option a as a result of IA
		However any development will still have to ensure that it protects and enhances the historic environment and heritage assets.		
To promote high quality, beautiful design that meets local design expectations	+	<p>New employment development on existing allocations should be of high quality. However there may be limited scope for new development, seeking to reuse buildings already there. This does offer an opportunity to enhance assets.</p> <p>If any new employment sites were to be developed they would be expected to be designed to a high quality.</p>	N/A. The built environment section of the plan covers this.	N/A
To ensure land and buildings are used in an effective and efficient manner, maximising the use of brownfield land	+/?	<p>Improving connectivity to existing and neighbouring sites maximises the use of brownfield land.</p> <p>However it is unknown where any new employment sites will be located so</p>	N/A. Other sections of the plan also address this, such as the homes section.	N/A

IA Objective	Employment Allocations Option B	Justification	Mitigation / enhancement	Changes made to option a as a result of IA
		the impact on the most effective and efficient use of land is unknown.		
To ensure appropriate provision of supporting infrastructure to meet development needs	+	Improving connectivity to existing sites will support this objective as the aim is to improve transport connectivity to employment sites.	N/A. Sections of the Local Plan review such as Green Infrastructure and communities cover this.	N/A
To improve health and well-being and reduce health inequalities	+	Improving connectivity to and creating new employment sites should mean that fewer people are unemployed and have access to high quality jobs therefore resulting in more disposable income to help lead healthy lives. Being in employment also supports mental health.	The Local Plan as it is progressed will need to ensure that policy provision is in place to ensure that all sections of the borough will have access to open space that meets identified standards to ensure that health and well being is improved.	N/A
To minimise and mitigate against flood risk and adapt to the effects of flood risk	+	It is assumed that all sites, including greenfield sites would apply appropriate drainage standards, including greenfield run off rates for greenfield sites. It is assumed that	This is covered in the climate change section of the plan. Sites will need to pass the flood risk sequential test (and exceptions test where necessary) to be allocated.	N/A

IA Objective	Employment Allocations Option B	Justification	Mitigation / enhancement	Changes made to option a as a result of IA
		national planning guidance will be followed and that flood risk would be managed and not increased elsewhere.		
To protect and improve the quality of water bodies and river corridors and availability of water resources	+	<p>Improving connectivity to existing and proposed employment sites will mean pressure is reduced in water resources.</p> <p>There is no link to the quality of water bodies. There may be opportunities to improve the quality of water bodies as opportunities arise but this will be site specific.</p>	N/A. This is also covered in the climate change section of the plan.	N/A
To protect and improve soil quality, best and most versatile agricultural land, and remediate contaminated land	+/?	<p>Improving connectivity to employment sites will reduce pressure on greenfield sites, protecting soil and agricultural land.</p> <p>Some existing employment sites may need remediation which this option could support.</p> <p>Depending on their location the development of</p>	<p>N/A. This is also covered in the Green Infrastructure section of the plan.</p> <p>Ensure site allocation process takes account of agricultural land.</p>	N/A

IA Objective	Employment Allocations Option B	Justification	Mitigation / enhancement	Changes made to option a as a result of IA
		new employment sites may not protect agricultural land.		
To minimise energy use, promote energy efficiency and the use of renewable and low carbon energy	--	No link.	N/A. This is also covered in the climate change section of the plan.	N/A
To ensure communities and infrastructure are resilient to the effects of climate change	--	No direct link. Would need to assess on site by site basis.	N/A. This is covered in the Green Infrastructure and climate change sections of the plan.	N/A
To protect and improve air quality	+ / ?	Improving sustainable connectivity to existing employment sites should support improved transport infrastructure, including walking and cycling, this should have a knock-on effect on improving air quality. It is unknown where any new sites will be located so their impact on air quality is unknown.	Recommend adding into option sustainable connectivity.	Option now states 'sustainable connectivity'.
To protect and improve local environmental quality	?	It is considered that this would need to be assessed against	N/A. This is also covered in the communities section of the plan.	N/A

IA Objective	Employment Allocations Option B	Justification	Mitigation / enhancement	Changes made to option a as a result of IA
		each site for allocation and the score could differ.		
To promote an integrated and improved transport system that provides sustainable transport choices and improves connectivity, including the walking and cycling network and the protection of the PROW Network	+/?	<p>By focussing on connectivity this should encourage an improved transport system that encourages sustainable transport choices.</p> <p>Depending on their location the development of new employment sites may contribute towards this however their locations are unknown.</p>	N/A. This is also covered in the transport, Green Infrastructure and communities section of the plan.	N/A
To promote accessibility to key services and reduce the need to travel	+/?	<p>By focussing on sustainable connectivity this promotes accessibility to employment as a key service and reduces the need to travel to employment sites further away.</p> <p>Depending on their location the development of new employment sites may contribute towards this IA objective, however this is unknown at this stage.</p>	N/A. This is also covered in the transport section of the plan.	N/A

IA Objective	Employment Allocations Option B	Justification	Mitigation / enhancement	Changes made to option a as a result of IA
To promote regeneration and reduce levels of deprivation and disparity	++	Improving sustainable connectivity and creating new employment sites should reduce deprivation and disparity through ensuring that communities are well connected to employment opportunities through improved transport connections.	N/A	N/A
To promote sustainable economic growth and job creation	++	<p>Improving connectivity should promote sustainable economic growth and job creation through ensuring that communities are well connected to employment opportunities through improved transport connections.</p> <p>The creation of new sites will also contribute to this.</p>	N/A	N/A
To protect and enhance the vitality and viability of Oldham Town Centre and the centres of Chadderton, Failsworth, Hill Stores, Lees, Royton, Shaw and Uppermill	+	Focussing on connectivity to existing employment sites will support the existing employment	N/A	N/A

IA Objective	Employment Allocations Option B	Justification	Mitigation / enhancement	Changes made to option a as a result of IA
		allocations within Oldham Town Centre.		
To promote sustainable tourism and leisure	--	No link.	This is covered in the employment, centres, Green Infrastructure and communities sections of the plan.	N/A
To improve education attainment and skill levels	+	By improving sustainable connectivity to employment sites this would help get more people into work, where apprenticeships and the ability to improve skills levels can be achieved. The creation of new employment sites will also contribute to this.	This is covered in the communities sections of the plan.	N/A
To provide a sustainable housing land supply and an appropriate mix of sizes, types and tenures to meet local housing needs	--	No link.	N/A. The housing section of the Local Plan addresses this.	N/A
To ensure the prudent use and sustainable management of minerals	+	Focussing on connectivity to existing employment sites would help minimise the need for minerals. New development sites	N/A. The GM Minerals Plan covers this.	N/A

IA Objective	Employment Allocations Option B	Justification	Mitigation / enhancement	Changes made to option a as a result of IA
		may result in the need for more minerals.		
To manage waste sustainably in line with the waste hierarchy	--	No link.	N/A. The GM Waste Plan covers this.	N/A
To promote mixed, balanced and inclusive sustainable communities	++	<p>By improving sustainable connectivity to employment sites this will help reduce barriers to accessing employment opportunities and will therefore support inclusive communities.</p> <p>The creation of new employment sites will also contribute to this.</p>	N/A. Other sections of the plan, such as the built environment also cover this.	N/A

Outcome

- 8.13** The IA of the employment allocation options shows that at this stage there are more uncertainties with Option B and that if taken forward it would need further assessment and mitigation may be required. The spatial options were enhanced by making reference to sustainable connectivity.

Health and Wellbeing

8.14 The IA of the health and wellbeing spatial options is set out below.

8.15 Health and Wellbeing Option A: Should there be a policy which restricts the location of hot food takeaways within 400m of a school?

IA appraisal of Health and Wellbeing Option A

IA Objective	Health and Wellbeing Option A	Justification	Mitigation / enhancement	Changes made to option a as a result of IA
To protect, conserve and enhance a high quality multifunctional green infrastructure network, including biodiversity and geodiversity that is ecologically connected	--	No link.	N/A. The Green Infrastructure section covers the IA objective.	N/A.
To promote quality and accessible open spaces	--	No link.	N/A. The Green Infrastructure section of the plan covers this.	N/A
To protect and enhance the character and appearance of landscapes and townscapes, maintaining and strengthening local distinctiveness and sense of place	--	No link.	The Green Infrastructure and Built Environment sections of the plan cover this.	N/A
To protect, conserve and enhance the historic environment, heritage assets and their setting	--	No link.	Green Infrastructure and Built Environment sections of the plan cover this.	N/A
To promote high quality, beautiful design that meets local design expectations	--	No link. All development should be high quality.	N/A. The Built Environment section of the plan covers this.	N/A
To ensure land and buildings are used in an effective and efficient manner, maximising the use of brownfield land	--	No link.	N/A. Other parts of the plan address this, such as the homes section.	N/A

IA Objective	Health and Wellbeing Option A	Justification	Mitigation / enhancement	Changes made to option a as a result of IA
To ensure appropriate provision of supporting infrastructure to meet development needs	--	No link.	N/A. Sections of the Local Plan review such as Green Infrastructure and communities cover this.	N/A
To improve health and well-being and reduce health inequalities	+	Restricting hot food takeaways within 400m of a school will improve health and well-being and reduce health inequalities for some children as they will not have easy access to hot food take away which can contribute to high levels of obesity.	N/A.	N/A
To minimise and mitigate against flood risk and adapt to the effects of flood risk	--	No link.	This is covered in the climate change section of the plan.	N/A
To protect and improve the quality of water bodies and river corridors and availability of water resources	--	No link.	N/A. This is covered in the climate change section of the plan.	N/A
To protect and improve soil quality, best and most versatile agricultural land, and remediate contaminated land	--	No link.	N/A. This is covered in the Green Infrastructure section of the plan.	N/A
To minimise energy use, promote energy efficiency and the use of renewable and low carbon energy	--	No link.	N/A. This is covered in the climate change section of the plan.	N/A

IA Objective	Health and Wellbeing Option A	Justification	Mitigation / enhancement	Changes made to option a as a result of IA
To ensure communities and infrastructure are resilient to the effects of climate change	--	No link.	N/A. This is covered in the Green Infrastructure and climate change sections of the plan.	N/A
To protect and improve air quality	--	No link.	N/A. This is also covered in other sections of the plan, such as the communities and transport sections.	N/A
To protect and improve local environmental quality	+	Restricting hot food takeaways within 400m of schools would protect and improve local environmental quality within that area. There will be reduced levels of litter which can be associated with hot food takeaways.	N/A.	N/A
To promote an integrated and improved transport system that provides sustainable transport choices and improves connectivity, including the walking and cycling network and the protection of the PROW Network	--	No link.	N/A. This is covered in the transport, Green Infrastructure and communities sections of the plan.	N/A
To promote accessibility to key services and reduce the need to travel	--	No link.	N/A. This is covered in the transport section of the plan.	N/A
To promote regeneration and reduce levels of deprivation and disparity	+	Restricting hot food take aways within 400m of a school will improve some issues associated with	N/A	N/A

IA Objective	Health and Wellbeing Option A	Justification	Mitigation / enhancement	Changes made to option a as a result of IA
		disparity as the children will not have easy access to hot food takeaways which can contribute to high levels of obesity, potentially causing health issues.		
To promote sustainable economic growth and job creation	--	No link.	N/A. The economy and employment section of the plan addresses this.	N/A
To protect and enhance the vitality and viability of Oldham Town Centre and the centres of Chadderton, Failsworth, Hill Stores, Lees, Royton, Shaw and Uppermill	+	<p>The borough's centres tend to have a high concentration of hot food takeaways. If restricting takeaways from within 400m of a school, reduces the number of takeaways within the boroughs centres, this could have a secondary positive impact on the appearance and therefore the vitality and viability of them.</p> <p>There will be reduced levels of litter which can be associated with hot food takeaways and less units with closed roller shutters present, which again can be common in hot food takeaway units.</p>	N/A	N/A

IA Objective	Health and Wellbeing Option A	Justification	Mitigation / enhancement	Changes made to option a as a result of IA
To promote sustainable tourism and leisure	--	No link.	This is covered in the employment, centres, Green Infrastructure and communities sections of the plan.	N/A
To improve education attainment and skill levels	--	No link.	This is covered in the communities sections of the plan.	N/A
To provide a sustainable housing land supply and an appropriate mix of sizes, types and tenures to meet local housing needs	--	No link.	N/A. The housing section of the Local Plan addresses this.	N/A
To ensure the prudent use and sustainable management of minerals	--	No link.	N/A. The GM Minerals Plan covers this.	N/A
To manage waste sustainably in line with the waste hierarchy	--	No link.	N/A. The GM Waste Plan covers this.	N/A
To promote mixed, balanced and inclusive sustainable communities	--	No link.	N/A. Other sections of the plan, such as the built environment cover this.	N/A

8.16 Option B: Should there be a policy which restricts the location of hot food takeaways in areas with high levels of obesity?

IA appraisal of Health and Well Being Option B

IA Objective	Health and Wellbeing Option B	Justification	Mitigation / enhancement	Changes made to option a as a result of IA
To protect, conserve and enhance a high quality multifunctional green infrastructure network, including biodiversity and geodiversity that is ecologically connected	--	No link.	N/A. The Green Infrastructure section covers the IA objective.	N/A.
To promote quality and accessible open spaces	--	No link.	N/A. The Green Infrastructure section of the plan covers this.	N/A
To protect and enhance the character and appearance of landscapes and townscapes, maintaining and strengthening local distinctiveness and sense of place	--	No link.	N/A. The Green Infrastructure and built environment sections of the plan cover this.	N/A
To protect, conserve and enhance the historic environment, heritage assets and their setting	--	No link.	N/A. Green Infrastructure and built environment sections of the plan cover this.	N/A
To promote high quality, beautiful design that meets local design expectations	--	No link. All development should be high quality.	N/A. The built environment section of the plan covers this.	N/A
To ensure land and buildings are used in an effective and efficient manner, maximising the use of brownfield land	--	No link.	N/A. Other parts of the plan address this, such as the homes section.	N/A
To ensure appropriate provision of supporting infrastructure to meet development needs	--	No link.	N/A. Sections of the Local Plan review such as Green	N/A

IA Objective	Health and Wellbeing Option B	Justification	Mitigation / enhancement	Changes made to option a as a result of IA
			Infrastructure and communities cover this.	
To improve health and well-being and reduce health inequalities	++	Restricting hot food takeaways in areas with high levels of obesity will improve the health and well-being and reduce health inequalities in residents as they will not have easy access to hot food takeaways which can contribute to high levels of obesity.	N/A.	N/A
To minimise and mitigate against flood risk and adapt to the effects of flood risk	--	No link.	N/A This is covered in the climate change section of the plan.	N/A
To protect and improve the quality of water bodies and river corridors and availability of water resources	--	No link.	N/A. This is covered in the climate change section of the plan.	N/A
To protect and improve soil quality, best and most versatile agricultural land, and remediate contaminated land	--	No link.	N/A. This is covered in the Green Infrastructure section of the plan.	N/A
To minimise energy use, promote energy efficiency and the use of renewable and low carbon energy	--	No link.	N/A. This is covered in the climate change section of the plan.	N/A
To ensure communities and infrastructure are resilient to the effects of climate change	--	No link.	N/A. This is covered in the Green Infrastructure and climate change sections of the plan.	N/A

IA Objective	Health and Wellbeing Option B	Justification	Mitigation / enhancement	Changes made to option a as a result of IA
To protect and improve air quality	--	No link.	N/A	N/A
To protect and improve local environmental quality	+	Restricting hot food takeaways in areas of high obesity would protect and improve local environmental quality within that area. For example, it is likely there will be reduced levels of litter which can be associated with hot food takeaways.	N/A.	N/A
To promote an integrated and improved transport system that provides sustainable transport choices and improves connectivity, including the walking and cycling network and the protection of the PROW Network	--	No link.	N/A. This is covered in the transport, Green Infrastructure and communities sections of the plan.	N/A
To promote accessibility to key services and reduce the need to travel	--	No link.	N/A. This is covered in the transport section of the plan.	N/A
To promote regeneration and reduce levels of deprivation and disparity	+	Restricting hot food take aways in areas with high levels of obesity will improve some issues associated with disparity as people will not have easy access to hot food takeaways which can contribute to high levels of obesity, potentially causing health issues.	N/A	N/A

IA Objective	Health and Wellbeing Option B	Justification	Mitigation / enhancement	Changes made to option a as a result of IA
To promote sustainable economic growth and job creation	--	No link.	N/A. The economy and employment section of the plan addresses this.	N/A
To protect and enhance the vitality and viability of Oldham Town Centre and the centres of Chadderton, Failsworth, Hill Stores, Lees, Royton, Shaw and Uppermill	+	<p>The borough's centres tend to have a high concentration of hot food takeaways. If restricting takeaways in areas of high levels of obesity, has a knock-on effect and reduces the number of takeaways within the boroughs centres, this could have a positive impact on the appearance and therefore the vitality and viability of them.</p> <p>There will be reduced levels of litter which can be associated with hot food takeaways and less units with closed roller shutters present, which again can be common in hot food takeaway units.</p>	N/A	N/A
To promote sustainable tourism and leisure	--	No link.	This is covered in the employment, centres, Green Infrastructure and communities sections of the plan.	N/A
To improve education attainment and skill levels	--	No link.	This is covered in the communities sections of the plan.	N/A

IA Objective	Health and Wellbeing Option B	Justification	Mitigation / enhancement	Changes made to option a as a result of IA
To provide a sustainable housing land supply and an appropriate mix of sizes, types and tenures to meet local housing needs	--	No link.	N/A. The housing section of the Local Plan addresses this.	N/A
To ensure the prudent use and sustainable management of minerals	--	No link.	N/A. The GM Minerals Plan covers this.	N/A
To manage waste sustainably in line with the waste hierarchy	--	No link.	N/A. The GM Waste Plan covers this.	N/A
To promote mixed, balanced and inclusive sustainable communities	--	No link.	N/A. Other sections of the plan, such as built environment cover this.	N/A

8.17 Option C: Should there be a policy which restricts the location of hot food takeaways within 400m of a school and in areas with high levels of obesity?

IA appraisal of Health and Well Being Option C

IA Objective	Health and Wellbeing Option C	Justification	Mitigation / enhancement	Changes made to option a as a result of IA
To protect, conserve and enhance a high quality multifunctional green infrastructure network, including biodiversity and geodiversity that is ecologically connected	--	No link.	N/A. The Green Infrastructure section covers the IA objective.	N/A.
To promote quality and accessible open spaces	--	No link.	N/A. The Green Infrastructure section of the plan covers this.	N/A
To protect and enhance the character and appearance of landscapes and townscapes, maintaining and strengthening local distinctiveness and sense of place	--	No link.	N/A. The Green Infrastructure and built environment sections of the plan cover this.	N/A
To protect, conserve and enhance the historic environment, heritage assets and their setting	--	No link.	N/A. Green Infrastructure and built environment sections of the plan cover this.	N/A
To promote high quality, beautiful design that meets local design expectations	--	No link. All development should be high quality.	N/A. The built environment section of the plan covers this.	N/A
To ensure land and buildings are used in an effective and efficient manner, maximising the use of brownfield land	--	No link.	N/A. Other parts of the plan address this, such as the homes section.	N/A
To ensure appropriate provision of supporting infrastructure to meet development needs	--	No link.	N/A. Sections of the Local Plan review such as Green	N/A

IA Objective	Health and Wellbeing Option C	Justification	Mitigation / enhancement	Changes made to option a as a result of IA
			Infrastructure and communities cover this.	
To improve health and well-being and reduce health inequalities	++	Restricting hot food takeaways within 400m of a school and in areas of high obesity will improve health and well-being and reduce health inequalities for some children and residents in particular areas as they will not have easy access to hot food take away which can contribute to high levels of obesity.	N/A.	N/A
To minimise and mitigate against flood risk and adapt to the effects of flood risk	--	No link.	N/A This is covered in the climate change section of the plan.	N/A
To protect and improve the quality of water bodies and river corridors and availability of water resources	--	No link.	N/A. This is covered in the climate change section of the plan.	N/A
To protect and improve soil quality, best and most versatile agricultural land, and remediate contaminated land	--	No link.	N/A. This is covered in the Green Infrastructure section of the plan.	N/A
To minimise energy use, promote energy efficiency and the use of renewable and low carbon energy	--	No link.	N/A. This is covered in the climate change section of the plan.	N/A
To ensure communities and infrastructure are resilient to the effects of climate change	--	No link.	N/A. This is covered in the Green Infrastructure and	N/A

IA Objective	Health and Wellbeing Option C	Justification	Mitigation / enhancement	Changes made to option a as a result of IA
			climate change sections of the plan.	
To protect and improve air quality	--	No link.	N/A	N/A
To protect and improve local environmental quality	++	Restricting hot food takeaways within 400 metres of a school and in areas of high obesity would protect and improve local environmental quality within that area. Restricting takeaways against both options may protect and improve local environmental quality across a larger geographical area. For example, through reduced levels of litter which can be associated with hot food takeaways.	N/A.	N/A
To promote an integrated and improved transport system that provides sustainable transport choices and improves connectivity, including the walking and cycling network and the protection of the PROW Network	--	No link.	N/A. This is covered in the transport, Green Infrastructure and communities sections of the plan.	N/A
To promote accessibility to key services and reduce the need to travel	--	No link.	N/A. This is covered in the transport section of the plan.	N/A
To promote regeneration and reduce levels of deprivation and disparity	+	Restricting hot food take aways within 400 metres of a school and in areas with high levels	N/A	N/A

IA Objective	Health and Wellbeing Option C	Justification	Mitigation / enhancement	Changes made to option a as a result of IA
		of obesity will improve some issues associated with disparity as people will not have easy access to hot food takeaways which can contribute to high levels of obesity, potentially causing health issues.		
To promote sustainable economic growth and job creation	--	No link.	N/A. The economy and employment section of the plan addresses this.	N/A
To protect and enhance the vitality and viability of Oldham Town Centre and the centres of Chadderton, Failsworth, Hill Stores, Lees, Royton, Shaw and Uppermill	++	The borough's centres tend to have a high concentration of hot food takeaways. If restricting takeaways within 400 metres of schools and in areas of high levels of obesity, reduces the number of takeaways within the boroughs centres, this could have a secondary positive impact on the appearance and therefore the vitality and viability of them. There will be reduced levels of litter which can be associated with hot food takeaways and less units with closed roller shutters present, which again can be common in hot food takeaway units.	N/A	N/A

IA Objective	Health and Wellbeing Option C	Justification	Mitigation / enhancement	Changes made to option a as a result of IA
		Restricting takeaways against both options is likely to cover a higher extent of centres.		
To promote sustainable tourism and leisure	--	No link.	This is covered in the employment, centres, Green Infrastructure and communities sections of the plan.	N/A
To improve education attainment and skill levels	--	No link.	This is covered in the communities sections of the plan.	N/A
To provide a sustainable housing land supply and an appropriate mix of sizes, types and tenures to meet local housing needs	--	No link.	N/A. The housing section of the Local Plan addresses this.	N/A
To ensure the prudent use and sustainable management of minerals	--	No link.	N/A. The GM Minerals Plan covers this.	N/A
To manage waste sustainably in line with the waste hierarchy	--	No link.	N/A. The GM Waste Plan covers this.	N/A
To promote mixed, balanced and inclusive sustainable communities	--	No link.	N/A. Other sections of the plan, such as the built environment cover this.	N/A

Outcome

8.18 The IA of Option A, B and C scored neutral against most IA objectives. However, Option B and C scored a significantly positive impact against the IA objective 'To improve health and well-being and reduce health inequalities'. Option C scored significantly positive against a further two IA objectives relating to local environmental quality and centres and therefore higher overall.

9 Appendix 1: Equalities Impact Assessment

Equalities Impact Assessment

Initial Information	
Lead Officer:	Edward Campbell
People involved in completing EIA:	Georgina Brownridge, Edward Campbell
Is this the first time that this project, policy or proposal has had an EIA carried out on it? If no, please state date of original and append to this document for information.	Yes

General Information

General Information		
1a	Which service does this project, policy, or proposal relate to?	Planning and Infrastructure
1b	What is the project, policy or proposal?	Local Plan Issues and Options
1c	What are the main aims of the project, policy or proposal?	To set out the Vision, plan objectives and issues and options, including spatial options the council will need to address in the Local Plan review.
1d	Who, potentially, could this project, policy or proposal have a detrimental effect on, or benefit, and how?	The Local Plan's focus is on creating a better place through building more homes, town centre regeneration, and ensuring that Oldham has lots of family friendly and accessible places to go. It is not expected to have a detrimental impact on any groups. Part of the reason for the Issues and Options being produced is to make sure any potential issues are raised and solutions sought.

EIA Assessment

1e. Does the project, policy or proposal have the potential to <u>disproportionately</u> impact on any of the following groups? If so, is the impact positive or negative?				
	None	Positive	Negative	Not sure

1e. Does the project, policy or proposal have the potential to <u>disproportionately</u> impact on any of the following groups? If so, is the impact positive or negative?				
Disabled people		x		
Particular ethnic groups		x		
Men or women (include impacts due to pregnancy / maternity)		x		
People of particular sexual orientation/s		x		
People in a Marriage or Civil Partnership		x		
People who are proposing to undergo, are undergoing or have undergone a process or part of a process of gender reassignment		x		
People on low incomes		x		
People in particular age groups		x		
Groups with particular faiths and beliefs		x		
Are there any other groups that you think may be affected negatively or positively by this project, policy or proposal?				
<i>E.g. vulnerable residents, homeless people, individuals at risk of loneliness, carers or serving and ex-serving members of the armed forces</i>	x			

9.1 If the answer is “negative” or “not sure” consider doing a full EIA.

Overall impact

Overall Impact	Impact	
1f. What do you think that the overall NEGATIVE impact on groups and communities will be?	None / Minimal	Significant
Please note that an example of <u>none / minimal impact would be where there is no negative impact identified, or there will be no change to the service for any groups.</u> Wherever a	x	

Overall Impact	Impact	
negative impact has been identified you should consider completing the rest of the form.		

EIA Conclusion

Question	Concluding Questions	Response and Justification
1 g	Using the screening and information in questions 1e and 1f, should a full assessment be carried out on the project, policy or proposal?	No
1h	How have you come to this decision?	<p>The Local Plan Issues and Options should have a positive impact on members of public from different age groups, ethnic backgrounds and those on lower incomes. It draws on a large evidence base including Sustainability Appraisals, council statistics, public consultation and monitoring to identify the planning issues facing Oldham.</p> <p>The paper seeks to provide options that aim to improve the lives of all residents and groups in Oldham.</p> <p>For example, the Local Plan may have a positive impact on different age groups and those on lower incomes by setting out how the council will provide a range of housing to meet their needs. It seeks to improve local public transport and walking and cycling connections and make sure there is a range of accessible employment opportunities. It also plans to safeguard and improve the local natural environment which would again benefit all people in Oldham through improved air quality for example.</p>

Signatures

Stage 5: Signature	
Lead Officer: Edwards Campbell 01.10.2020	Date:
Approver signature:	

Stage 5: Signature

A small, square image of a handwritten signature in black ink on a white background.

Date: 01.10.2020

EIA review date: On review of the Local Plan

10 Appendix 2: Health Impact Assessment

10.1 The HIA of plan objective 1 is set out below:

Health Impact Assessment of Objective 1

Screening Question	No	Yes
<p>Will the proposal have a direct impact on health, mental health and well-being?</p> <p>Would it cause ill health, affecting social inclusion, independence and participation?</p>		<p>The objective will have a direct impact on health, mental health and well-being.</p> <p>Provision of housing and affordable housing to meet housing needs will help prevent overcrowding and ensures access to quality housing.</p> <p>If the character of an area has changed due to increased growth or greater density of development, this could result in some groups losing connection with an area, particularly those with learning difficulties, looked after children and those in residential care.</p> <p>The provision of affordable housing can create mixed and socially inclusive communities. The provision of affordable family sized homes can have a positive impact on the physical and mental health of those living in overcrowded, unsuitable or temporary accommodation.</p> <p>Both affordable and private housing should be designed to a high standard ('tenure blind').</p>
<p>Will the policy have an impact on social, economic and environmental living conditions that would indirectly affect health?</p> <p>Would it affect housing, transport, child development, education, good employment opportunities, green space or climate change?</p>		<p>Provision of housing and affordable housing to meet housing need helps to prevent overcrowding and ensures access to quality housing.</p>
<p>Will the proposal affect an individual's ability to improve their own health and well-being?</p> <p>For example will it affect their ability to be physically active, choose healthy food, reduce drinking and smoking?</p>		<p>Provision of housing and affordable housing to meet the housing needs can help prevent overcrowding and ensures access to quality housing.</p> <p>Development on brownfield sites maintains protection for open spaces which offer opportunity for physical activity, social interaction and community cohesion.</p>

Screening Question	No	Yes
<p>Will there be a change in demand for or access to health and social care services?</p> <p>For example: Primary Care, Hospital Carr, Community Services and Social Services?</p>		<p>The provision of housing, including affordable housing may result in less use of primary and hospital care, as poor-quality housing is a known contributor to negative health impacts in Oldham.</p>
<p>Will the proposal have an impact on global health?</p>	No.	

10.2 The HIA of plan objective 2 is set out below.

Health Impact Assessment of Objective 2

Screening Question	No	Yes
<p>Will the proposal have a direct impact on health, mental health and well-being?</p> <p>Would it cause ill health, affecting social inclusion, independence and participation?</p>		<p>The objective will have a direct impact on health, mental health and well-being.</p> <p>The plan objective would provide access to services and facilities which are needed by the community. The plan objective will help provide opportunities for interaction with other parts of the community, preventing social isolation and increasing community cohesion.</p>
<p>Will the policy have an impact on social, economic and environmental living conditions that would indirectly affect health?</p> <p>Would it affect housing, transport, child development, education, good employment opportunities, green space or climate change?</p>		<p>Access to a range of primary, secondary and post-19 education improves self-esteem, job opportunities and earning capability.</p>
<p>Will the proposal affect an individual's ability to improve their own health and well-being?</p> <p>For example will it affect their ability to be physically active, choose healthy food, reduce drinking and smoking?</p>		<p>The plan objective would mean that people are able to access education that will enable them to make better, more informed choices.</p>
<p>Will there be a change in demand for or access to health and social care services?</p> <p>For example: Primary Care, Hospital Carr, Community Services and Social Services?</p>		<p>The plan objective should ensure that there is less reliance on primary and hospital care by ensuring that people have access to better education and therefore, are able to make more informed choices on how they live their lives. For instance, by learning about healthy foods and exercise, they would be more inclined to make active travel choices rather than use the private car.</p>
<p>Will the proposal have an impact on global health?</p>	No.	

10.3 The HIA of plan objective 3 is set out below.

Table 1 Health Impact Assessment of Objective 3

Screening Question	No	Yes
<p>Will the proposal have a direct impact on health, mental health and well-being?</p> <p>Would it cause ill health, affecting social inclusion, independence and participation?</p>		<p>The objective will have a direct impact on health, mental health and well-being.</p> <p>Protection for employment uses provides opportunities for employment, training and apprenticeships at a local level, which is particularly important for those who cannot afford to travel to remain in employment.</p> <p>Urban planning linked to clear strategies for economic regeneration, allocation of appropriate sites and coordination of infrastructure provision can assist by facilitating attractive opportunities for businesses, encourage diversity in employment and ensure that local jobs are retained. The plan objective would help reduce ill health as people who are in employment are known to have less physical and mental health problems.</p>
<p>Will the policy have an impact on social, economic and environmental living conditions that would indirectly affect health?</p> <p>Would it affect housing, transport, child development, education, good employment opportunities, green space or climate change?</p>		<p>Redevelopment of industrial estates provide opportunities for health improvement, particularly amongst certain groups such as lower income groups to address their health problems such as poor self-esteem and mental health which generally associated with unemployment and poverty.</p> <p>Connectivity to an integrated transport system can also play an important part in providing access to job opportunities. The provision of local work can</p>

Screening Question	No	Yes
		<p>encourage shorter trip lengths and thus reduce emissions from transport and enable healthy walking or cycling options to be pursued.</p> <p>Access to other support services, notably childcare, can make employment opportunities easier to access for a significant segment of the population.</p>
<p>Will the proposal affect an individual's ability to improve their own health and well-being?</p> <p>For example will it affect their ability to be physically active, choose healthy food, reduce drinking and smoking?</p>		<p>The objective would provide opportunities for employment, training and apprenticeships for local people.</p> <p>The plan objective should seek to ensure that people can access workplaces through a variety of transport modes, including walking, cycling and public transport, thus ensuring that there are additional health benefits of employment by utilising active travel methods. This is covered in more detail by objective 8.</p>
<p>Will there be a change in demand for or access to health and social care services?</p> <p>For example: Primary Care, Hospital Carr, Community Services and Social Services?</p>		<p>Improving employment opportunities should lead to a decrease in demand for primary and hospital care, due to associated mental and physical health benefits that being in work provides. Whilst this may lead to more people living within the borough and accessing employment and thus primary care, this will be mitigated by the increased use of active travel methods which will reduce demand due to associated health benefits of utilising active travel modes.</p>
Will the proposal have an impact on global health?	No	

10.4 The HIA of plan objective 4 is set out below.

Health Impact Assessment of Objective 4

Screening Question	No	Yes
<p>Will the proposal have a direct impact on health, mental health and well-being?</p> <p>Would it cause ill health, affecting social inclusion, independence and participation?</p>		<p>The objective will have a direct impact on health, mental health and well-being.</p> <p>Access to retail and services within centres means access to services locally, which encourages walking and cycling.</p> <p>The plan objective would promote living and working within town centres which in turn will create healthier and more walkable environments. It could also lead to a reduction in crime and fear of crime due to the increase in residents within town centres.</p> <p>The plan objective would promote employment and living opportunities within the town centres of Oldham, thus creating a critical mass of people within them which will improve social inclusion, independence and participation.</p>
<p>Will the policy have an impact on social, economic and environmental living conditions that would indirectly affect health?</p> <p>Would it affect housing, transport, child development, education, good employment opportunities, green space or climate change?</p>		<p>The plan objective would have an impact, primarily through the introduction of development, including housing, associated transport infrastructure and employment opportunities.</p> <p>Access to retail and services within centres means access to services locally and also encourages walking and cycling. Having a critical mass of people and services will result in a reduction of the use of the private car and subsequent improvements in air quality, which is a known issue in Oldham town centre for instance.</p>
<p>Will the proposal affect an individual's ability to improve their own health and well-being?</p> <p>For example will it affect their ability to be physically active, choose healthy food, reduce drinking and smoking?</p>		<p>Provides opportunities for employment, training and apprenticeships.</p> <p>The objective would support the Oldham Town Centre Vision which promotes working and living within the Town Centre and can provide opportunities for higher quality housing, linked to high quality multi-functional green infrastructure.</p> <p>The plan objective should ensure that homes in the borough's centres have appropriate provision of green infrastructure, open spaces, public services and infrastructure as part of the Oldham Town Centre Vision. Other centres in the borough would also ensure that centre development has access to appropriate green infrastructure.</p>

Screening Question	No	Yes
		The plan objective includes incorporating multi functional, useable green infrastructure in our centres to make them attractive locations that people want to spend time in and creating safe, healthy and friendly town centres that are accessible for all and enable active streets. This should give the ability for an individual to improve their health and well-being.
<p>Will there be a change in demand for or access to health and social care services?</p> <p>For example: Primary Care, Hospital Carr, community Services and Social Services?</p>		<p>Improving employment and living opportunities within the borough's centres should lead to a decrease in demand for primary and hospital care, due to associated mental and physical health benefits of living in social environments.</p> <p>The introduction of Green Infrastructure within centres should also reduce the demand on primary and hospital care as it will promote healthier and more walkable environments, thus encouraging a more active lifestyle.</p> <p>A critical mass of homes and work within centres, when coupled with the associated sustainable transport connections, should also ensure less reliance on the private car and increase use of public transport and where appropriate, active travel.</p>
Will the proposal have an impact on global health?	No.	

10.5 The HIA of plan objective 5 is set out below.

Table 2 Health Impact Assessment of Objective 5

Screening Question	No	Yes
<p>Will the proposal have a direct impact on health, mental health and well-being?</p> <p>Would it cause ill health, affecting social inclusion, independence and participation?</p>		<p>The objective will have a direct impact on health, mental health and well-being</p> <p>Creation of a multi-functional network of open spaces ensures that different groups are able to use open spaces for uses such as physical activity, recreation and interaction with others.</p> <p>Access to open space can be therapeutic for those with poor mental health or substance misuse issues.</p> <p>Multifunctional Green Infrastructure can include food growing which offers growth of local, healthy food and provides therapeutic activities.</p>
<p>Will the policy have an impact on social, economic and environmental living conditions that would indirectly affect health?</p> <p>Would it affect housing, transport, child development, education, good employment opportunities, green space or climate change?</p>		<p>Access to open space can be therapeutic for those with poor mental health or substance misuse issues.</p> <p>Encouragement of food growing offers growth of local, healthy food and provides therapeutic activities.</p> <p>The creation of SUDS and multifunctional Green Infrastructure will help places become more resilient to climate change.</p> <p>This objective will ensure the provision of new or improved open spaces to promote health and well-being and support new homes and designation of Local Green Spaces.</p> <p>The plan objective should also promote the beneficial use of the Green Belt for associated leisure activities.</p>

Screening Question	No	Yes
<p>Will the proposal affect an individual's ability to improve their own health and well-being?</p> <p>For example will it affect their ability to be physically active, choose healthy food, reduce drinking and smoking?</p>		<p>Access to open space can be therapeutic for those with poor mental health or substance misuse issues.</p> <p>The creation of multifunctional Green Infrastructure can offer encouragement of food growing, which offers growth of local, healthy food and provides therapeutic activities.</p> <p>The plan objective would ensure the creation and use of existing Green Infrastructure which will provide communal spaces to support social cohesion.</p> <p>The plan objective will also ensure opportunities for recreation and physical activity for all population groups.</p> <p>This objective will ensure the provision of new or improved open spaces to promote health and well-being and support new homes and designation of Local Green Spaces, which can be used for recreation.</p>
<p>Will there be a change in demand for or access to health and social care services?</p> <p>For example: Primary Care, Hospital Carr, Community Services and Social Services?</p>		<p>The plan objective should, by increasing access to existing Green Infrastructure and creating new areas of Green Infrastructure ensure more active and healthier lifestyles. Encouragement should also be given to accessing these spaces by active modes of transport. This will then have resulting beneficial impacts on people's health and thus reduce the impact on primary and hospital care for instance.</p>
<p>Will the proposal have an impact on global health?</p>	No.	

10.6 The HIA of plan objective 6 is set out below.

Health Impact Assessment of Objective 6

Screening Question	No	Yes
<p>Will the proposal have a direct impact on health, mental health and well-being?</p> <p>Would it cause ill health, affecting social inclusion, independence and participation?</p>		<p>The objective will have a direct impact on health, mental health and well-being.</p> <p>The objective will ensure the creation of better and higher quality homes which will help reduce overheating, which can be a significant factor in deaths during heatwaves.</p> <p>The objective should ensure the use of renewable energy in new developments, which in turn should help reduce fuel poverty in Oldham, which is a known issue and can have associated health impacts.</p>
<p>Will the policy have an impact on social, economic and environmental living conditions that would indirectly affect health?</p> <p>Would it affect housing, transport, child development, education, good employment opportunities, green space or climate change?</p>		<p>Flooding can result in risks to physical and mental health. The stress of being flooded and cleaning up can have a significant impact on mental health and wellbeing.</p> <p>Climate change with higher average summer temperatures is likely to intensify the urban heat island effect ⁽¹⁾ and result in discomfort and excess summer deaths amongst vulnerable people. The objective will help in promoting urban greening, which can have a significant impact on cooling the local environment with tree planting, green roofs and walls and soft landscaping that can help prevent summer overheating.</p>
<p>Will the proposal affect an individual's ability to improve their own health and well-being?</p> <p>For example will it affect their ability to be physically active, choose healthy food, reduce drinking and smoking?</p>		<p>Access to nature and biodiversity can contribute to mental health and wellbeing.</p> <p>New development can improve existing, or create new, habitats or use design solutions (green roofs, living walls) to enhance biodiversity. Which in turn can improve physical and mental health as access to green spaces will ensure that people have somewhere to walk to and enjoy.</p>
<p>Will there be a change in demand for or access to health and social care services?</p> <p>For example: Primary Care, Hospital Carr, Community Services and Social Services?</p>		<p>Overall, the objective should lead to a reduction in the demand for access to primary and hospital care. Primarily, this will be down to the improved quality of housing that will reduce the risk of overheating, fuel poverty and help mitigate the impact of climate change.</p>

¹ Urban heat islands occur when cities / towns replace natural land cover with dense concentrations of pavement, buildings, and other surfaces that absorb and retain heat. This effect increases energy costs (e.g., for air conditioning), air pollution levels, and heat-related illness and mortality

Screening Question	No	Yes
Will the proposal have an impact on global health?	No.	

10.7 The HIA of plan objective 7 is set out below.

Health Impact Assessment of Objective 7

Screening Question	No	Yes
<p>Will the proposal have a direct impact on health, mental health and well-being?</p> <p>Would it cause ill health, affecting social inclusion, independence and participation?</p>		<p>The objective will have a direct impact on health, mental health and well-being.</p> <p>Poor access and quality of healthcare services exacerbates ill-health, making treatment more difficult. The provision of support services, including advice on healthy living can prevent ill health. The objective will support the improvement of access to these services.</p>
<p>Will the policy have an impact on social, economic and environmental living conditions that would indirectly affect health?</p> <p>Would it affect housing, transport, child development, education, good employment opportunities, green space or climate change?</p>		<p>Access to open space can be therapeutic for those with poor mental health or substance misuse issues.</p> <p>Access to a range of primary, secondary and post-19 education improves self-esteem, job opportunities and earning capability.</p> <p>Encouragement of food growing offers growth of local, healthy food and provides therapeutic activities.</p> <p>Good access to local services is a key element of a lifetime neighbourhood and additional services will be required to support new development. Failure to do so will place pressure on existing services. The objective will help formulate policies which ensure that places are not isolated.</p>
<p>Will the proposal affect an individual's ability to improve their own health and well-being?</p> <p>For example will it affect their ability to be physically active, choose healthy food, reduce drinking and smoking?</p>		<p>Access to open space can be therapeutic for those with poor mental health or substance misuse issues.</p> <p>Encouragement of food growing offers growth of local, healthy food and provides therapeutic activities.</p> <p>Access to education and health facilities will enable people to make more informed choices about their lifestyle.</p>
<p>Will there be a change in demand for or access to health and social care services?</p> <p>For example: Primary Care, Hospital Carr, Community Services and Social Services?</p>		<p>Encouragement of food growing offers growth of local, healthy food and provides therapeutic activities, this would be the physical activity associated with food growing, which in turn has health benefits associated with reducing obesity and inactivity in Oldham.</p> <p>New and improved modern schools and health facilities will result in less use of the primary and hospital care, by enabling better diagnosis of health problems and ensuring</p>

Screening Question	No	Yes
		effective treatment. In relation to schools, the benefits of new schools have shown to have a marked improvement on pupil attainment and thus improving their life chances and health.
Will the proposal have an impact on global health?	No.	

10.8 The HIA of plan objective 8 is set out below.

Health Impact Assessment of Objective 8

Screening Question	No	Yes
<p>Will the proposal have a direct impact on health, mental health and well-being?</p> <p>Would it cause ill health, affecting social inclusion, independence and participation?</p>		<p>The objective will have a direct impact on health, mental health and well-being.</p> <p>The development of the Oldham Code is expected to have the following impacts:</p> <ul style="list-style-type: none"> • Ensure generous space standards that will have positive impact on mental health and for those groups who may be at home more such as older people and those who are unemployed. • Ensure amenity and communal space standards that can have a positive impacts on mental health and provide opportunity for interaction with neighbours, reducing social isolation. Re-providing these spaces will encourage people to make use of them. • Ensure that good daylighting can improve the quality of life and reduce the need for energy to light the home. <p>The provision of an inclusive outdoor space which is at least partially private can improve the quality of life.</p>
<p>Will the policy have an impact on social, economic and environmental living conditions that would indirectly affect health?</p> <p>Would it affect housing, transport, child development, education, good employment opportunities, green space or climate change?</p>		<p>The objective would improve the quality of development on offer in the borough by ensuring that development meets a high standard based on robust evidence in relation to townscape, heritage, biodiversity, active travel etc.</p> <p>The Oldham Code could ensure that accessible and easily adaptable homes can meet the changing needs of current and future occupants.</p> <p>Development of the Oldham Code could ensure that sufficient space in dwellings is mandated to allow for the preparation and consumption of food away from the living room.</p> <p>The Oldham Code could ensure that on high/medium rise buildings, rather than having lifts at the front and staircases at the back of buildings hidden from view, to have them located at the front to encourage people including those that are able to use them.</p> <p>The re-use of heritage assets and enhancing assets can have a beneficial impact on socio-economic conditions, by increased job opportunities, training etc.</p>
<p>Will the proposal affect an individual's ability to improve their own health and well-being?</p>		<p>The objective would create better places, primarily through the introduction of the Oldham Code, but also by the introduction of other standards, such as accessibility to services by active travel modes, which is dealt with under objective 9.</p>

Screening Question	No	Yes
For example will it affect their ability to be physically active, choose healthy food, reduce drinking and smoking?		<p>The objective could, by ensuring the creation of The Oldham Code enable the development of higher quality development, which would ensure amongst other things, higher standards of biodiversity, access to green spaces and space standards of both internal spaces and gardens/balconies.</p> <p>The protection and enhancement of existing heritage assets give a point of focus to places and could, alongside the development of The Oldham Code and other objectives, ensure that people are able to travel by active modes to enjoy these heritage assets and their enjoyment as they are brought in to worthwhile use.</p>
<p>Will there be a change in demand for or access to health and social care services?</p> <p>For example: Primary Care, Hospital Carr, Community Services and Social Services?</p>		<p>Research has identified that the poor quality of housing stock in the borough is the primary driver for Primary and Hospital Care. It is considered that an improved quality of design and placemaking will result in a reduced demand for primary and hospital care.</p>
Will the proposal have an impact on global health?	No.	

10.9 The HIA of plan objective 9 is set out below.

Health Impact Assessment of Objective 9

Screening Question	No	Yes
<p>Will the proposal have a direct impact on health, mental health and well-being?</p> <p>Would it cause ill health, affecting social inclusion, independence and participation?</p>		<p>The objective will have a direct impact on health, mental health and well-being.</p> <p>Reducing congestion and encouraging active travel modes reduces pollution and improves air quality</p> <p>The plan objective could encourage walking and cycling which increases physical activity and reduces obesity, which is a particular issue for children and young people.</p>
<p>Will the policy have an impact on social, economic and environmental living conditions that would indirectly affect health?</p> <p>Would it affect housing, transport, child development, education, good employment opportunities, green space or climate change?</p>		<p>Reducing congestion reduces pollution and improves air quality.</p> <p>The plan objective will encourage walking and cycling which increases physical activity and reduces obesity, which is a particular issue for children and young people.</p> <p>Increasing digital connectivity, reduces the need for people to travel to and from work and enables more working from home. Meetings can take place online and thus reducing the need to travel long distances unless essential. Local meetings could be travelled to by active modes.</p> <p>The objective could ensure that developments should prioritise the access needs of cyclists and pedestrians. Routes should be safe, direct and convenient and barriers and gated communities should be avoided. Developments should be accessible by public transport.</p>
<p>Will the proposal affect an individual's ability to improve their own health and well-being?</p> <p>For example will it affect their ability to be physically active, choose healthy food, reduce drinking and smoking?</p>		<p>Increasing the use and availability of walking and cycling networks should help improve the health of the local population, especially if it is coupled with efforts to make it the easiest and most convenient choice, rather than the private car.</p> <p>The objective would encourage cycle parking and storage in residential dwellings, which can encourage cycle participation.</p> <p>The objective would ensure that space for pedestrians and cyclists should be given priority over commercial and private vehicles.</p>

Screening Question	No	Yes
<p>Will there be a change in demand for or access to health and social care services?</p> <p>For example: Primary Care, Hospital Carr, Community Services and Social Services?</p>		<p>If there is a switch to more active modes of travel, there should be a much-reduced demand on primary and hospital care. There will also be associated savings in the NHS as people will be healthier and less reliant on these services.</p>
<p>Will the proposal have an impact on global health?</p>	No.	

11 Summary of Habitat Regulations Assessment

- 11.1** A HRA Screening of Issues and Options was carried out by the Greater Manchester Ecology Unit (GMEU) in June 2021.
- 11.2** The purpose of the Screening stage of the Habitats Regulation Assessment (HRA) process is to initially identify the risk or the possibility of significant adverse effects on a European site which could undermine the achievement of a site's conservation objectives and which therefore might require further detailed examination through an appropriate assessment. If risks which might undermine a site's conservation objectives can clearly be ruled out (based on the consideration of objective information), a proposal will have no likely significant effect (LSE) and no appropriate assessment will be needed.
- 11.3** The HRA Screening of Issues and Options has screened the overall Vision and Objectives the Plan and the key Issues and Options described in the Plan.
- 11.4** The following European protected sites were screened in for Oldham:
1. Rochdale Canal Special Area of Conservation (SAC)
 2. Peak District Moors South Pennines (Phase 1) Special Area of Conservation (SAC)
 3. Peak District Moors South Pennines (Phase 1) Special Protection Area (SPA)
 4. South Pennine Moors (Phase 2) Special Area of Conservation (SAC)
 5. South Pennine Moors (Phase 2) Special Protection Area (SPA)
- 11.5** In practice sites 3, 4, 5 and 6 are contiguous and support similar species and habitat types. Together they encompass a very large area of the South Pennines and they are sometimes referred to collectively in the Assessment as the 'South Pennine Moors European protected sites'. Other European protected sites were considered to be too distant to fall under the influence of the Plan, or too distant for measurable effects to be discernible.
- 11.6** The following impacts were screened in to the assessment as considered to have the potential to cause likely significant effects on the European protected sites –
- Diffuse and localised air pollution including dust and odour
 - Human presence/disturbance
 - Emissions to water (surface or ground water) containing pollutants
 - Increase in surface water run-off
 - Loss of functionally linked land
 - Light spill or shading [relevant to the Rochdale Canal SAC only]
 - Introduction and spread of invasive species
- 11.7** The screening concluded that the parts of the developing Oldham Local Plan could result in Likely Significant Effects on European designated sites. Those effects could arise from –
- Air Pollution
 - Water Pollution
 - Recreational disturbance
 - Effects on functionally linked land
 - Shading
- 11.8** The parts of the Plan which could cause harmful Effects, and which have been Screened in, are –

-
- Plan Objectives 1, 2, 3, 4 and 7.
 - Issues and Options on Homes, Economy and Employment, Centres and Infrastructure.

11.9 The above Objectives and Issues must be subject to further Screening, and possible Assessment, when future proposals and details emerge from further iterations of the Local Plan.