

I am going to be adopted...

what does this mean?



Oldham
Council

Now that you are going to be adopted, you might feel a little scared and confused. We hope this guide will answer some of your questions and tell you a little bit more about what adoption means for you.

You may want to read this on your own or ask an adult like your foster carer or social worker to go through it with you.

This book belongs to: _____

Draw a picture of yourself in the space below.



About you

How you feel is very important and we want to make sure that you are happy, and that we choose the right family for you.

I like these things:

I don't like these things:

What is adoption?

Adoption is about belonging to, and growing up with, a new family when you cannot live at home.



Why am I going to be adopted?

All children need to grow up in a family with a parent or parents who will love them, look after them and care for them while they are growing up.

Sometimes your family are not able to do this, but this does not mean that they do not care about you.

What are adopters like?

Adoptive families come in all shapes and sizes. There may be just one parent or there may be two. Some have other children of their own. Some live in the town. Others live in the country. They could live in a big house or a small flat.

Your social worker will find out lots about you and will go and meet different families to find the one that is right for you.

Sometimes it takes a long time to find the right family, but your social worker will always talk to you about what is happening.



How does adoption work?

Step 1

You live with a foster family.



Start

Step 2

If your social worker is very worried that your family can't look after you the way you should be looked after, they will go and ask a special children's judge and special children's social worker called a guardian to help decide whether you can return home.

Step 3

If you cannot return home, a group of people called an adoption panel will tell the children's judge whether adoption is right for you. The special judge will also make sure that you get a chance to say what you would like to happen.

Step 4

If adoption is right for you, a court will allow your social worker to start finding you a new family. They aim to find you a new family within six months of the court decision. But sometimes this can take longer as it has to be the right family for you.

Step 5

Your social worker will talk to you about a new family and take great care to choose a family that suits you.



Step 6

When a new family has been found, the adoption panel also make sure that they are right for you.

Step 7

When your social worker has found you a new family, you will be able to ask lots of questions about them. They might even show you a special book or film about themselves.



Step 8

Now it's time to meet your new family. This will be at your foster family's house. It can be exciting but scary too.

Step 9

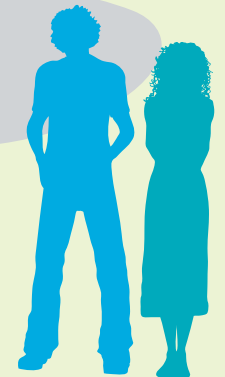
When you know enough about each other and are both ready, you will move into your new home.



Finish

Step 10

When you have lived with your new family for at least 10 weeks, your new family will ask a judge to make something called an adoption order. This means that you are now part of their family.



Published by Oldham Council

Oldham Adoption Service
Unit 10 – Whitney Court
Southlink Business Park
Oldham, OL4 1DB.

T: 0161 770 6605

E: adoption@oldham.gov.uk

As part of Oldham's commitment to a sustainable future, this booklet is printed on recycled paper made from 100% post-consumer waste. When you have finished with it, please recycle it.

All information correct at time of going to press. Published August 2009.

To obtain a copy of this document in an alternative format please call 0161 770 6605



Oldham
Council