

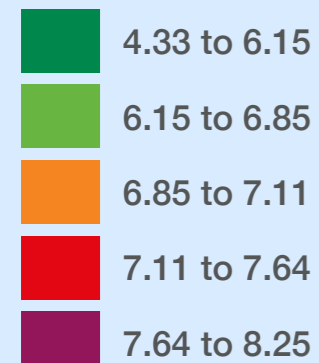
Big green survey – air quality and transport

A representative sample of 455 residents took part in the big green survey in September 2018

Residents in Saddleworth South, Waterhead, Hollinwood and Medlock Vale are more concerned about air quality.

Respondent concern regarding air quality

Mean score where 1 is not at all concerned and 10 is very concerned



The most common action was to turn the car engine off when waiting at lights or in traffic.

34%

Switch off car engine when waiting at lights or in traffic



20%

Walk more often



19%

Ride a bike



17%

Take the bus



11%

Take the tram

What residents are doing to make a positive impact on air quality?

54% of residents that took part in the survey said they take alternative forms of transport on a daily basis.

Only 13% stated that they never walk, cycle or take public transport.



How often do you travel by walking, cycling, or using public transport?

54%

Travel every day

37%

3 to 5 times a week

34%

Not very often

32%

1 to 2 times a week

30%

A few times per month

13%

Never

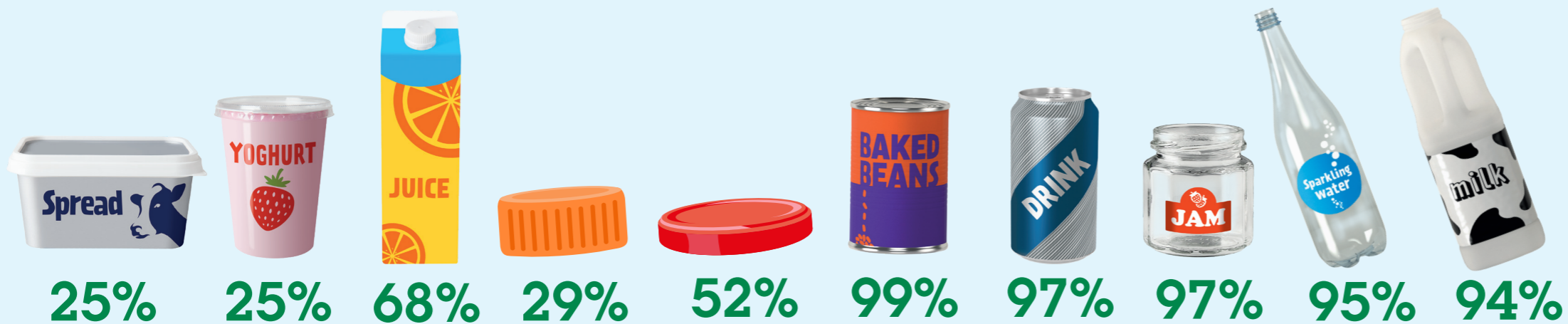
121 residents agreed that they took one or more actions to make a positive impact on air quality.

For top tips to reduce and avoid pollution visit www.cleanairgm.com

Big green survey – waste and recycling

A representative sample of 455 residents took part in the big green survey in September 2018

What type of containers do residents think are recyclable in Oldham?



Over 25% of residents thought butter containers, yoghurt pots, plastic lids and jam jar lids were recyclable when in fact they are not.

88% of residents know what can or cannot be recycled.
94.2% of them stated that they felt they were committed to recycling at home.

68% of residents follow the council's guidance and place juice cartons (tetra pak) in the blue bin for recycling.



93.7% of residents living in **East Oldham** were more likely to avoid plastic packaging when shopping compared to only **56.7%** of residents living in **Chadderton**.



93.7% of residents living in **East Oldham ward** were most confident in their knowledge of what can or cannot be recycled.

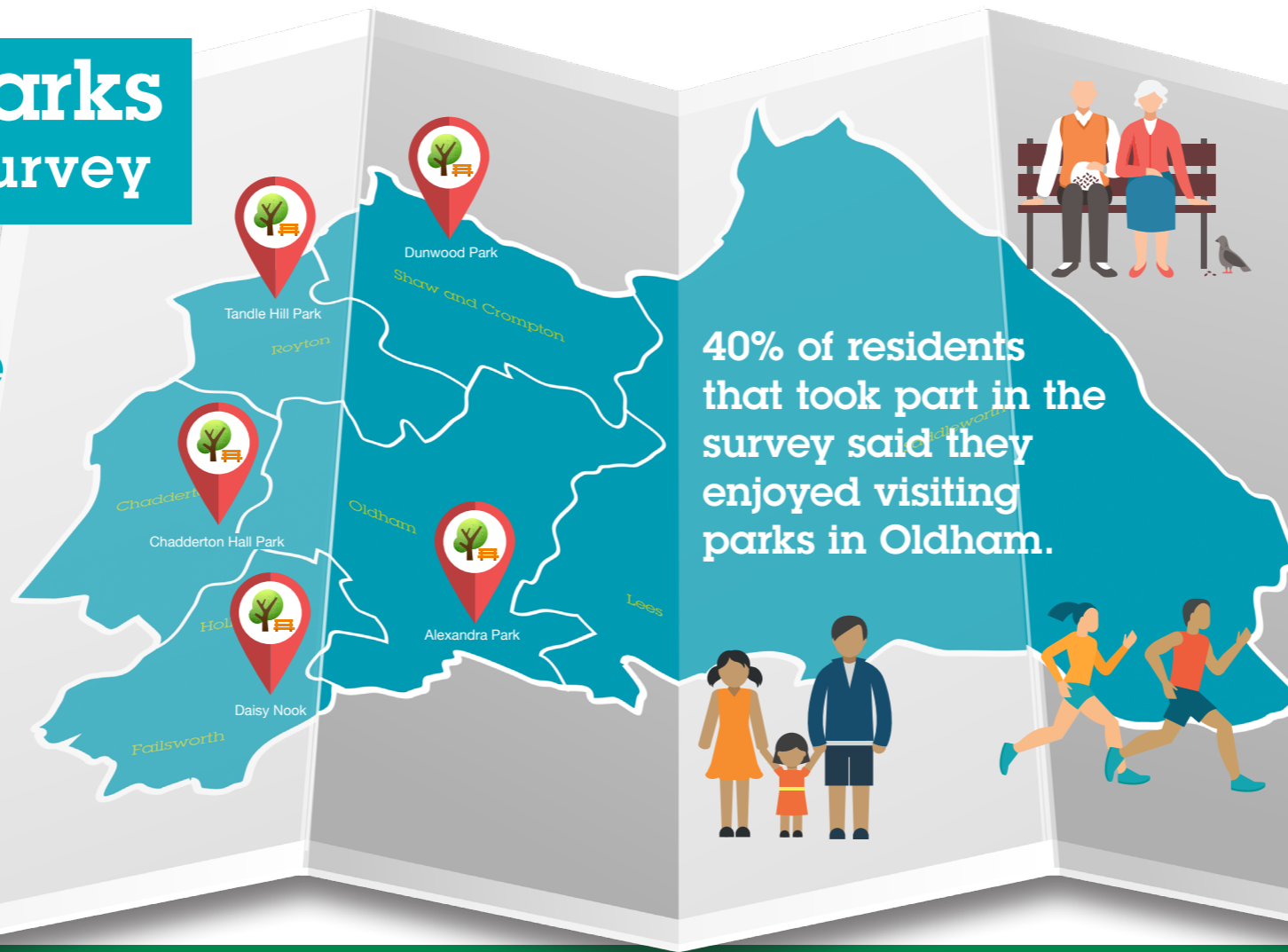
81.6% of residents living in **Shaw and Crompton ward** were less confident in this knowledge.

Big green survey – Oldham parks and green spaces

A representative sample of 455 residents took part in the big green survey in September 2018

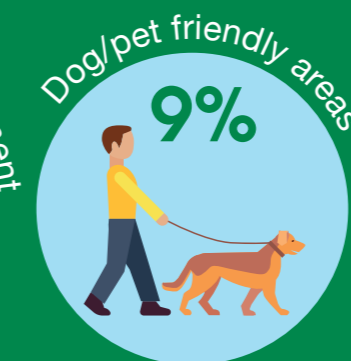
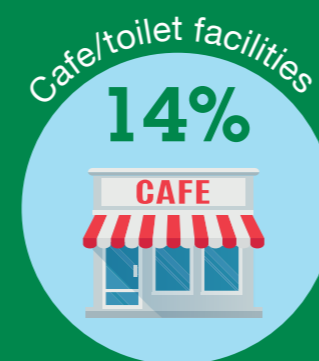
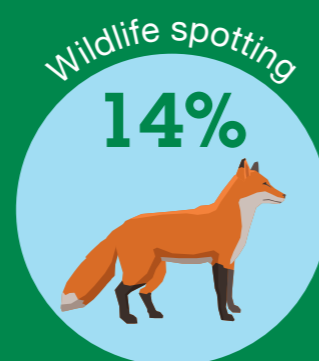
Out of the 28 parks highlighted by the survey

Residents are more likely to visit Tandle Hill Country Park, Alexandra Park, Chadderton Hall Park, Daisy Nook Country Park and Dunwood Park.



Residents from across the borough visit **Alexandra Park** where as the majority of visitors to **Tandle Hill Country Park** are local residents.

When choosing a park to visit in Oldham the biggest consideration is the importance of a pleasant walking route followed by plants and trees being the second biggest consideration.



For more information www.oldham.gov.uk/parks_and_green_spaces

Big green survey – Green spaces and wildlife

A representative sample of 455 residents took part in the big green survey in September 2018

Residents said that Dove Stone Reservoir was their favourite green space in Oldham, with Crompton Moor being the next most popular.

51%

Dove Stone Reservoir

31%

Hollingworth Lake

16%

Crompton Moor

3%

Greenacres Cemetery

1%

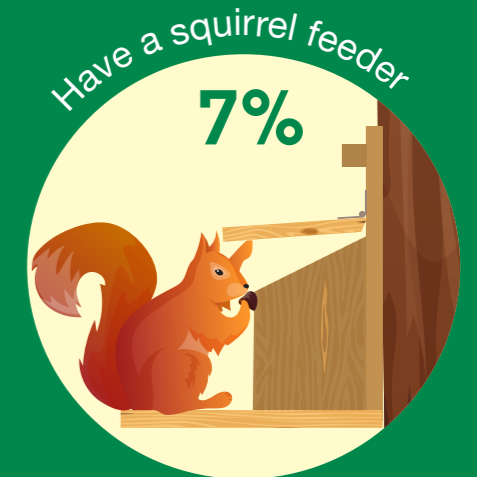
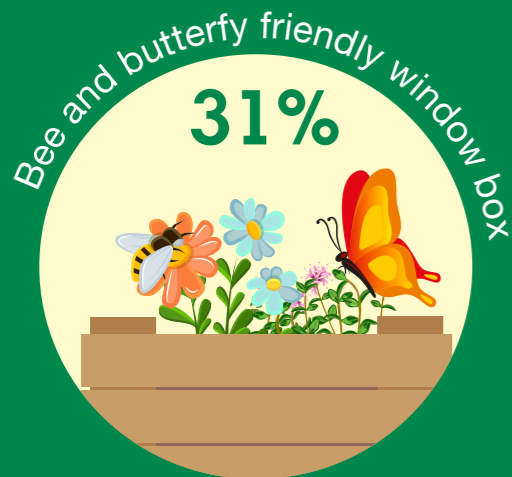
Failsworth Cemetery

68% of residents that took part in the survey agreed that Oldham is a dog friendly town.



13.1% of residents living in **Saddleworth West and Lees** were most likely to take actions to promote the wellbeing of wildlife compared to only 1% of residents in **Coldhurst**.

Three in ten respondents indicated that they take actions to promote the wellbeing of bees and butterflies by having wildflowers in a garden or window box. Similar proportions have a bird feeder.



For more information www.oldham.gov.uk/parks_and_green_spaces

Big green survey – Food growing

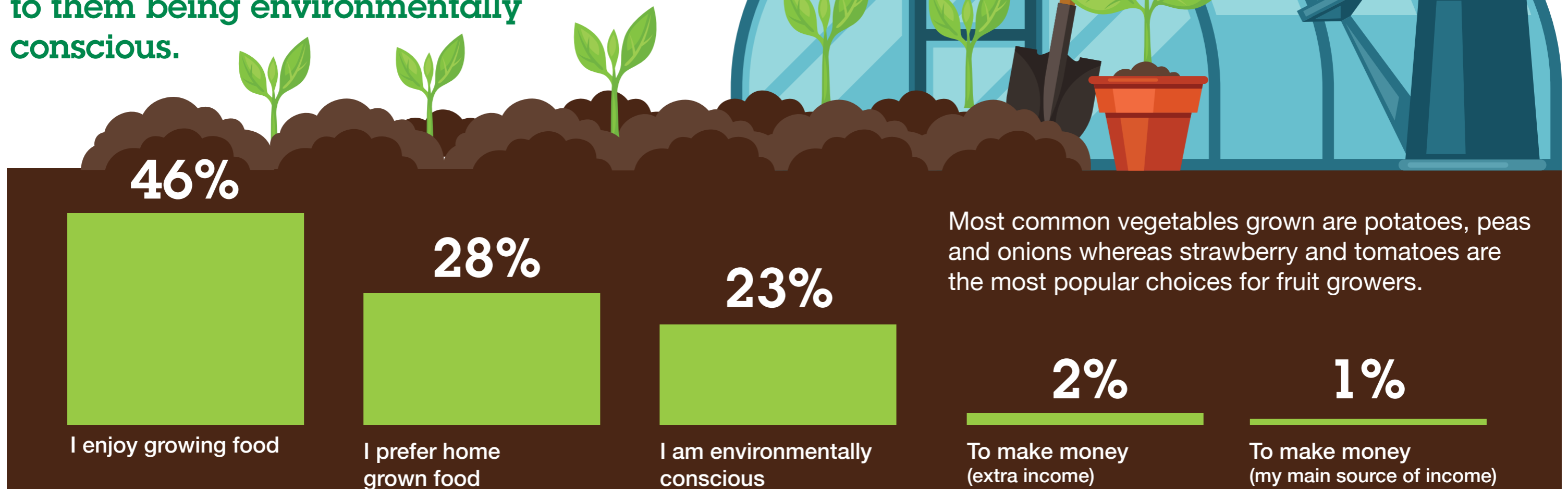
A representative sample of 455 residents took part in the big green survey in September 2018

46% of residents that took part indicated that they enjoyed growing their own food, whilst **28%** indicated that they prefer home grown food. Around a quarter **23%** informed us that their choice to grow their own food was due to them being environmentally conscious.

Residents in Saddleworth South, Waterhead and Crompton wards

are more likely to be aware of issues around food wastage.

The main reason for residents to grow their own food allowed them to educate their children/grandchildren about food and where it comes from. It also has a positive impact on resident's mental wellbeing.



If you're interested in growing your own fruit or veg visit www.oldham.gov.uk/greenoldham