

Designing for users with dyslexia



Do...

use images and diagrams to support text



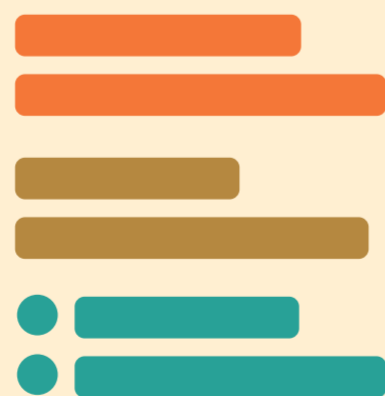
align text to the left and keep a consistent layout



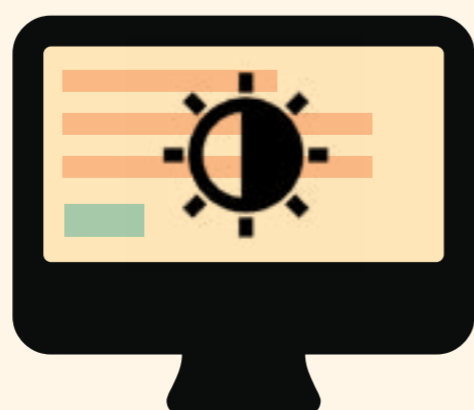
consider producing materials in other formats (for example audio or video)



keep content short, clear and simple



let users change the contrast between background and text



Don't...

use large blocks of heavy text



underline words, use italics or write in capitals

DON'T DO THIS

force users to remember things from previous pages - give reminders and prompts



rely on accurate spelling - use autocorrect or provide suggestions



put too much information in one place

