



**Oldham**  
Council



# Market Position Statement

The purpose of a Market Position Statement (MPS) is to provide information about a local adult social care market so that current and prospective providers understand the local context, what is likely to change and where opportunities might arise in the future.

## Overview

Oldham Council is committed to developing, stimulating and support a market which can provide safe, effective, high quality and value for money care and support for the residents of Oldham.

### Oldham's Market Position Statement does this by:

- Providing a link between local plans and commissioning intentions
- Providing an overview of our current market and demographic profile
- Describing strategic priorities
- Facilitating engagement with providers and stakeholders to build and shape provision in Oldham Council

## Commissioning Intentions

In Oldham we want to work with care providers to ensure we commission services that are good quality, financial sustainable and create pathways of care for our service users.

Commissioned services will be based on a strengths-based approach in line with our vision for adult social care, and we'll continue to look for opportunities to improve and develop.

There are a number of national drivers that are shaping the current and future provision of adult social care, including:

- White papers
- Care Act
- Continued financial pressures on local authorities to meet their statutory duties
- The creation of integrated care systems promoting integration and collaboration across health and social care (national agenda)

## Our vision

### Oldham Council – A Co-operative Council

Oldham is committed to developing a co-operative futures; one where citizens, partners and staff work together to improve the borough and create a confident and ambitious place. Put simply, becoming a co-operative borough is about everybody doing their bit and everybody benefitting.

In Oldham, working co-operatively can mean many different things. It's not just about delivering services through co-operatives or mutuals, it's about working in a way which helps to empower residents to take greater control of their own lives but also gets the maximum benefit from the resources that are available to the community and public sector.

It also encompasses a much broader range of approaches that reflect the values and ethos of co-operatives working. This means working in ways which are ethical, fair and deliver good social value as well as value-for-money. It also means giving residents the opportunity to work in collaboration with us to design and even help deliver services.

### Adult Social Care in Oldham

Supporting you to be independent, healthy, safe and well.

Adult Social Care, working with the rest of the Council, the voluntary sector, local communities and NHS partners will encourage and enable you, your family and community to stay healthy, safe and well. The aim will be to enable you to live as independently as possible. Where we need your support, we will help you to identify the best solutions. If you need more help but are not able to arrange your own care, the support we agree with you will help you to live the best life you can with the help you have around you.

### Working together we will:

- **encourage and enable you to stay well**

We will encourage you to do as much as you can with support from your family, friends and community networks.

We will work with other organisations to ensure you can access advice, find out about local support and other services to help you look after yourself in your community.

We will work with the local community, the rest of the Council, the voluntary sector and NHS partners to make local places healthy and safe

- **support you to help yourself**

We will provide information and advice about where you can find help when you need it. We will empower you to take control of your life.

We will help you to find support that increases your ability to manage any care needs you might have. We will help connect you to your local community.

- **work with you when you need help**

We will ensure you have access to social care services that meet your needs and are affordable for the Council.

We will ensure that if you need support, you will receive an assessment and services to enable you to live as independently as possible.

## How we work:

We will provide you with good quality information and advice to enable you to make informed choices about your care and support

- We will communicate clearly and consistently
- We will work together with people with care and support needs, carers, service providers, the NHS, voluntary groups, and local communities to develop effective social care services
- We will ask for feedback to improve what we do

## How we work to deliver the Vision:

### Person Centred and Strengths Based

- We will treat people as equal partners and with compassion, aiming for the best outcomes within the available means
- We will use a strengths based approach in all our dealings with the public to support them to safely look after themselves
- We will use positive risk taking to support people to take control of their lives
- We will be clear and consistent in our communications with the public

### Resilient

- We will be creative and innovative
- We will ensure staff have the required tools and skills to do the job
- We will support each other, helping to maintain our own wellbeing and that of the teams within which we work

### Accountable

- We will follow departmental and council policies and procedures in all that we do
- We will offer and receive constructive challenge to help improve the way we do things
- We will explain why we are doing things and evidence our decision making

### Working Together

- We will work in partnership together with people with care and support needs, carers, service providers, the NHS, voluntary groups, and the wider population to deliver effective health and social care outcomes

**Our approach will be underpinned by strict adherence to professional standards, and statutory responsibilities**

## Integrated Care System

In Greater Manchester the Greater Manchester Health and Social Care Partnership (GMHSCP) have been working as an ICS for the last five years.

The creation of a statutory Integrated Care Partnership and Integrated Care Board from April 2022 will formalise these arrangements and allow them to evolve to deliver even better health and care for the people of Greater Manchester. The GM ICS will operate at neighbourhood, locality and Greater Manchester level.

## Finance

Total gross spend in 2021/22 on adult social care services and provision was £58.97m and a further £15.976m on personal budgets

Due to reduction in funding from government and increasing demand for services like many local authorities Oldham is required to ensure that services are delivered efficiently. The Covid-19 pandemic has placed additional pressures on the budget, both as a result of the costs of our response and the loss of income from council tax, business rates and closed services. In total, there is a reported funding gap of £30m between 2020/21 and 2024/25.

### **Fees paid for adult social care services:**

The rates paid to CQC commissioned provision are reviewed annually. This review takes into account the annual increases faced by employers such as national living wage rises, increases to national insurance and contributions to pensions. The annual review also considers the cost of living increases and we review the Consumer Price Index with Housing related costs (CPIH). We consult with providers ahead of the fees being set for the forthcoming financial year.

This year (2022/23) Oldham, as are all local authorities in England, are required to complete the Fair Cost of Care exercise by October 2022. This will further inform the fees for social care provision in Oldham.

Also agreed in 2022/23 was the Council's commitment to implementing [Living Wage Foundation](#) (LWF) rates for all suppliers, including social care provision. Using information gathered in the Fair Cost of Care exercise, rates will be reviewed to enable providers to pay their staff the Living Wage Foundation rates, which are updated annually. All contracts will be updated to reflect a requirement for providers to pay their staff the LWF rates.

## Workforce

The adult social care workforce is the key enabler to deliver the right services, at the right time, to the right standard to meet the needs of Oldham's service users.

[Skills for Care](#) estimates for 2020/21 there were over 7,000 jobs in adult social care in Oldham split between the council at 3%, the independent sector at 74% and jobs working with direct payment recipients (personal assistants) at 24%.

Nationally, turnover in the adult social care sector is high and the workforce is ageing. In 2020/21 for Oldham Skills for Care estimated the staff turnover to be 18.9% which is lower than the regional average of 32.7% and lower than the national average of 34.4%. It is noted that not all turnover results in workers leaving the sector. Nearly a half (45%) of leavers remained in the adult social care sector, therefore although employers need to recruit to these posts, the sector retains their skills and experience.

## Quality Assurance and Improvement

Under our Care Act 2014 responsibilities as an authority, we have a responsibility for strategic oversight of the adult care and support market in Oldham. Quality assurance and improvement plays an integral role within this.

The approach we take to quality assurance and improvement is very much a partnership one. The emphasis is on working with providers to ensure continuous improvement across our services.

The Quality Assurance and Improvement team works closely with colleagues across the Oldham Health and Social Care system to share intelligence and lever in specialist support when it is required.

In terms of monitoring approach, for the CQC registered providers this will include a combination of announced and unannounced visits, a review of data in relation to safeguarding, attendances at hospital, and capacity tracker information.

## Social Value

As a [Co-operative Council](#) we are committed to acting in a socially responsible way and influencing others with whom we work with to do the same.

In accordance with the Social Value Act 2012 we must consider social value in all our decisions; about how we spend this value and in addition to ensure that who we work with has the potential to make contributions to delivering in a co-operative borough.

We have a social value procurement framework which seeks to secure the maximum possible value from every pound of public money that is spent. The framework seeks to achieve this by ensuring that social, economic and environmental outcomes are systematically incorporated into procurement practices so that we can achieve greater impact from each and every contract. The framework is divided into four themes:

1. Jobs, growth and productivity
2. Resilient communities and a strong voluntary sector
3. Prevention and demand management
4. A clean and protected physical environment

### Key Partnerships

- Integrated Care System
- Oldham System Delivery Board/Provider Collaborative
- Greater Manchester Health and Social Care Partnership
- Care Quality Commission
- Health and Wellbeing Board
- Oldham's Partnership Boards:
  - ◇ Learning Disability Partnership Board
  - ◇ Autism Way Forward
  - ◇ Carers Partnership Board
  - ◇ Dementia Partnership Board
  - ◇ Mental Health Programme Board

## About Oldham

You can find out more about Oldham's demographics and neighbourhoods by following the links below. In

[Profile of Oldham | Oldham Council](#) the population and household information is presented.

In 'Neighbourhoods' [Neighbourhoods | Oldham Council](#) the five districts which Oldham is broken down into, North, Central, West, East and South are presented and includes details for District Coordinators and elected councillors.

## Our data

Demographics: (ref: POPPI and PANSI (ONS data))

- There are approximately 238,500 people living in Oldham in 2020. With the population set to increase by 5% to 249,400 by 2030.
- 18-64 year olds make up 59% of the population (140,100)
- There are approximately 38,800 people aged 65 and over residing in Oldham.
- By 2030 the number of residents 65+ is predicted to increase by 16% to 45,200.
- Oldham has a higher proportion (22.5%) of non-white Black and Minority Ethnic (BME) residents than in Greater Manchester (16.3%), the North West (9.8%), and England (14.6%). This proportion has increased from 13.5% in 2001.
- Oldham has a higher proportion (22.5%) of residents aged under 16 and proportionally fewer (15.7%) aged 65 and over. The overall structure of the population has shifted downwards due to the growth in Oldham's Pakistani and Bangladeshi communities, which have younger age profiles.

The data included in this section of the MPS refers to 2010's ONS. Once the Office of National Statistics (ONS) has published the final release of 2021 Census this section will be updated.

More information available via [Oldham in Profile](#).



## People

### People with Learning Disabilities

In 2020 there were estimated to be 4,229 adults aged 18+ with a learning disability in Oldham (POPPI + PANSI). This number is projected to increase to 4,500 by 2030, a 6.4% increase.

Further to this, there are approximately 850 people with learning disabilities and/or autism currently open to social care in Oldham.

### People with Autism

In 2020 there were estimated to be 1,753 adults aged 18+ with an autism spectrum disorder in Oldham (PANSI and POPPI). This number is projected to increase to 1878 by 2030, a 7.1% increase

### People with Mental Health conditions

Mental Health statistics from PANSI tell us that that in 2020 there were 20,252 Oldham male residents predicted to have a mental health disorder. This figure is expected to rise to 21,185 in 2030 (an increase of 4.6%).

The same data tells us that there were 25,344 women with a mental health disorder in 2020, and again this is set to rise to 26,136 in 2030 (an increase of 3.1%).

We know that women are more likely to have mental health problems than men and that younger women are at particularly high risk. In addition, we also know that women are more likely to access mental health services; they tend to have better social networks than men, find it easier to confide in their friends and are more likely to have been treated for a mental health problem. (Source; mental health foundation). In comparison, we know that men are less likely to access psychological therapies than women and that men aged 40-49 have the highest suicide rates in the UK.

### People with Dementia

There are an estimated 1.1 million people living with dementia in the UK currently with this number projected to increase to over 2 million by 2051.

In 2020 there were an estimated 2,267 people over 65 living with dementia in Oldham, by 2030 this figure is set to rise by 66% to 3,756. By 2030 it is estimated that there will be 2,432 of people living with severe dementia. (POPPI).

### Carers

Following the 2011 Census it was estimated that there are approximately 24,000 carers living in Oldham. Whilst carers will be able to access a range of services and support without adult social care being aware, we know that in the last five years only 3,297 carers who care from an adult had come forward to receive a first carers assessments.

In 2018 Oldham published the three year [Carer's Strategy](#) which was developed in partnership with carers from across the borough and services from across health and social care provision. The Strategy outlines the vision for Carers in the borough, to be: carers are recognised, supported and encouraged to maintain their own health and wellbeing and provided all opportunities to access further education and maintain employment should they wish to do so.

The Carer's Strategy sets out six priorities and how they will be achieved.

### **Coronavirus (Covid-19) impact:**

The Covid-19 pandemic has had a significant impact on social care providers operating across the country and Oldham's providers were not sheltered from this. Our providers have faced an extremely challenging operating environment. As well as the physical toll, the pandemic has also adversely affected many providers financially.

From a Care Home provider perspective, the reductions in their occupancy levels over the past two years has provided a level of uncertainty for their future. The Adult Social Care commissioning team in Oldham continues to work with providers across the borough in order for them to best meet the needs of Oldham's residents.

The impact of Covid is likely to have a long-lasting effect on people's mental health, and it is doubtful that we have seen the full impact of this just yet. We know that those who suffered with poor mental health before the pandemic are more likely to have been affected, and experienced their mental health deteriorate as a result of the effects of Covid including isolation, bereavement, loss of income, lack of routine, and general fear about the impact of the pandemic. Our adult social care services need to be equipped to be able to support people effectively with their mental health conditions.

### **People accessing care and support:**

Demand for and the cost of adult social care are both increasing and add to the reasons why a preventative and strengths-based approach is critical. It is anticipated that reforms to national charging policies and the Fair Cost of Care exercises will add further demand and costs to Adult Social Care services.

<b>Service type</b>	<b>Number of service users (data taken May 2022)</b>
Residential Care	609
Nursing Care	185
Home Care	1,185
Supported Living	174
Extra Care Housing	157
Shared Lives Support	50
Mental Health Rehab	19
Personal Budgets	1,270

### **Personalisation and direct payments:**

In 2021/2 1,170 Oldham residents were in receipt of direct payments, equalling 27% of all adult social care service users receiving long-term support.

## Continuing Healthcare funded services (taken May 2022):

Care Purpose (Adults)	Home Care (including Personal Health Budgets)	24 hour Care	Total number of patients
Standard CHC	27	38	65
Fast Track CHC	8	22	30
FNC	0	168	168
Joint Funding (excluding S117)	6	50	56
S117	79	35	114

## Market overview

Oldham currently has 43 care homes registered with the Care Quality Commission (CQC) to operate in Oldham.

### Home care (November 2021 data)

Oldham has 31 Community Care providers registered with the CQC to deliver care in Oldham. The majority of the providers are small, local, independent organisations operating in Oldham and neighbouring localities, and we are aware that around two thirds of the providers also deliver home care in other local authority areas.

Ten providers are part of the council's Care at Home framework contract.

### Care Homes (April 2022 data)

Of the 44 care homes:

- The total 'bed base is 1,786 with average occupancy at 88%
- At any one time in 2020/21 around 1,570 people are living in care homes in Oldham on a permanent or temporary basis
- It is estimated that there are around 450 (15.7%) people in care homes who are self-funders
- 36 are CQC 'Good'
- Eight are CQC 'Requires Improvement'
- Ten are registered to provide both residential and nursing care with only 4% (94 beds) for nursing only.

## Extra Care Housing

We successfully re-commissioned our Care at Home and Extra Care Services in 2019 following a competitive approach to market in late 2018. Lot 1 was advertised for Care at Home services and Lot 2 was advertised for Extra Care Housing services as a flexible purchasing system. The current arrangements are up for renewal in April 2024, with the option to extend until 31st March 2026.

We have a single approved provider for Extra Care Housing services, delivering across six schemes located across the borough.

There are six extra care housing schemes in Oldham offering 255 units, they are:

Aster House	33 flats
Charles Morris	30 flats
Hopwood Court	36 flats
Old Mill House	42 flats
Tandle View	60 flats
Trinity House	54 flats

Approximately 204 people are supported in extra care provision with 109,858 hours are delivered per annum.

## Supported Living

There are around 170 people in Oldham currently living in supported living services. Supported living in Oldham is undertaken by 7 providers. The first is MioCare, the Council's in house provision, supports people with learning disabilities and autism. They are the preferred provider for people with complex needs. There is a mix of apartment style living and shared house provision across Oldham with individuals receiving bespoke levels of support, and access to 24-hour wrap around (or background support).

Our current framework supported living offer was introduced in 2016. There are six providers on the framework which is an ongoing contract being reviewed in 2022. Provision is purchased on a core and flex model. This framework relates to core costs only that are paid through the adult social care operations budget. The core cost of services for 2022/23 financial year are around £4 million. Flex costs are based on individual needs and are adjusted as required.

Our framework providers are a mix of national and regional organisations who are committed to supporting people in their own homes.

There are approximately 70 supported living properties and we currently support around 170 people in their own tenancies. We are committed to keeping people in Borough, close to their families, friends and meaningful services. However, very occasionally we house people out of borough, where a service is deemed to be best for them. We currently have approximately 35 people with learning disabilities living out of Oldham. Our ambition is to continue to work with our residents, to meet their wants and aspirations and to live as closely to their families and friends as possible, but acknowledge, that occasionally, the right home and support is out of borough. We continue to review the needs of people to ensure that the right accommodation and support models and pathways are as close to home as possible.

Our framework providers work with people who have non-complex needs. However, we occasionally spot purchase care from other providers via the Greater Manchester Dynamic Purchasing System (GMDPS). This is when we are unable to place someone with a formally commissioned provider in Oldham.

**Supported employment** – It is recognised that our currently employed figures do not reflect our ambitions for people with learning disabilities and/or additional needs. With this in mind, the Council is currently working with Pure Innovations to support people with learning disabilities and/or autism into employment opportunities. This includes full or part time work with a range of organisations and comes with the support of work coaches to support individuals get the best out of their work.

**Get Oldham Working (GOW)** – is the Council's employment arm and they work closely with local Job Centres

and with a range of people of all ages and abilities. They can support with CV writing, job searches and mentoring to get people into work.

Our ambition is to grow our learning disability and autism employment rate by working with regional and local providers. We are committed to ensuring people have access to opportunities to work and training to enable them to live as independently as possible.

Further information on the support available through the Get Oldham Working team can be found [here](#).

### Advocacy services

Advocacy is a process of supporting and enabling people to express their views and concerns, access information and services, defend and promote their rights and responsibilities and explore choices and options.

Oldham Council currently commissions the following statutory advocacy services:

Advocacy provision	Provider	Joint contract?	Contract expires	Average cases per annum
Independent Mental Capacity Advocacy (IMCA)	NCompass	Joint with Tameside and Stockport Councils	March 2025	280
Independent Mental Health Advocacy (IMHA)	Voiceability	No	September 2022 (with provision to extend for one year)	267
NHS Complaints Advocacy (NHS ICA)	Cloverleaf	No	March 2025 (with provision to extend for a further 4 years)	261
Care Act Independent Advocacy	Voiceability	No	September 2022 (with provision to extend for one year)	36
Healthwatch Oldham	Action Together	No	March 2025 (with provision to extend for a further 4 years)	705
Independent Learning Disability and Autism Advocacy	OPAL	No	September 2022 (with provision to extend for one year)	174

A focus for our advocacy services in Oldham is to support self-help whereby information can be clearly presented and advice provided. We are also working with our providers to support volunteers and champion programmes in their advocacy services.

### Adult Social Care and Housing

Setting out a 10 year vision for adult social care, the recent publication of the Adult Social Care White Paper '[Putting People at the Heart of Care](#)' has placed a greater emphasis on housing, care technology and innovative models of care. The white paper provides information on funded proposals that are due to be implemented over three years (2022 – 2025).

## **Housing Related Support**

Housing Related Support services help to manage demand away from higher cost provision and underpins many other interventions. Support is provided to assist individuals and families to obtain and then to sustain independent living in the community: support workers help people to address issues preventing this – such as lack of life skills, or mental health and substance misuse issues. Support is either provided within short-term supported housing or through visiting support to people's own homes.

**Current offer:**

In Oldham the services providing short-term supported housing operates as an integrated system across three pathways:

- Young people
- Women's
- Generic services

Access and move-ons are overseen by a Central Access Point based in the Council. Collectively these three services provide 110 bed spaces; however, during any given period some households will cease to need this level of support and be re-housed, for example, in 2019/20 the services supported 219 households.

These services were re-procured in 2022 at a cost of £960k per annum for a period of at least three years and are provided by two organisations, De Paul UK and Regenda, from the charitable and Registered Provider (Housing Association) sectors.

## **Equipment and Adaptations**

A purpose-built home with the necessary adaptations can be the defining factor in empowering a disabled person to take control and responsibility for their health care journey whilst maintaining their independence. Changes to government policy and medical advances have enabled individuals of all ages with complex care needs to receive health care at home, in a care home or any kind of supported living thus increasing the demand for adaptations and well-designed homes.

**Current offer:**

**Minor Adaptations:** provision includes grab rails and handrails which enables a person to return home from hospital and move safely around their home.

**Larger adaptations:** funded from the Disabled Facilities Grant (DFG) and includes provision of level access showers, fitting equipment such as ceiling track hoists and stair lifts. During 2021-2022, the DFG service has so far successfully completed 153 adaptations relating to building works, 42 ceiling track hoists and 94 stairlifts

**Integrated Community Equipment Service:** provision includes equipment such as pressure care mattresses, hoists etc which is prescribed by a range of professionals, such as occupational therapists and community nurses. By the end of the financial year for 2021-2022, Oldham Care's will have invested £1.933 million for this service.

**Community Alarm and Response Helpline:** operates 24 hours a day, 365 days a year and offers an emergency call system for use by people in their own homes with a follow up attended response service if required

## Supply and demand summary

Service Type	Supply	Demand	Summary
<b>Living Well</b>			
Early Intervention and prevention	Supply: Increasing	Demand: Increasing	We will be looking at opportunities to increase our offer around early intervention and prevention, developing support in our communities and ensuring people utilise community assets wherever possible
Direct Payments	Supply: Increasing	Demand: Increasing	We will be reviewing the direct payments in place, and where there are arrangements in place for strategically commissioned services, we will ensure the appropriate transfers are made and discussions with the individuals involved
Recognised Provider List	Supply: Increasing	Demand: Increasing	We want to establish a Recognised Provider List to ensure that those people who fund their own care or use a direct payment to manage their care arrangements can select providers who have gone through some due diligence with the local authority
Individualised Service Funds	Supply: Developing	Demand: Stable	We are developing our systems to enable more Individualised Service Funds in the borough.
Reablement	Supply: Increasing	Demand: Increasing	In line with the refreshed Adult Social Care Target Operating Model, we are working to increase the capacity of the reablement service in order to support more people to live independently in the community
Housing and accommodation	Supply: Increasing	Demand: Increasing	We are reviewing housing and accommodation available in the borough to ensure that there is the right type and amount of accommodation with support for younger adults and those with complex and challenging behaviours
Day opportunities	Supply: Stable	Demand: Stable	Oldham has a range of day opportunities to access for people with a learning disability. We want to work with day service providers with a view to creating a 'Recognised Provider List'
Respite – learning disabilities	Supply: Increasing	Demand: Increasing	We are reviewing the current supply and demand of our respite services in Oldham
Autism spectrum conditions	Supply: Increasing	Demand: Increasing	We are reviewing our strategy for people with autistic spectrum conditions, improving and developing services to meet their needs
Community equipment	Supply: Increasing	Demand: Increasing	We are reviewing our current offer around equipment to ensure opportunities are maximised to people to remain as independent as possible for as long as possible
Assisted living technologies/digital solutions	Supply: Increasing	Demand: Increasing	We will look at how service users and care providers can use technology to help people to meet their care outcomes
Support for unpaid carers	Supply: Increasing	Demand: Increasing	We will be refreshing our carers strategy and developing plans to reach more people and improve the range of support offered to unpaid carers in the next couple of years.

Service Type	Supply	Demand	Summary
<b>Ageing well</b>			
Residential care	Supply: Decreasing	Demand: Stable	We will reduce the number of standard residential care beds we have across the borough to increase occupancy and quality in other homes and provide alternative care options for older people
Nursing care	Supply: Increasing	Demand: Increasing	We will continue to work with providers to develop nursing capacity across the borough, including complex dementia provision
Dementia care	Supply: Increasing	Demand: Increasing	We will continue to work with providers to improve our dementia offer to service users and their families
Intermediate care/ reablement	Supply: Stable	Demand: Increasing	We want to support more people requiring intermediate/reablement care in their own home
Day services	Supply: Stable	Demand: Decreasing	We are working with existing providers for sustainable offers in the community
Home Care	Supply: Increasing	Demand: Increasing	We continue to work with providers and their support of people in the community. We are considering a complex lot as part of the framework which would help in allocating care packages that are 'complex', for example, support for people assessed as end of life.
Extra Care Housing	Supply: Stable	Demand: Stable	As we start to reduce residential care, we anticipate the demand for extra care housing to increase. We will review our extra care accommodation to ensure that it meets the needs of Oldham residents. This includes considering night time support.

## Commissioning Priorities

**Nursing care:** more nursing care provision is required across the borough to address local and regional shortages

**Dementia services:** more complex support for people with dementia is required in Oldham including specialist nursing care and respite options for older people with complex care and dementia needs.

**Crisis support:** more urgent and crisis care services are required including accommodation-based services in particular for people with complex needs and behaviours that challenge.

**Autism support services:** We are seeing an increase in the numbers of younger adults (often transitioning from children's services) with an autism diagnosis or awaiting the outcome of an assessment and requiring care and support and accommodation. We are refining the needs for this service, including a projection of how many people are likely to require this support with the aim of tendering in 2022/23.

**Supported Living:** We would like to build in more flexibility of provision in the borough, so we are able to access support for people quickly in modern, purpose-built accommodation, including temporary, emergency placements if required. This would also include widening the market of provision, beyond our current providers which will be addressed through tendering activity in 2022/23.

**Advocacy:** We are aware that demand for more general advocacy is increasing and we continue to work with our advocacy providers to further understand people's needs. This is hoped to be addressed through the implementation of the Target Operating Model which will include a greater emphasis on easily accessible information, advice and guidance.

**Housing and Care:** through the white paper '[Putting People at the Heart of Care](#)' a greater emphasis has been placed on housing, care technology and innovative models of care. Therefore, from the development stage greater collaboration between developers and partners to design and build housing solutions that are innovative and flexible.



**Individualised Service Funds (ISFs):** the council is exploring ways to formally introduce Individual Service Funds (ISFs) into a range of services for those with Care Act eligible needs. ISFs are constructed in a similar way to commissioned services, representing a middle ground between Direct Payments and traditionally commissioned services. On this journey we are looking for engagement from organisations who show a commitment to personalisation.

## Messages to the Market

**Adult Social Care Reform:** the Government has announced wide-ranging reforms of adult social care, including the way social care is paid for which is due to come into force in October 2023. To read the full white paper visit [gov.uk](https://www.gov.uk)

**Fair cost of care exercise and Market Sustainability Plan:** both activities are due to be completed by Autumn 2022. Care providers will be asked to complete a financial modelling exercise, covering most aspect of delivery and organisational management for the past two financial years. This is an opportunity to ensure that the government understands the true value of social care, moving towards paying the fair cost for care. The Market Sustainability Plan will identify the key risks to ensuring we have a sustainable market that is fit for the future, and the plans to address those risks.

**Living Wage Foundation commitment:** Oldham Council is committed to its suppliers paying their employees the Living Wage Foundation rates which are annually reviewed. All contracts with Adult Social Care providers will include this stipulation from Autumn 2022 and periodic reviews will be undertaken to ensure adherence to this. Paying the Living Wage rates plays a vital role in addressing low pay and boosting household income, which in turn will have an impact on Oldham's local economy.

**Adult Social Care Target Operating Model:** We are implementing a new Target Operating Model, which will place an increased emphasis on information and advice, prevention, enablement and the use of assistive technology and equipment to support people to remain well and independent at home for longer.

**Blended roles:** we aim to expand the blended roles offer in care at home services operating across Oldham. This involves domiciliary care workers working alongside district nurses and being trained to provide lower-level healthcare services will enable people to experience more joined up care whilst at the same time aiming to improve workforce retention by offering progression and development.

### **How to engage with us/co-production**

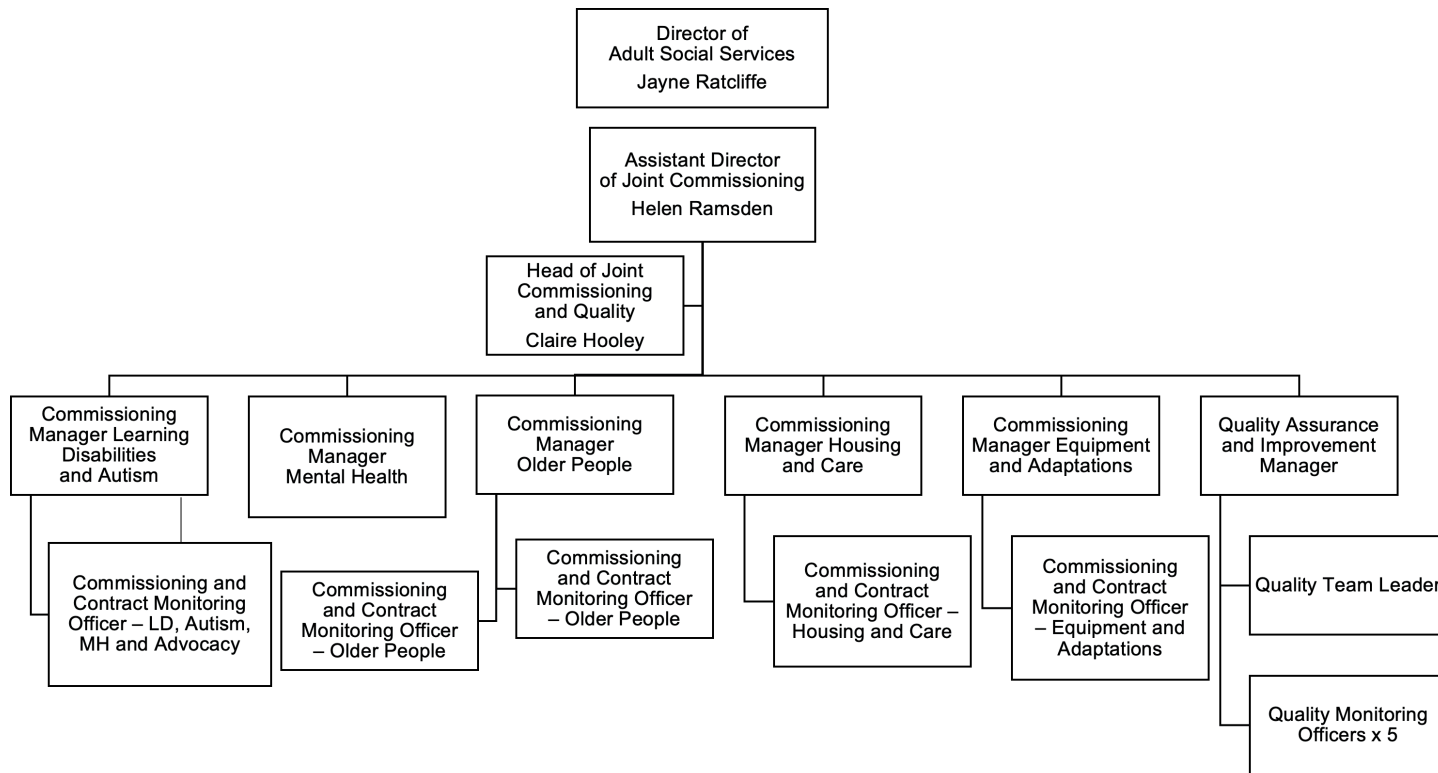
We appreciate your interest because your views and opinions really matter to us. We recognise the importance for listening to people who provide and receive care as well as taking account of emerging best practice.

We have regular partnership boards and forums with service providers, further details can be obtained via email by contacting the Adult Social Care inbox on [ASCCommissioning@Oldham.gov.uk](mailto:ASCCommissioning@Oldham.gov.uk)

We will ask you to be involved in specific pieces of work and take part in consultations to ensure the work we are doing captures your ideas, builds on best practice, develops new innovations together and supports the market.

Get involved – if you are looking to develop your business or improve your services, we hope that this document will provide information which could support your business decision making.

## Meet the commissioners



Structure from 1 July 2022

## Useful links

Association of Directors of Adult Social Services: [Adass](#)

Oldham CCG: [NHS Oldham CCG](#) [soon to be ICS] Greater

Manchester Health and Social Care Partnership:

[Greater Manchester Health & Social Care Partnership | Devolution \(gmhsc.org.uk\)](#)

Greater Manchester Combined Authority:

[Home - Greater Manchester Combined Authority \(greatermanchester-ca.gov.uk\)](#)

Skills for Care:

[Home - Skills for Care](#)

Oldham's Joint Strategic Needs Assessment (JSNA):

[Oldham Joint Strategic Needs Assessment \(oldham-council.co.uk\)](#)

Plans and Strategies

[Strategies, plans and policies | Oldham Council](#)