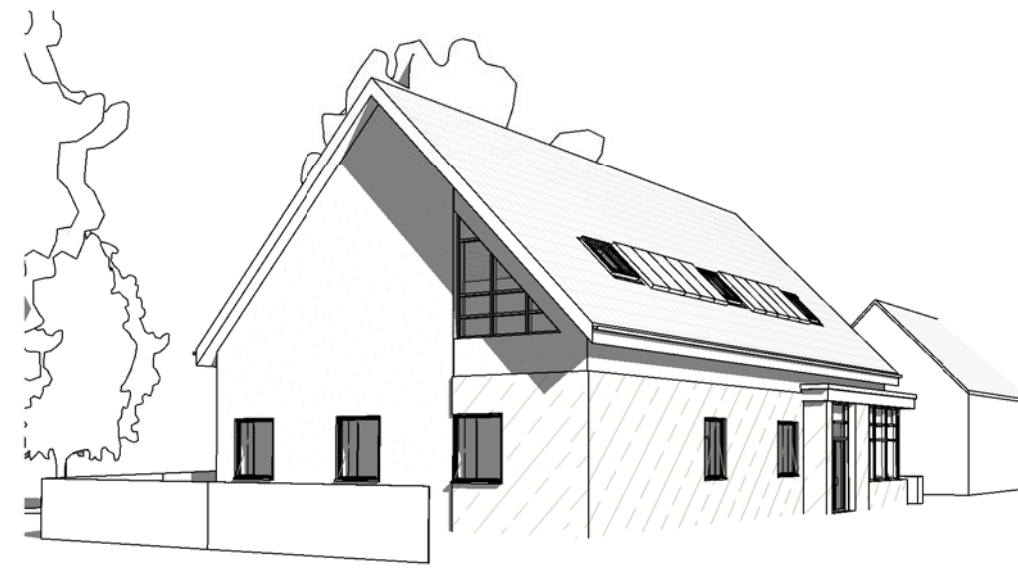


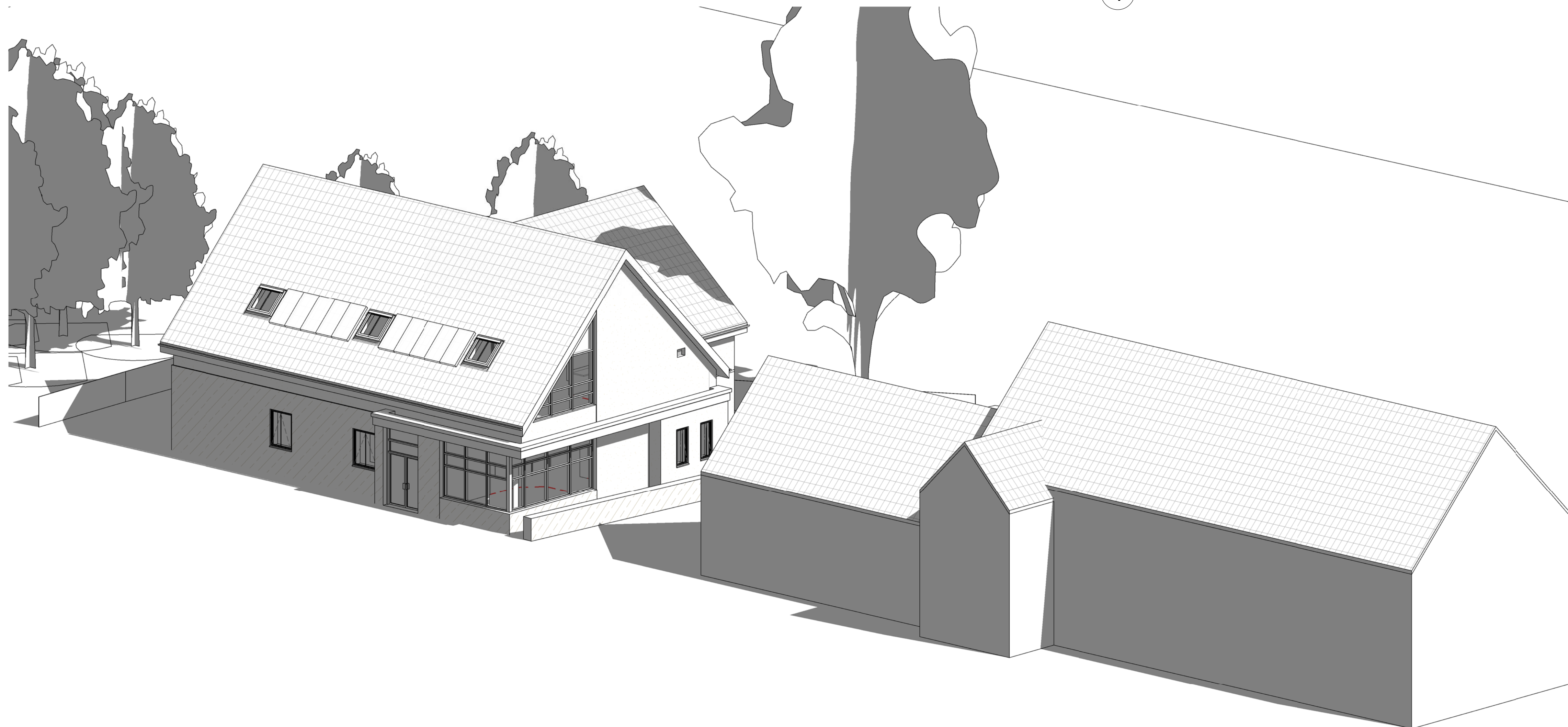
2 3D Front Elevation



3 3D Rear Elevation



4 3D Entrance



1 3D View of Proposed Health Centre and Existing Church

F	03.12.12	mes	Dwg renumbered, IK Comments incorporated
E	20.11.12	mes	Layout amended to reduce impact on tree RPA
D	12.11.12	mes	Updated to SE Proposals
C	23.10.12	mes	Updated to incorporate DT comments
B	15.10.12	mes	Updated to incorporate 1st floor
A	20.08.12	mes	Updated following client discussions
rev	date	drawn by	comments

client
Saddleworth Medical Practice

project
Delph Health Centre

drawing
3d Visualisation

drawing number
AM11052 - 02- P07

revision
F

date
Aug 12

scale
@ A1

drawn by
IAR

bim reference
AM11052-BSA...2Storey-CENTRAL

blue sky
architects

Building 1000 Kings Reach Yew Street Stockport SK4 2HG
t 0161 4750220
f 0161 4771748
w www.blueskyinspired.co.uk
offices also in Accrington