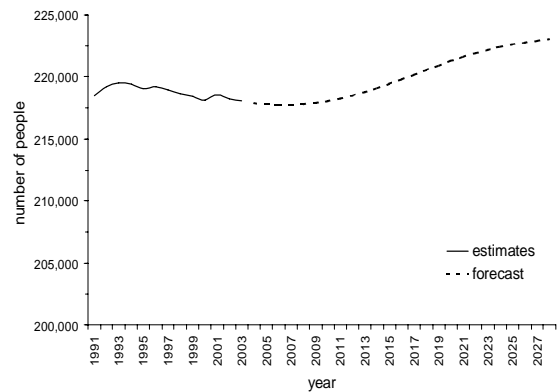


Population forecasts for Oldham

This document presents population forecasts for Oldham up to 2028.¹ Information about births, deaths and migration since 1991 were used to produce a set of population estimates to 2003. The population of the Borough has then been projected forward to the year 2028, under a set of assumptions concerning likely future trends in births, deaths and migration. Estimated total populations have been made consistent with the mid-2003 based ONS projections for Oldham. Age structures of the largest ethnic groups (White, Pakistani, Bangladeshi, Indian, Black and 'Other') are based on the results of the 1991 and 2001 Censuses. The results provide a guide to the possible future size and distribution of population by age, sex and ethnic group.

Figure 1. After 2006, Oldham's population is expected to increase annually, reaching a maximum of about 223,100 people in 2028



Oldham's population was estimated to be about 217,800 in 2005. After decreasing slightly in 2006, the population is expected to increase (Figure.1). But the pattern of population change differs between the ethnic groups (Figure. 2).

Figure 2. Falling numbers of white people are expected from 2001 to 2028 - counterbalanced by increasing numbers of people of Pakistani and Bangladeshi heritage

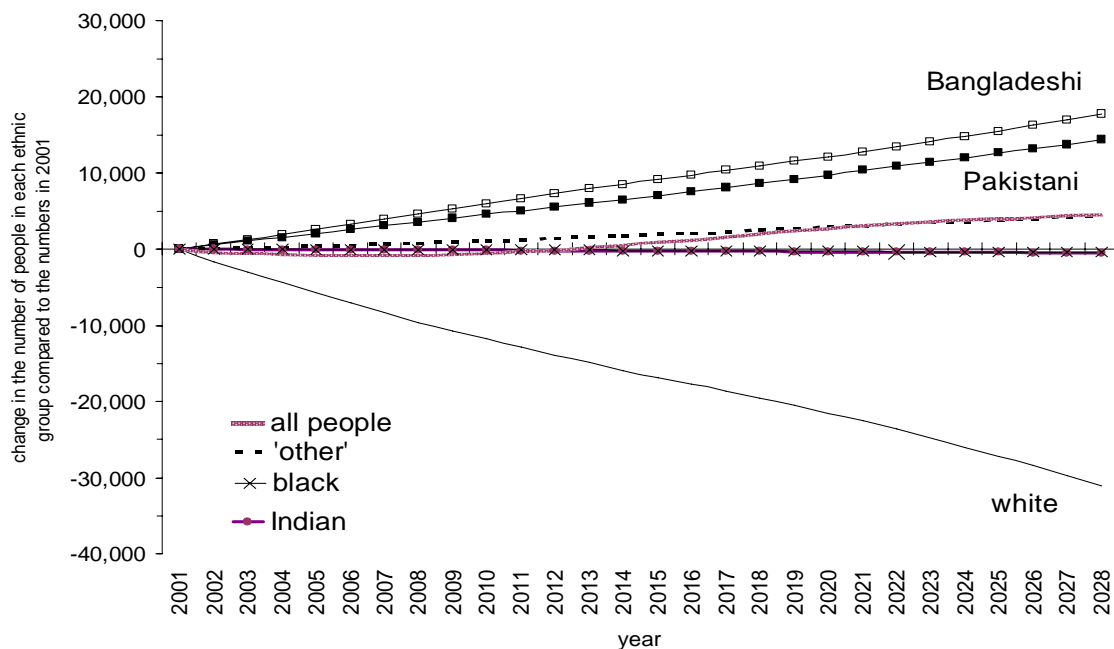
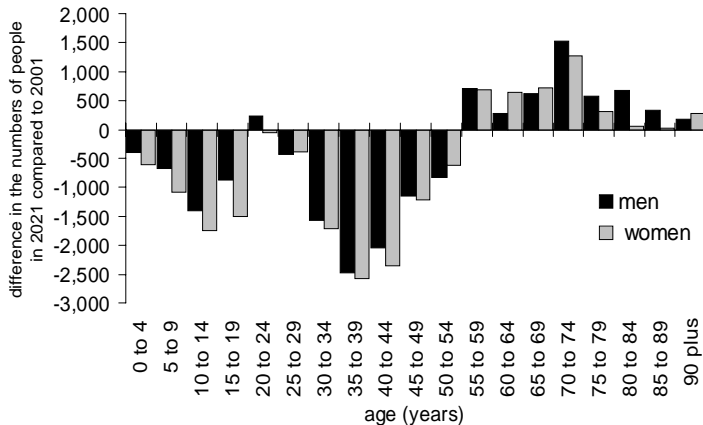
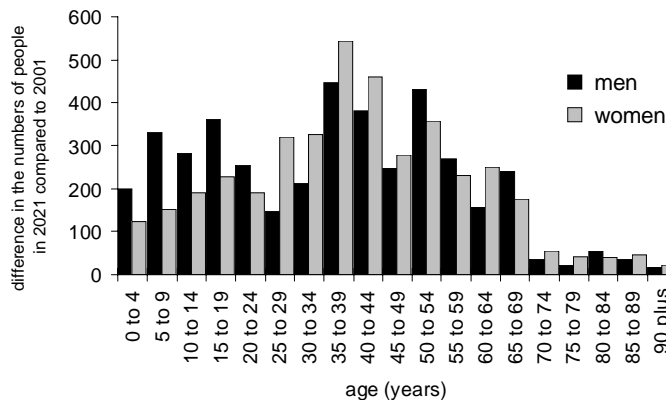


Figure 3: Overall change expected in the number of people in Oldham between 2001 and 2021- by age group and gender

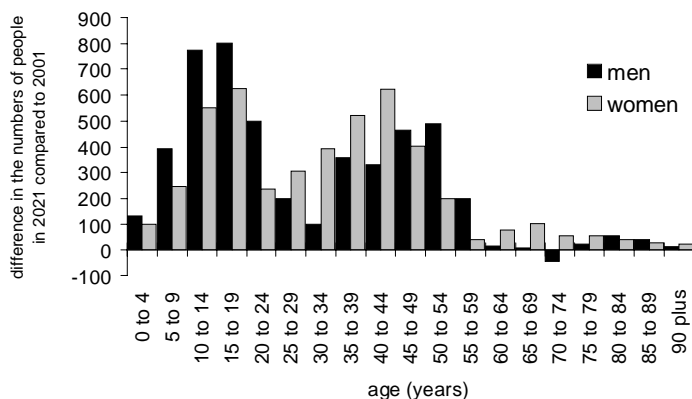
White people: Increasing numbers of older people and fewer people under 20 and 25 to 55 year olds



Pakistani people: Increasing numbers in all age groups, especially 35 to 44 year olds



Bangladeshi people: Generally increasing numbers, especially 5 to 24 year olds and 30 to 59 year olds



This document summarises expected population changes in the three largest ethnic groups in Oldham from 2001. Caution is required when using the forecasts for people in the Black and 'Other' ethnic groups because of changes in ethnic group classifications introduced in the 2001 Census. Since forecasts are less predictable over time, this document concentrates on change up to 2021.

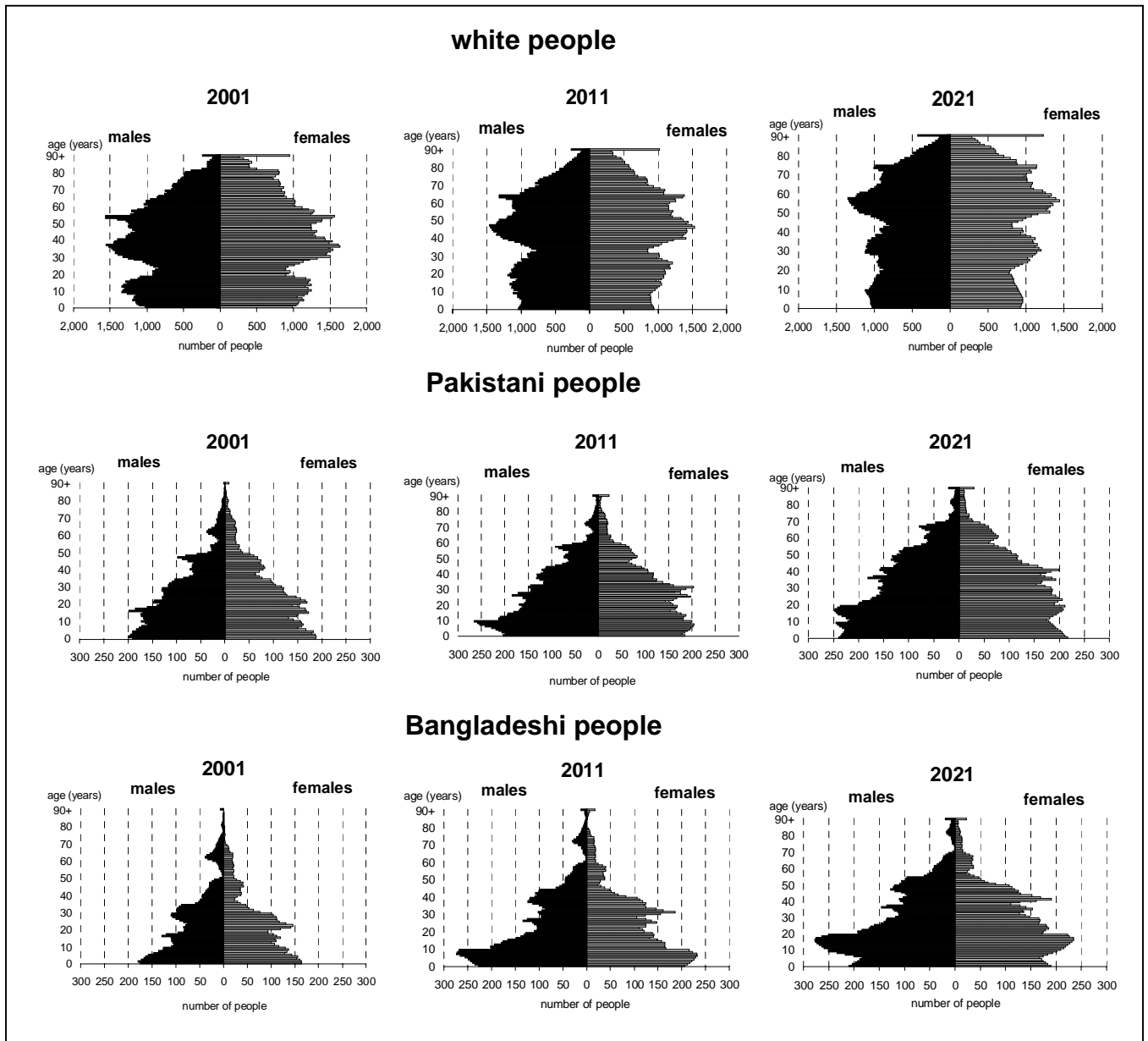
Greater ethnic diversity is expected in Oldham's population. In 2001, there were around 188,000 White people (86% of the total population). By 2021 there are expected to be around 22,600 fewer White people, with White people expected to make up 75% of the total population.

The number of people of Pakistani heritage is forecast to increase by around 10,300, increasing from 6.4% of the population in 2001 to 10.9% in 2021. The Bangladeshi heritage population is expected to increase by around 12,800 people between 2001 and 2021, rising from 4.5% to 10.3% of the Borough's population. Increased numbers of people in these two communities will largely result from an excess of births over deaths, rather than migration.

These population changes will not be uniform across age groups (Figure 3 and Tables 1-3). All three sub-populations are ageing (Figure 4). Significant changes expected between 2001 and 2021 include:

- Increasing numbers of older people. There will be about 18,000 people aged 75 years and over in 2021 (an increase of more than 3,000 people). The proportion of White people in this age group is expected to fall from 98.2% to 94.6%, with numbers increasing in both the Pakistani and Bangladeshi heritage communities.

Figure 4. Population Pyramids for 2001, 2011 and 2021 - all populations are ageing



Population pyramids show estimated numbers of males and females in Oldham by single years of age, except for the oldest people (aged 90 years and over). Note the different scale used for the white population compared to the Pakistani and Bangladeshi populations.

- Little change is expected in overall numbers of children aged under 16, but the proportion of these who are White is projected to fall from 76% to 61%. By 2021, there are expected to be about 8,700 fewer White children (aged under 16 years), 2,000 more Pakistani heritage children and 3,700 more Bangladeshi heritage children than in 2001.
- The total working age population in 2021 is expected to be 128,000. As compared with 2001, there are forecast to be about 4,100 fewer people of 'working age' (16 to 59/64 years). Within the working age population there are expected to be 21,000 fewer white people, 8,600 more people of Bangladeshi heritage and 7,300 more of Pakistani heritage.

Table 1. Number of people in Oldham in 2001

age (years)	estimated number of people in Oldham in 2001							% of total population in age group
	white	Pakistani	Bangladeshi	Indian	black	other	all groups	
0 to 4	10,900	1,900	1,700	100	<100	600	15,200	6.9
5 to 15	26,900	3,600	2,700	300	100	1,200	34,800	15.9
16 to 24	17,700	2,800	1,900	300	100	600	23,400	10.7
25 to 44	54,000	3,800	2,600	500	500	900	62,400	28.5
45 to 59f/64m	43,400	1,400	800	300	200	300	46,400	21.2
60f/65m to 74	20,700	400	300	100	200	400	21,800	10.0
75 and over	14,400	100	100	<100	<100	<100	14,700	6.7
all ages	188,100	13,900	9,900	1,600	1,300	3,800	218,500	100.0

Table 2. Number of people in Oldham in 2011

age (years)	estimated number of people in Oldham in 2011							% of total population in age group
	white	Pakistani	Bangladeshi	Indian	black	other	all groups	
0 to 4	9,300	2,100	2,500	100	<100	800	14,800	6.8
5 to 15	21,800	4,700	4,900	200	100	1,300	33,000	15.1
16 to 24	19,600	3,000	2,400	200	100	900	26,200	12.0
25 to 44	42,400	6,100	5,000	400	300	1,300	55,400	25.4
45 to 59f/64m	43,900	2,300	1,200	400	400	600	48,800	22.3
60f/65m to 74	24,000	500	500	100	100	100	25,400	11.6
75 and over	14,100	300	1200	<100	100	100	14,700	6.7
all ages	175,200	18,900	16,600	1,400	1,100	5,100	218,300	100.0

Table 3. Number of people in Oldham in 2021

age (years)	estimated number of people in Oldham in 2021							% of total population in age group
	white	Pakistani	Bangladeshi	Indian	black	other	all groups	
0 to 4	9,200	2,400	2,300	100	<100	1,200	15,200	6.8
5 to 15	20,000	5,000	5,800	100	100	1,900	32,900	14.8
16 to 24	15,400	4,000	4,300	100	100	900	24,700	11.2
25 to 44	38,000	7,700	6,600	300	200	1,800	54,600	24.6
45 to 59f/64m	40,700	3,600	2,900	300	400	800	48,700	22.0
60f/65m to 74	25,200	1,200	600	200	200	200	27,600	12.4
75 and over	17,000	400	300	100	100	100	18,000	8.1
all ages	165,500	24,200	22,800	1,200	1,000	6,900	221,600	100.0

'f' is female. 'm' is male. Estimated numbers of people in Tables 1, 2 and 3 are based on the estimates of numbers of people for single years of age. Each population estimate is independently rounded to the nearest 100 people. '<100' is fewer than 100 people. Percentages are based on unrounded figures.

This is one of a set of reports about these population forecasts for Oldham, including reports concerning a range of age groups. These reports are available on the 'Council Publications' section of the Oldham MBC website (at www.oldham.gov.uk).¹ The estimates and projections were produced by CCSR, University of Manchester, as described in their report: Simpson, L., and Gavalas, V. (27 May 2005) *Population forecasts for Oldham Borough, with an ethnic group dimension*. Further information can be obtained from the Research Team, Corporate Policy, Chief Executive's Department, Oldham Metropolitan Borough Council. Telephone: 0161 911 5186. E-mail susan.kirkham@oldham.gov.uk.