

# Population forecasts for Oldham

## The working-age population (men aged 16-64 years and women aged 16-59 years)

This document presents population forecasts for people of working-age (women aged 16 to 59 years and men aged 16 to 64 years) in Oldham by ethnic group to 2021. The estimates by ethnic group were produced by the University of Manchester.<sup>1</sup> Total populations are consistent with the mid-2003 based projections for Oldham prepared by the Office for National Statistics. Age structures by ethnic groups (for White, Pakistani, Bangladeshi, Indian, Black and 'Other' people) were based on the results of the 1991 and 2001 Censuses. All estimates and forecasts presented here have been rounded to the nearest 100

people. The results provide a guide to the possible future size and distribution of population by age, gender and ethnic group.

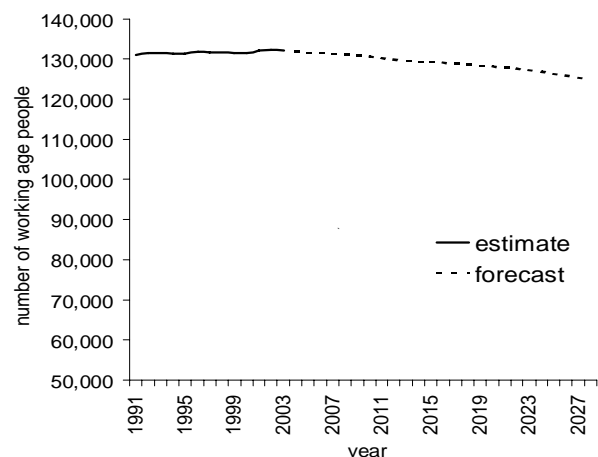
Since forecasts become less reliable over time, this document only considers changes up to 2021. It primarily concentrates on the total population and the three largest ethnic groups in Oldham: White people and people of Pakistani and Bangladeshi heritage. Caution is required when using the forecasts for Black people and people from 'Other' ethnic groups because of changes in ethnic group classification in the 2001 Census.

### Working age population

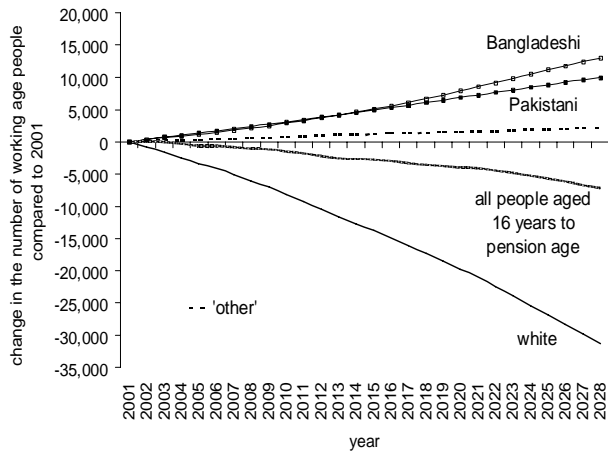
In 2005, Oldham's working-age population was estimated to be about 131,600 people – 60% of the total population of the Borough. Oldham's working-age population is expected to decrease annually to about 130,400 people by 2011 and 128,000 people by 2021 (Figure 1). This results in a fall of around 3% in the working-age population between 2001 and 2021. By 2021 the proportion of the total population who are of working age people is expected to decrease to 58% in 2021 (Table 1). The pattern of population change differs between ethnic groups (Figures 2, 3 and 4).

The Government's projections show a different pattern of change in the working-age population of England. Nationally, there were estimated to be about 31.2 million working-age people in 2005, accounting for about 62% of the total population. The working-age population is expected to increase annually to a maximum of about 32.2 million people in 2021. Then, the working-age population is expected to decrease annually to about 31.9 million people in 2028. From 2009, the proportion of the total population made up of working-age people is expected to decrease annually, falling to 60% in 2021.

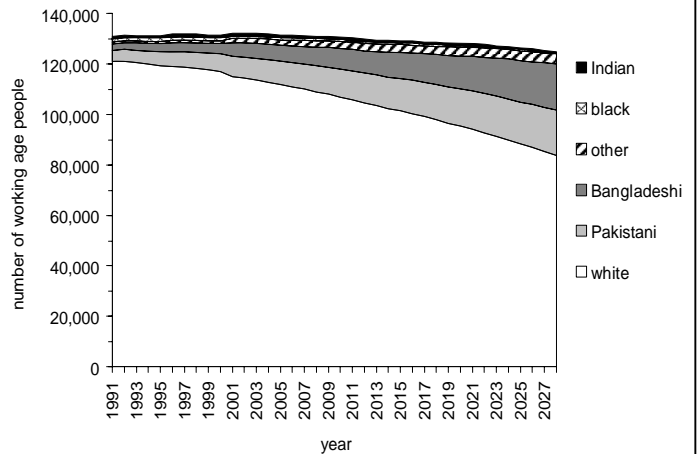
**Figure 1. The working-age population is projected to decrease annually from about 132,200 people in 2002 to about 125,100 people by 2028.**



**Figure 2. Numbers of white people are expected to decrease between 2001 and 2028 – while numbers of Bangladeshi and Pakistani people are expected to increase**

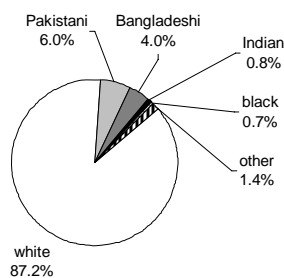


**Figure 3. Changing ethnic composition of the working-age population and, after 2002, decreasing numbers of working-age people**

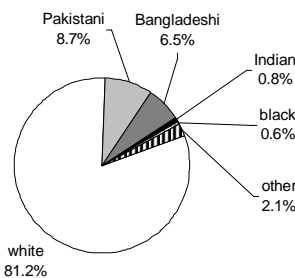


**Figure 4. Changing ethnic composition of Oldham's working-age population – comparison of this population in 2001, 2011 and 2021**

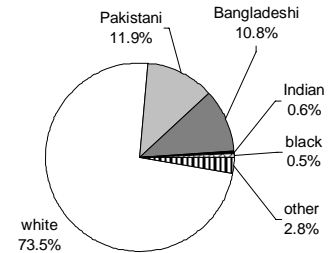
**132,100 working age people in 2001**



**130,400 working age people in 2011**



**128,000 working age people in 2021**



There were estimated to be about 115,200 White people of working age in Oldham in 2001. Their numbers are expected to decrease annually to 105,900 people in 2011 and 94,100 in 2021 (Figure 2). The proportion of the population of working age who are White will fall from about 87% in 2001 to 73.5% in 2021 (Figures 3 and 4).

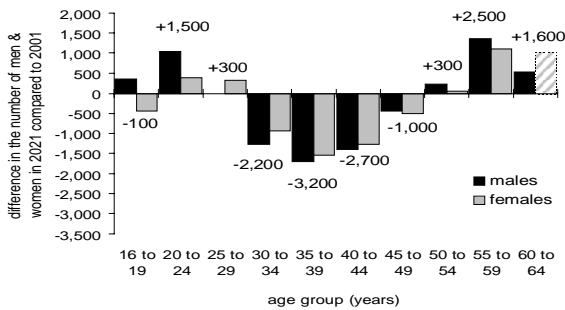
An estimated 6,950 people of Pakistani heritage in Oldham in 2001 were of working-age. Their numbers are projected to increase annually to around 11,000 people in 2011 and 14,800 people in 2021 (Figure 2). The proportion of the working age population of Pakistani heritage is projected to increase from around 6% in 2001 to 12% in 2021 (Figures 3 and 4).

There were around 5,200 Bangladeshi heritage people of working age in 2001. Numbers of working age Bangladeshi people are expected to increase year on year, reaching around 13,800 people in 2021. Between 2001 and 2021, Bangladeshi people are expected to make

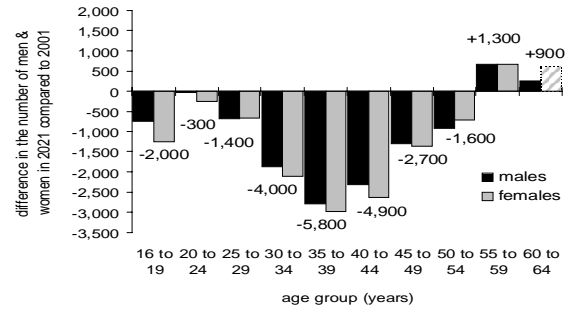
up a growing share of the working-age population of Oldham: about 4% in 2001 rising annually to about one in ten people (11%) in 2021 (Figures 3 and 4).

**Figure 5. Numbers of working-age people in 2021 compared to 2001 are expected to vary by age, gender and ethnic group**

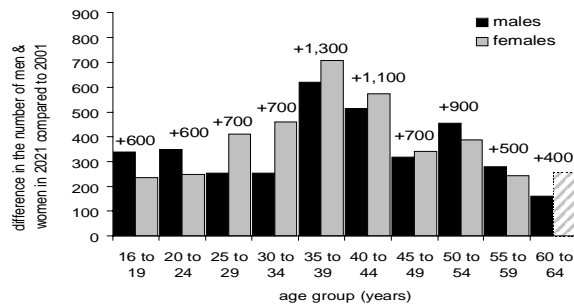
**all working age people ... fewer 30 to 44 year olds and more people aged 20 to 24 years and 55 years and over**



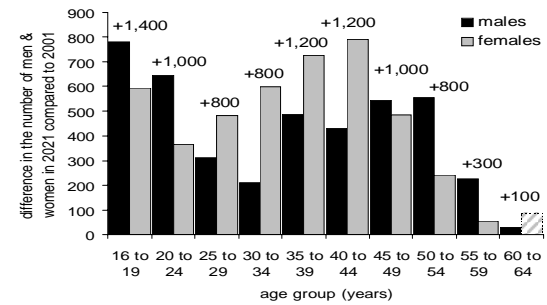
**White people ... markedly fewer people aged 30 to 44 years with the only increases among people aged 55 and over**



**Pakistani heritage people ... more people of all ages, especially 35 to 44 year olds**



**Bangladeshi heritage people ... more people of at all ages, especially people aged under 25 years and 35 to 44 years**



Numbers by bars are the difference in the number of people expected in 2021 compared to 2001. These numbers are rounded to the nearest 100. 'Working age' is 16 to 59 years for women and 16 to 64 years for men. Change in the number of men aged 60 to 64 years is expected to be 520 for all men, 250 for white men, 160 for Pakistani men and 30 for Bangladeshi men.

## Employment rates

Working-age employment rates vary by ethnic group, age, gender and location. The results of the Government's Annual Labour Force Survey 2002/03 showed that working-age White people in Oldham were about twice as likely to be employed as their Pakistani and Bangladeshi counterparts, with estimated employment rates of about 78.5% and 36.8% respectively. Women were less likely to be employed than men, with much lower employment rates among women of Pakistani and Bangladeshi heritage. In Greater Manchester less than one quarter (23%) of Pakistani and Bangladeshi women of working age were employed, as compared with 58% of men in these communities, 70% of White women and 77% of white men.

**Table 1. Working- age populations – their share of the total population within each ethnic group in selected years**

Ethnic group	Percentage of the total population in each ethnic group in Oldham made up of working-age people (women aged 16 to 59 years, men aged 16 to 64 years) in selected years:				
	2001	2006	2011	2016	2021
Black	69.9	70.1	72.8	71.4	65.3
Indian	69.0	70.3	70.2	67.5	60.9
White	61.2	61.4	60.5	58.9	56.9
Pakistani	56.9	58.2	60.0	61.6	62.6
Bangladeshi	52.7	50.8	51.6	55.1	60.6
Other	49.1	52.6	54.6	53.6	51.1
All	60.5	60.4	59.7	58.8	57.8

Based on single year forecasts. Rows are ordered by the percentage of the total population in the ethnic group accounted for by working age people in 2001.

**Table 2. Numbers of working-age people in Oldham in selected years**

Age (years)	Number (rounded to the nearest 100) of working-age people (women aged 16 to 59 years and men aged 16 to 64 years) in Oldham in selected years				
	2001	2006	2011	2016	2021
<b>People: all</b>	132,100	131,600	130,400	129,200	128,000
16 to 24	23,400	25,900	26,200	25,400	24,700
25 to 49	76,100	73,000	71,400	69,400	67,400
50 to 59/64	32,600	32,700	32,700	34,400	35,900
<b>White: all</b>	115,200	111,000	105,900	100,300	94,100
16 to 24	17,700	19,600	19,600	17,700	15,400
25 to 49	66,400	60,900	56,700	52,100	47,700
50 to 59/64	31,100	30,500	29,600	30,500	31,000
<b>Pakistani: all</b>	9,900	9,600	11,400	13,200	15,200
16 to 24	2,800	3,000	3,000	3,400	4,000
25 to 49	6,500	5,500	6,800	8,100	9,000
50 to 59/64	700	1,100	1,600	1,800	2,200
<b>Bangladeshi: all</b>	5,200	6,700	8,500	10,800	13,800
16 to 24	1,900	2,100	2,400	3,200	4,300
25 to 49	2,900	4,100	5,400	6,700	8,000
50 to 59/64	400	500	700	1,000	1,500

Note 1: Information about births, deaths and migration since 1991 were used to produce a set of population estimates to 2003. The population of the Borough was then projected forward to the year 2028, under a set of assumptions concerning likely future trends in births, deaths and migration.

This is one of a set of reports about these population forecasts for Oldham, including reports concerning a range of age groups. These reports are available on the 'Council Publications' section of the Oldham MBC website (at [www.oldham.gov.uk](http://www.oldham.gov.uk)). The estimates and forecasts were produced by CCSR, University of Manchester, as described in their report: Simpson, L., and Gavalas, V. (27 May 2005) *Population Forecasts for Oldham Borough, with an ethnic group dimension*. In addition, labour force projections for the Borough are being produced. Further information can be obtained from the Research Team, Corporate Policy, Chief Executive's Department, Oldham Metropolitan Borough Council. Telephone: 0161 911 5186. E-mail [susan.kirkham@oldham.gov.uk](mailto:susan.kirkham@oldham.gov.uk).