

Council Tax 2017-18

What you need to know

Greater Manchester Fire and Rescue Service (GMFRS) saves, protects and improves the lives of around 2.7 million residents, covering an area of almost 500 square miles.

The Service is funded partly by grants from Central Government and partly by council tax paid by the residents of Greater Manchester. It remains one of the lowest-cost and highest performing emergency services in the UK.

This year's council tax precept for GMFRS has risen by 1.99 per cent which is about 78p extra A YEAR for a Band A property. A household in Greater Manchester which pays Band A council tax rates contributes £39.96 a year to GMFRS – that's just 11p a day!

The money pays for your emergency response when you are in danger, as well as helping you prevent incidents from happening in the first place. In 2016, Greater Manchester Fire and Rescue Service:

- Raced to almost 11,000 fires – arriving within minutes of receiving a 999 call
- Attended more than 1,000 car crashes – carrying out rescues and administering trauma care at the scene in support of paramedics
- Rescued more than 1,500 people from a range of incidents including fires, car crashes and flooding
- Helped more than 3,000 people suffering a cardiac arrest to support paramedics in North West Ambulance Service

For every pound spent on GMFRS the Service delivers £18 of saving to the economy by saving lives, mitigating damage during emergencies and preventing fires from spreading.



**GREATER MANCHESTER
FIRE AND RESCUE SERVICE**

You can see what your council tax money helped to pay for last year in the infographic below.

Responded to
10,859
fires

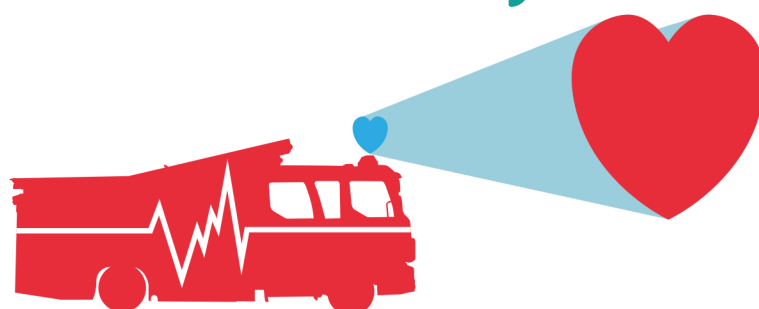


Working with
vulnerable residents
has saved the NHS
£851,738



Comparison of Expenditure and Income for 2016-17 and 2017-18:

Gross Expenditure	2016-17 £'000	2017-18 £'000
Employees	79,084	79,270
Other	26,798	26,792
Total	105,882	106,062
Less Income	-1,377	-1,412
Less Government Grant	-677	-690
Total	103,828	103,960
Capital Financing Charges	2,630	11,084
Less Asset Charges Reversal	-5,891	-5,938
Less Interest Received	-80	-30
Total	100,487	109,076
Contribution to (+) from (-) Balances/Reserves	-1,226	-11,587
Budget Requirement	99,261	97,489
Baseline Funding	-57,240	-53,056
Collection Fund Surplus (-) /Deficit (+)	-543	-1,077
Council Tax Requirement	41,478	43,356



Helped more than 3,000 people suffering a cardiac arrest in support of paramedics in North West Ambulance Service

259
young people involved in
Prince's Trust Teams and
Community Cadets



Why the budget Requirement has decreased

	£'000s
Inflation	890
Efficiencies	-2,385
Unavoidable Cost Pressures	1,580
Change in Capital Financing	8,454
Change in Interest on Balances	50
Change in use of Balances/Reserves	-10,361
Total Decrease in Budget Requirement	-1,772
Decrease in Funding	3,650
Total Increase in Council Tax Requirement	1,878

Why the Council Tax Requirement has Increased

	£'000s
Council Tax Requirement 2016/17	41,478
Taxbase increase of 15,276 properties	1,032
Band D increase of £1.17	846
Council Tax Requirement 2017/18	43,356

1,030
Road Traffic
Collisions



1,539
People rescued

